



Hurfords

Lingwood Park, Peterborough Freehold: £515,000

Key Features



- Detached 4-bedroom family home in a peaceful and private Longthorpe cul-de-sac
- Block-paved driveway and detached double garage, set well back from the road
- Beautiful front garden with shaped bushes and established planting
- Bright sitting room with patio doors opening onto the rear garden
- Separate dining room - ideal for formal occasions or everyday meals

Set back from the road, the property has its own private block-paved driveway, providing ample off-road parking and leading up to a detached double garage. The neatly manicured front garden is bordered with established shrubs and ornamental plants, creating a welcoming and elegant approach to the home.

Step inside to a bright and spacious entrance hallway that sets the tone for the rest of the property. The ground floor features a large sitting room, with patio doors that open directly onto the garden - perfect for indoor-outdoor living. A separate dining room provides a space ideal for entertaining or family gatherings. A separate study allowing extra space for working from home.

The heart of the home is the modern



kitchen/breakfast room, fully fitted with contemporary units, integrated appliances, and a bright dining area overlooking the garden. A separate utility room offers additional storage and has a side door leading outside - practical and convenient. Completing the ground floor is a convenient downstairs WC.

Upstairs, you'll find four well-proportioned bedrooms, including a generous master suite complete with en-suite shower room. The remaining three bedrooms are served by a modern family bathroom, finished to a high standard.

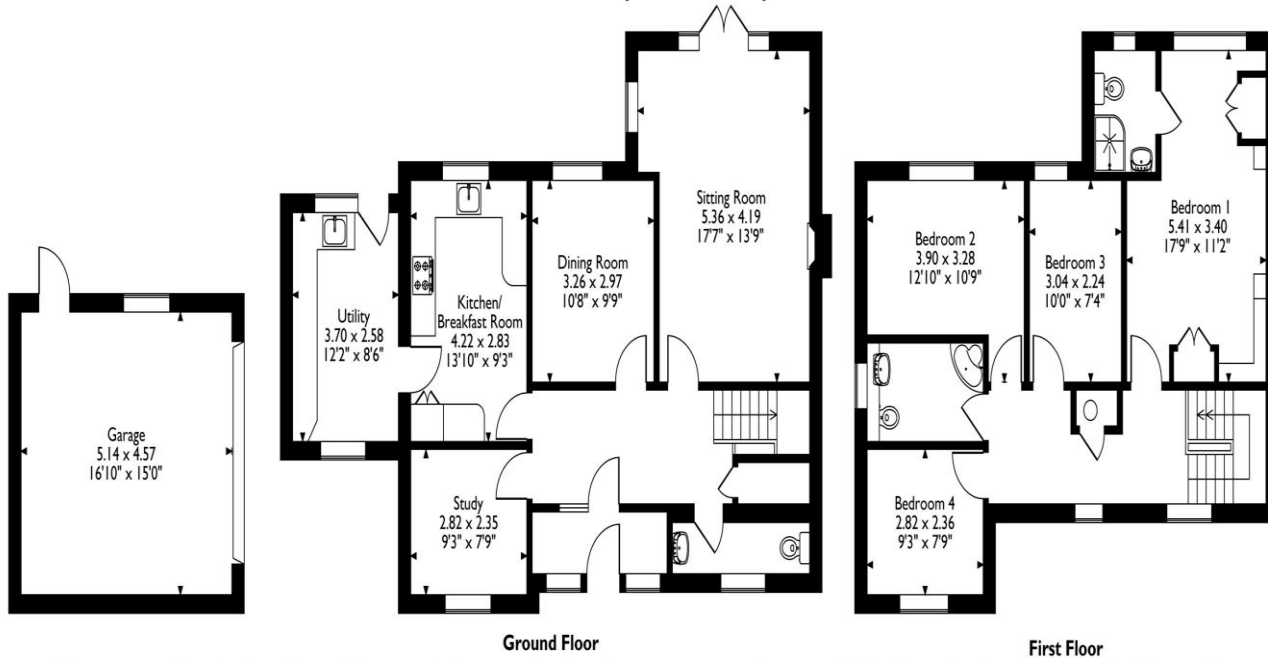
To the rear, the home opens out to a beautiful garden - fully enclosed for privacy and security. The space has been carefully designed for both relaxation and entertaining, featuring a large paved patio area ideal for seating or al fresco dining, lawns edged with manicured borders, and mature shrubs providing year-round colour and interest.

Located in the desirable area of Longthorpe, this home is just a short distance from local shops, parks, schools, and excellent transport links into Peterborough city centre and beyond. It offers the perfect blend of quiet suburban living and practical convenience.



A rare opportunity - early viewing is highly recommended.

Lingwood Park, Peterborough
Approximate Gross Internal Area
Main House = 146 Sq M/1572 Sq Ft
Garage = 23 Sq M/248 Sq Ft
Total = 169 Sq M/1820 Sq Ft



Please note that the location of doors, windows and other items are approximate and this floorplan is to be used for illustrative purposes only. Unauthorized reproduction is prohibited.

Selling your property?

Contact us to arrange a FREE home valuation.

 01733 380956

 Unit 5, The Barns Milton Lane, Castor, PETERBOROUGH, Cambridgeshire , PE5 7DH

 info@hurfords.co.uk

 www.hurfords.co.uk



 SCAN ME



Hurfords is a trading name of Sharman Quinney Holdings Limited which is registered in England and Wales under company number 4174227, Registered Office is Cumbria House, 16-20 Hockliffe Street, Leighton Buzzard, Bedfordshire, LU7 1GN. VAT Registration Number is 500 2481 05.

1: These particulars do not constitute part or all of an offer or contract. 2: The measurements indicated are supplied for guidance only and as such must be considered incorrect. 3: Potential buyers are advised to recheck the measurements before committing to any expense. 4: Hurfords has not tested any apparatus, equipment, fixtures, fittings or services and it is the buyers interests to check the working condition of any appliances. 5: Hurfords has not sought to verify the legal title of the property and buyers must obtain verification from their legal representative. 6: Intending purchasers will be asked to produce identification documentation at a later stage and we would ask your co-operation in order that there will be no delay in agreeing the sale. Ref: HUC104226 - 0002

