



Worple Road, SW19

£550,000

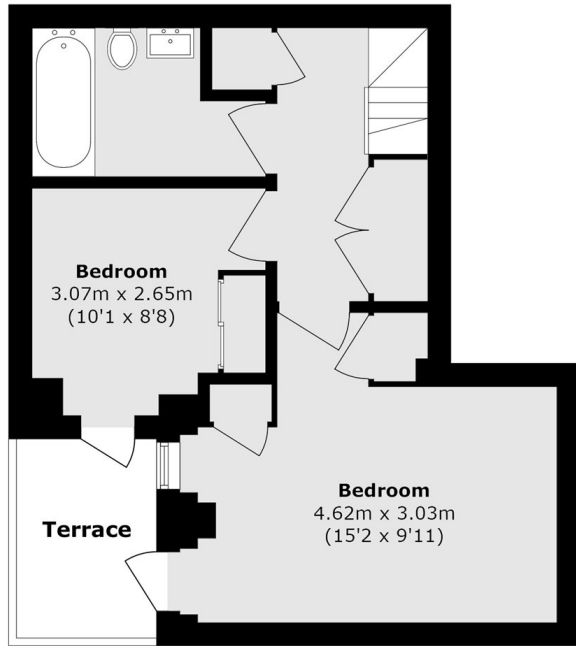
A two double bedroom, split level, new build apartment, complete with a private courtyard garden accessible from both bedrooms and no onward chain.

Located just a short distance from central Wimbledon with the district line tube, overground train and tram line, as well as exclusive shops, restaurants, pubs and bars.

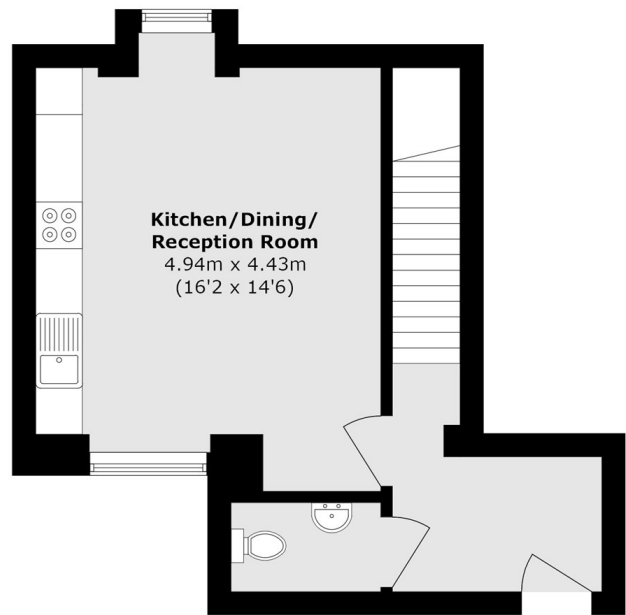
Features

- Bedroom Garden Access
- Split Level
- Two Double Bedrooms
- Private Courtyard Garden
- New Build Development
- Duplex Apartment

Worple Road, London, SW19



Lower Ground Floor



Ground Floor

Total area (approx.): 74.5 sq. m (801.9 sq. ft)
Terrace area (approx.): 4.7 sq. m (50.5 sq. ft)