

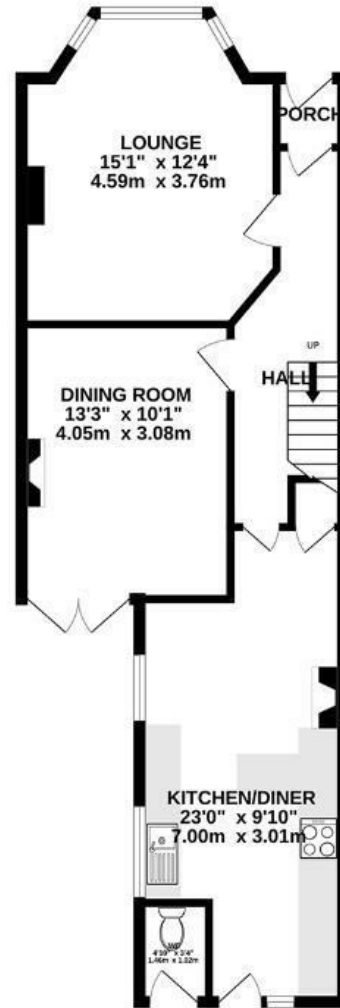
# Brynland Avenue

BISHOPSTON

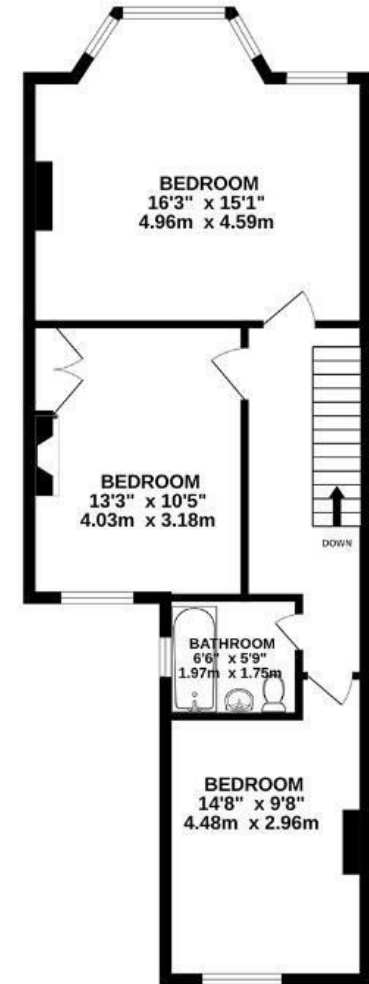
APPROXIMATE FLOOR AREA  
111.6 SQM / 1202 SQFT



GROUND FLOOR



FIRST FLOOR



Boardwalk

# Brynland Avenue

BISHOPSTON, BRISTOL



£550,000



3 Bedrooms



BS7 9DY



1 Bathrooms

*"Being so close to Gloucester Road growing up was a dream! We were very spoilt having everything on our doorstep. We also love the private garden, which gets lots of sun."*

