



Luscombe Maye

Since 1873

Sheplegh Court, Blackawton

Guide Price £295,000

3 2 1



DESCRIPTION

Luscombe Maye is delighted to bring to market this charming three bedroom terraced cottage, situated in the private grounds of Sheplegh Court, which was a former Monastery. This tranquil location is surrounded by its own landscaped and managed communal grounds and benefitted from the use of a hard surface tennis court and a heated outdoor pool. In addition to this there is a communal laundry room, an indoor heated swimming pool, sauna and snooker room.

Entering the property there is a spacious entrance hall fitted with ample storage space and a convenient downstairs WC. The living/ dining area is a notable size, flooded with plentiful natural light from the large window and sliding doors, creating an inviting and comforting place for relaxation or entertaining. Just off to the side is the kitchen area, fitted with matching floor to ceiling units, integrated appliances and ample work surface space. Leading down to the rear of the property, there is a double bedroom, with ample light from the window facing into the sunny courtyard.

Ascending the stairs there is another double bedroom, served by the well-proportioned family bathroom, fitted with a bath with shower above, WC and hand basin. The master bedroom is a generous size paired with a fitted storage and a spacious en-suite shower room.

At the heart of the property there is a beautiful courtyard, perfect for relaxing in the sun, outdoor dining or hosting. The front of the property has a lawned area built up with trees and mature shrubs, as well as flowered beds.

This property has an allocated parking space within the residents car park with visitor parking available.

DIRECTIONS

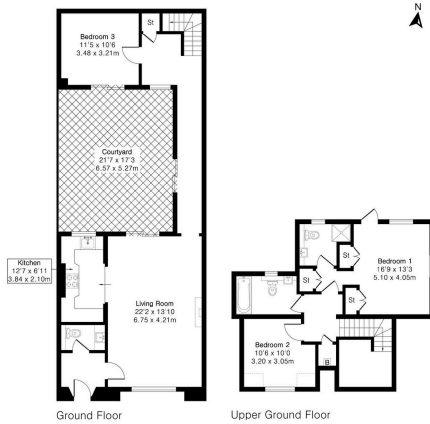
What3Words - [bakers.repayment.providing](https://www.what3words.com/)



Approximate Gross Internal Area 1283 sq ft - 119 sq m

Ground Floor Area 756 sq ft - 70 sq m

Upper Ground Floor Area 527 sq ft - 49 sq m



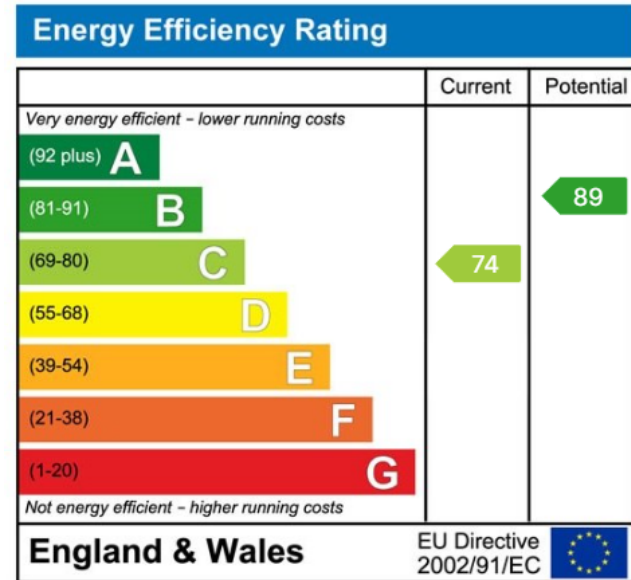
- Charming Terraced Cottage
- Private Courtyard Garden
- No Forward Chain
- Allocated Parking Space
- Master With En-Suite
- Three Double Bedrooms
- Set In Private Grounds
- Benefitted From Amenities at Sheplegh Court
- Open Plan Layout



Floor plan produced in accordance with RICS Property Measurement 2nd Edition. Although Pink Plan Ltd ensures the highest level of accuracy, measurements of doors, windows and rooms are approximate and no responsibility is taken for error, omission or misstatement. These plans are for representation purposes only and no guarantee is given on the total square footage of the property within this plan. The figure shown is for initial guidance only and should not be relied on as a basis of valuation.



Use the QR code for further "Material Information" about this home



Totnes:
59 Fore Street, Totnes TQ9 5NJ
01803 869920
totnes@luscombemaye.com
www.luscombemaye.com