

[www.jeffreygross.co.uk](http://www.jeffreygross.co.uk)

CARDIFF

VALE

CAERPHILLY

BRISTOL



*Clos Dewi Sant*

CANTON





Comments by Mrs Ruby Ledley



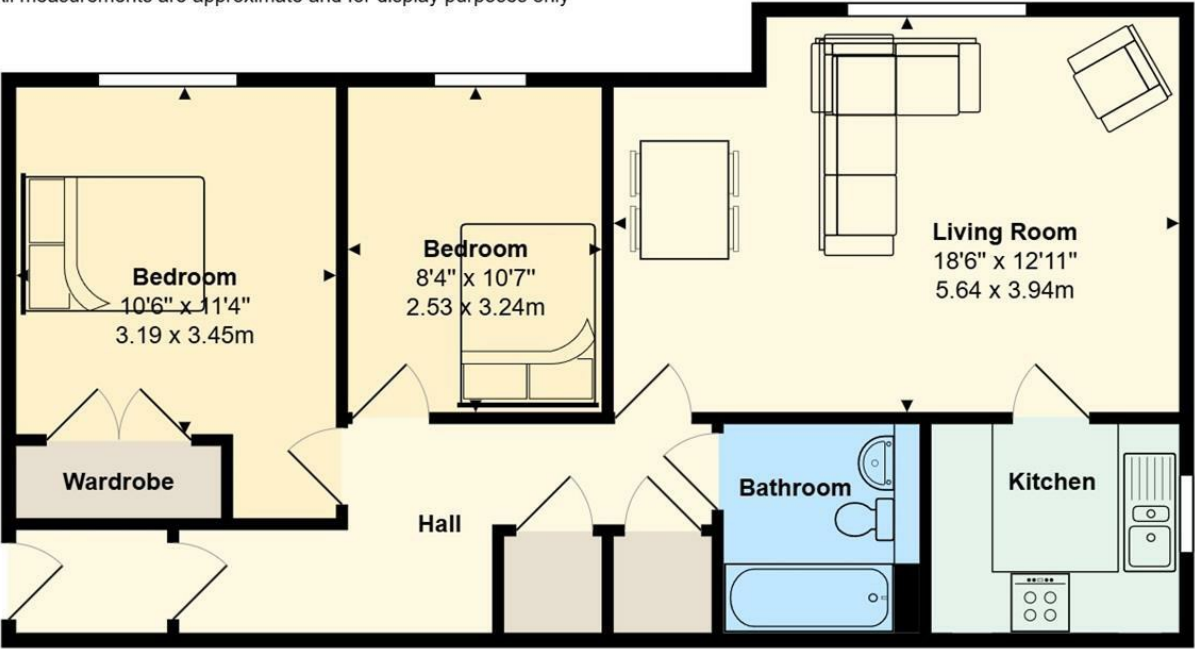
**Property Specialist**  
**Mrs Ruby Ledley**  
Valuer

02920 499 680  
ruby@jeffreygross.co.uk

Clos Dewi Sant

Total Area: 709 ft² ... 65.9 m²

All measurements are approximate and for display purposes only



Comments by the Homeowner





# Clos Dewi Sant

*Canton, Canton, CF11 9EW*

Guide Price

**£210,000**



2 Bedroom(s)



1 Bathroom(s)



710.42 sq ft



Contact our  
***Pontcanna Branch***

02920 499680

Chain Free. A spacious ground floor apartment, located on this popular development within just a short walk of Bute park, Pontcanna & Cardiff Central Railway station, and all the attractions of the city centre.

Constructed in 2003, this property benefits from modern amenities and a well-maintained environment, allowing for a hassle-free lifestyle.

The property briefly comprises entrance hallway, two double bedrooms, a large bright living / dining room, separate modern fitted kitchen with built-in appliances and a family bathroom. The Property further benefits one allocated parking space and visitors spaces.

This would make an ideal investment or first time purchase. Whether you are looking to invest in your first home or seeking a rental opportunity in a lively area, this flat presents an excellent option. With its combination of space, comfort, and a prime location, Clos Dewi Sant is a property not to be missed.





Hallway	Ground Rent
Living Room 18'6 x 12'11 (5.64m x 3.94m)	£0
Kitchen	
Bathroom	
Bedroom 1 10'6 x 11'4 (3.20m x 3.45m)	
Bedroom 2 8'4 x 10'7 (2.54m x 3.23m)	
Storage Cupboards	
Tenure	
Leasehold 126 years remaining.	
Council Tax	
BAND E	
EPC	
RATING	
Service Charge	
Annual service charge £1849.71	







Energy Efficiency Rating		
	Current	Potential
Very energy efficient - lower running costs		
(92 plus) A		
(81-91) B		
(69-80) C	79	80
(55-68) D		
(39-54) E		
(21-38) F		
(1-20) G		
Not energy efficient - higher running costs		
England & Wales		EU Directive 2002/91/EC

