



## BOYDELL COURT

ST JOHNS WOOD, NW8

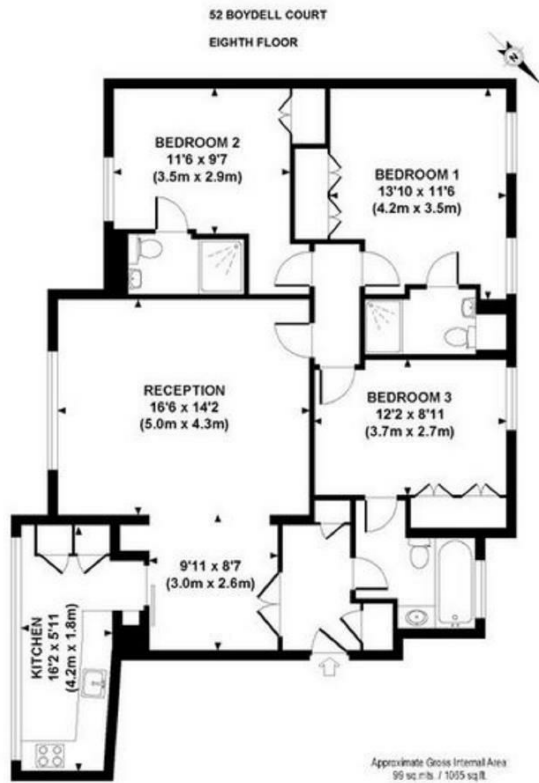
£1,300 PER WEEK

Stunning and large 3 bedroom apartment situated in Boydell Court, a fabulously located purpose built block in the centre of St Johns Wood. The flat boasts spacious reception room, fully fitted kitchen fitted with integrated appliances, 3 bedrooms and 3 bathrooms (2 en-suite).

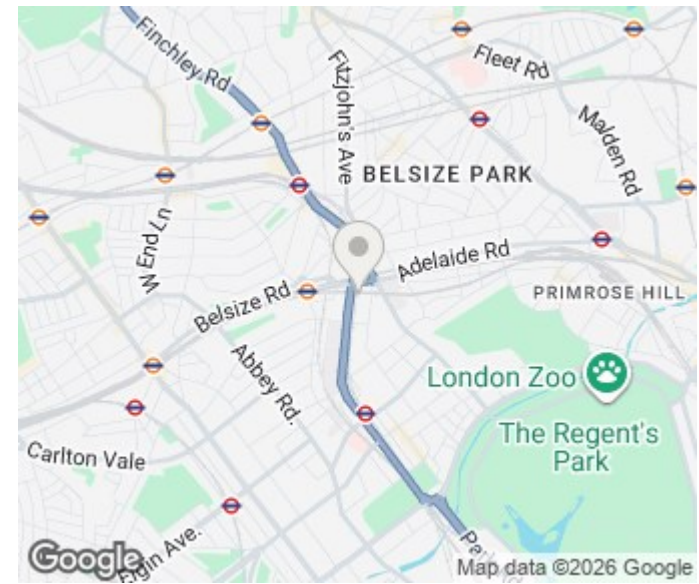
#### Features

- 24 Hour porter
- Fully air conditioned
- Bespoke interior design

**PMP** | INTERNATIONAL



Although every attempt has been made to ensure accuracy, all measurements are approximate.  
The floor plan is for illustrative purposes only and not to scale. Measured in accordance to RICS standards.  
DE-PHOTOGRAPHY.NET



Energy Efficiency Rating		
	Current	Potential
Very energy efficient - lower running costs		
(92 plus) <b>A</b>		
(81-91) <b>B</b>		
(69-80) <b>C</b>		
(55-68) <b>D</b>		
(39-54) <b>E</b>		
(21-38) <b>F</b>		
(1-20) <b>G</b>	<b>1</b>	<b>1</b>
Not energy efficient - higher running costs		
<b>England &amp; Wales</b>	EU Directive 2002/91/EC	

Agents Note: Whilst every care has been taken to prepare these particulars, they are for guidance purposes only. All measurements are approximate and are for general guidance purposes only and whilst every care has been taken to ensure their accuracy, they should not be relied upon and potential buyers/tenants are advised to recheck the measurements

London  
PMP International  
94 Belsize Lane  
Belsize Park  
London  
NW3 5BE

020 7701 2878  
info@pmpi.co.uk  
www.pmpi.co.uk

**PMP** | INTERNATIONAL