



**Pomfret Road, Loughborough Junction, SE5**

2 bedroom flat - conversion for sale

**£415,000**

Share of Freehold

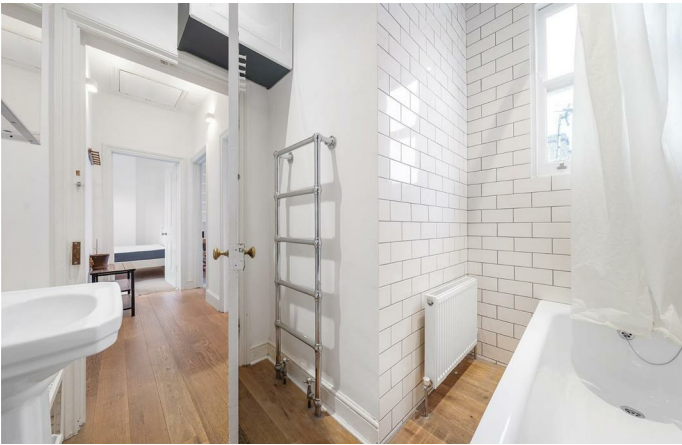
## Property Details

A bright two-bedroom apartment set within a handsome Victorian townhouse, this home combines period charm with modern living. The open-plan reception is the heart of the apartment, with large sash windows flooding the room with natural light and offering serene leafy street views. The kitchen runs along one wall, providing a sleek and functional workspace while leaving ample room for dining and entertaining, ideal for hosting friends or enjoying a quiet meal at home. Both bedrooms are generous, with the principal bedroom quietly positioned at the rear and featuring a charming fireplace, while the second bedroom includes a built-in wardrobe for practical storage. The bathroom is elegantly finished with a shower over the bath, classic subway tiles, and a window for ventilation. Impressive high ceilings throughout enhance the sense of space and light, and loft access from the hallway provides excellent additional storage.

## Features

- Two bedrooms
- Victorian conversion
- Bright and airy
- Loft access for storage
- Ruskin Park an eight-minute walk
- Two-minute walk to the station
- Central Brixton a twelve minute stroll
- Share of freehold
- Chain-free

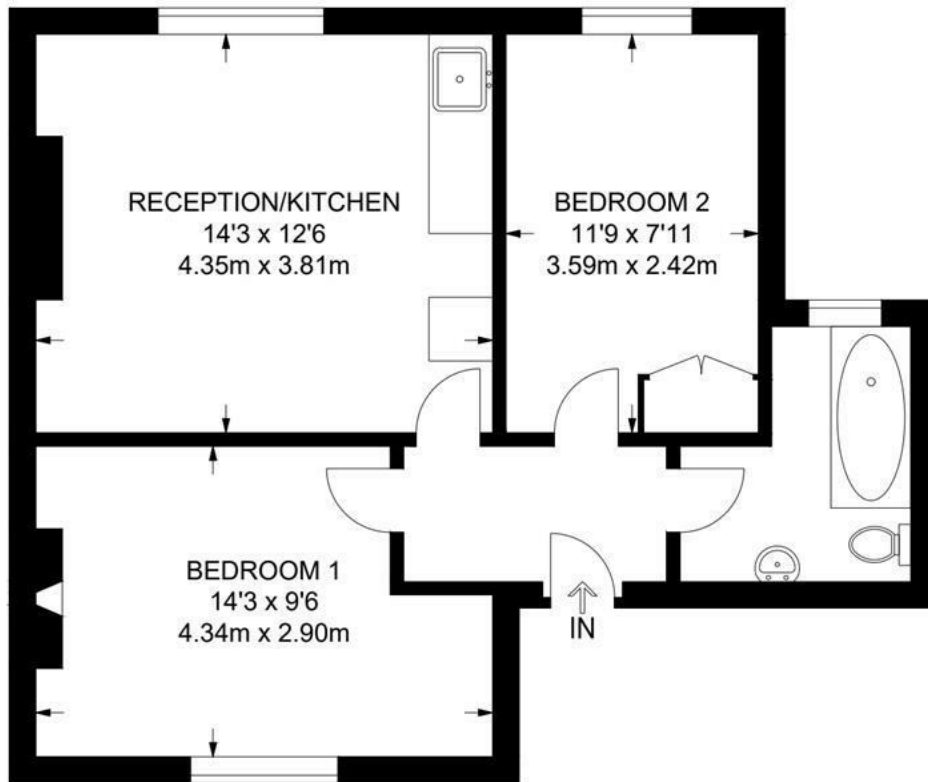
Council tax band C    EPC rating C (69)



Pomfret Road, Loughborough Junction, SE5

**Pomfret Road, SE5**  
**2 Bedroom Flat**

APPROXIMATE GROSS INTERNAL AREA: **495 SQ FT / 46 SQ M**



**FIRST FLOOR**



While we try our very best, floor plans are produced as a guide only and we take no responsibility for the precise accuracy with which any property is represented.

Pomfret Road, Loughborough Junction, SE5

