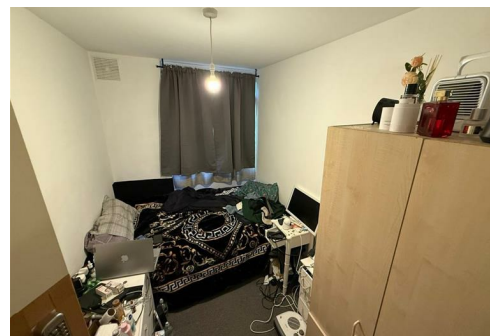
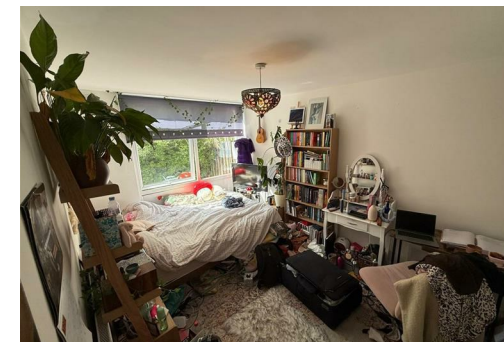




T₂m

5 Yelverton Road £3,900 PCM

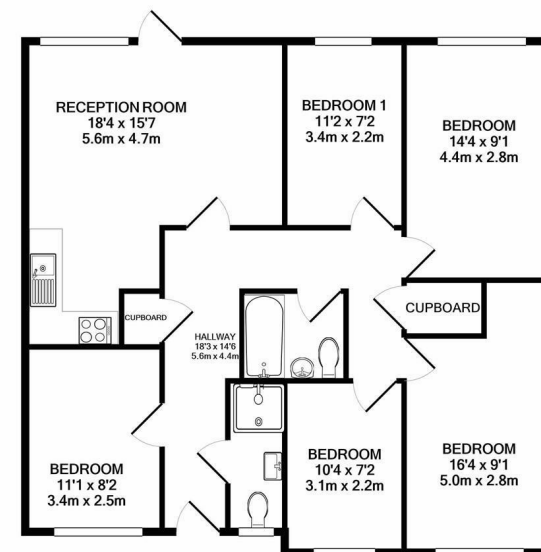


Contact
02086400146
admin@time2move.com
www.time2move.com

Local Authority
Wandsworth Borough Council

Council Tax Band C

EPC Rating



BADRIC COURT, YELVERTON ROAD, BATTERSEA, SW11
TOTAL APPROX. FLOOR AREA 955 SQ. FT. (88.7 SQ. M.)
Whilst every attempt has been made to ensure the accuracy of the floor plan contained here, measurements of doors, windows, rooms and any other items are approximate and no responsibility is taken for any error, omission, or mis-statement. This plan is for illustrative purposes only and should be used as such by any prospective purchaser. The services, systems and appliances shown have not been tested and no guarantee as to their operability or efficiency can be given
Made with Metropix ©2020