



Living
made
better

Grantham House
London City Island, E14 0LW



Price Guide £400,000

Grantham House, London City Island, E14 0LW

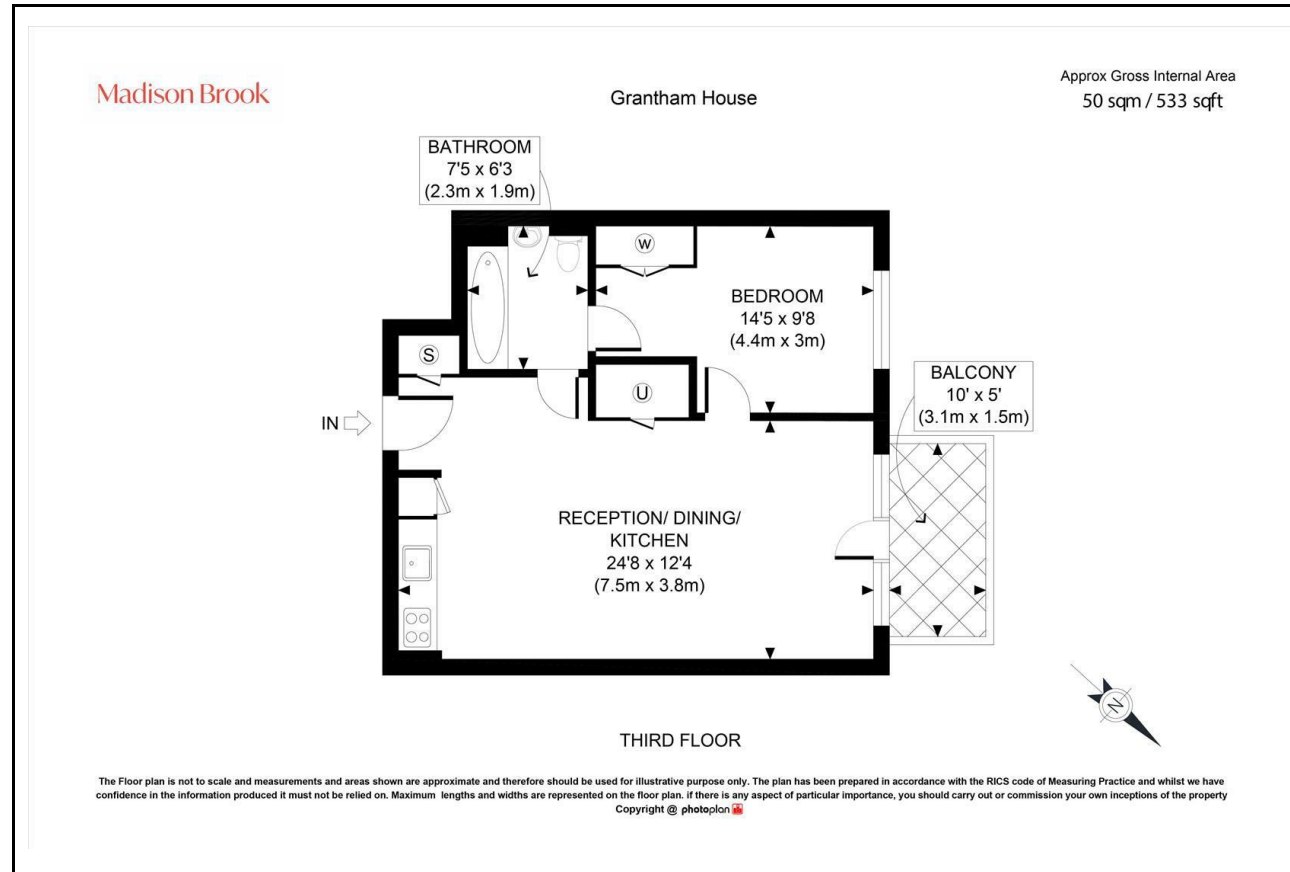
Madison Brook

Property Summary

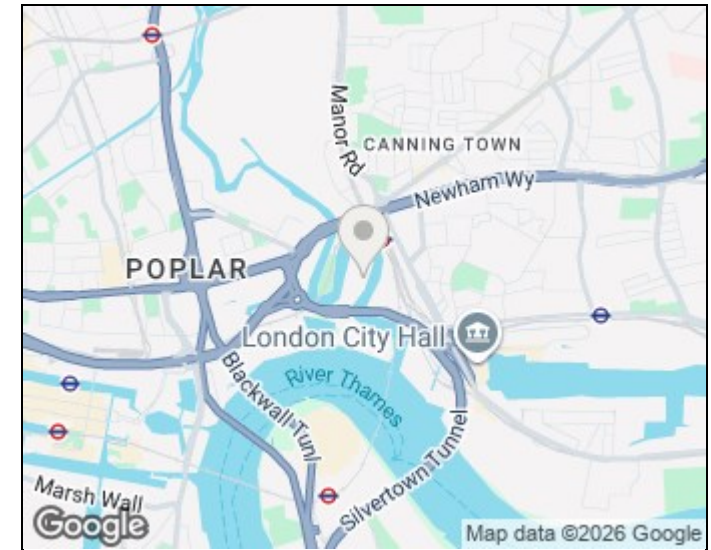
Beautifully presented one-bedroom apartment on the 3rd floor of London City Island. Features a bright open-plan living space with integrated kitchen appliances, a generous double bedroom with built-in wardrobe, and a stylish three-piece bathroom. A private balcony overlooks landscaped communal gardens.

Residents enjoy a 24-hour concierge, gym, pool, spa, and access to Goodluck Hope amenities. Just moments from Canning Town Station for quick links to Canary Wharf and The City.

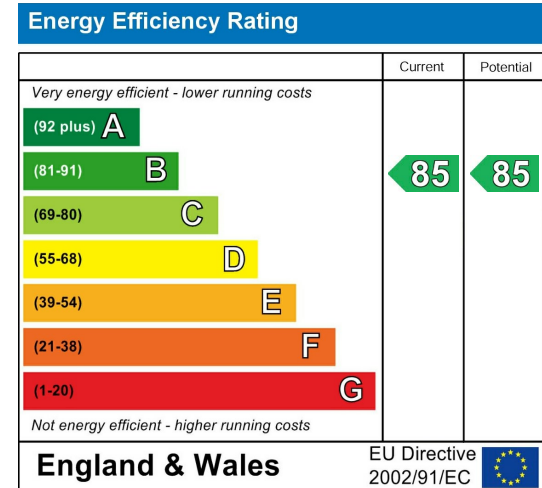
Floorplan



Area Map



Energy Efficiency Graph



These particulars, whilst believed to be accurate are set out as a general outline only for guidance and do not constitute any part of an offer or contract. Intending purchasers should not rely on them as statements of representation of fact, but must satisfy themselves by inspection or otherwise as to their accuracy. No person in this firm's employment has the authority to make or give any representation or warranty in respect of the property.

Unit B 20 Western Gateway, Royal Victoria
Dock, London, E16 1BS
Tel: 020 3946 6000 Email:
docklands@madisonbrook.com
<https://madisonbrook.com/>