

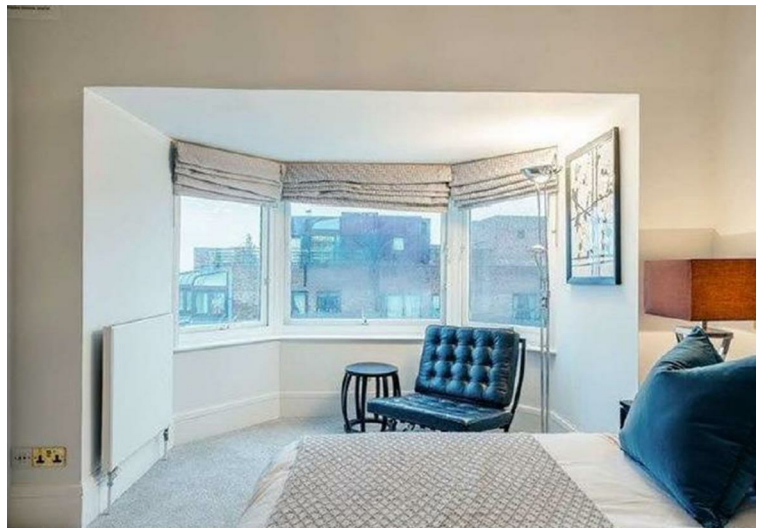


Park Road, St Johns Wood, NW8 £9,815 Per Month Furnished/unfurnished

Greenstone are pleased to offer this stunning four bedroom penthouse apartment located in a prestigious mansion block offering fabulous views over Regents Park.

The penthouse is set over 2135 sq ft and comprises a large dual aspect reception/dining room benefiting from a south facing private balcony with magnificent views over Regents Park, master bedroom with a dressing room and en-suite bathroom with a Jacuzzi allowing stunning views over Regents Park, three further bedrooms with en-suite bathrooms, kitchen, guest bathroom and cloakroom.

The apartment offers easy access to the famous Lords Cricket Ground, the open spaces of Regent's Park, along with all the local shops, bars, restaurants located on St John's Wood High Street.



**STRATHMORE COURT
PARK ROAD NW8**

APPROX. GROSS INTERNAL AREA *
2135 Ft² - 198.34 M²

Illustration For Identification Only, Not to Scale
All Calculations include Any/All Areas Under 1.5m Head Height.
* As Defined by RICS - Code of Measuring Practice



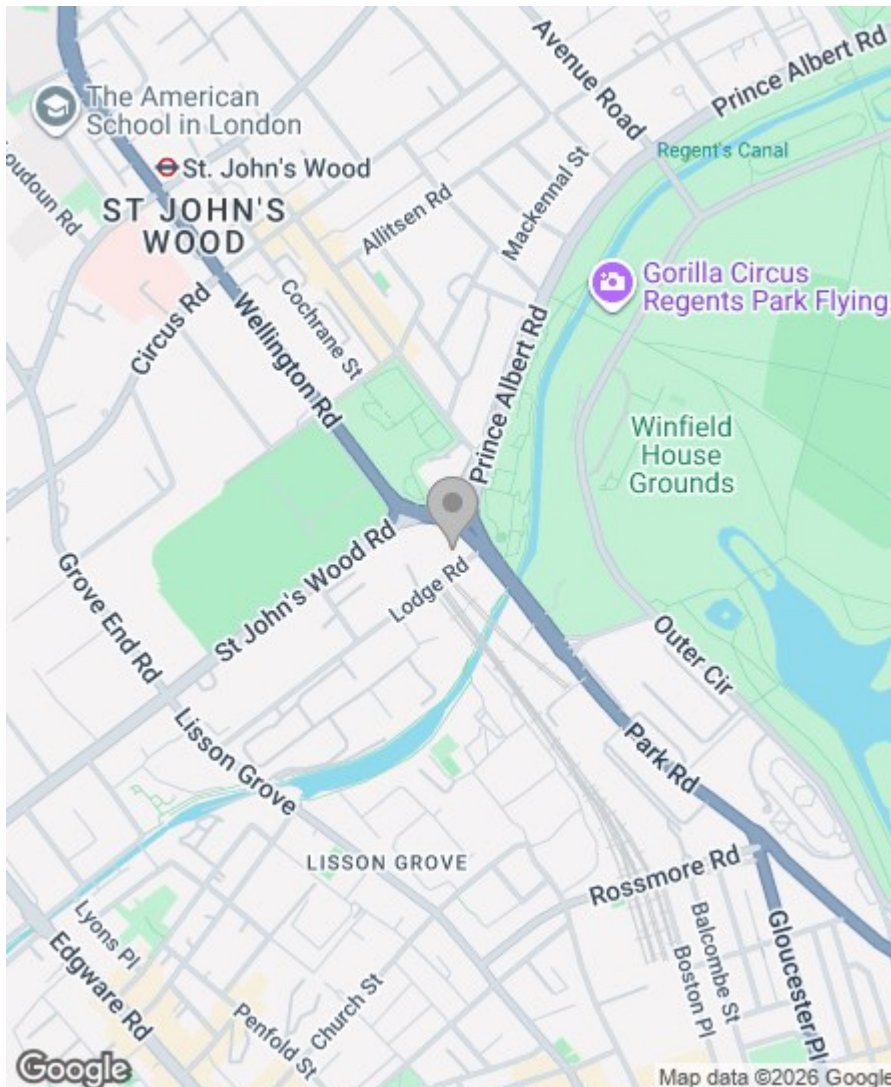
SIXTH FLOOR

Property Overview


Location	St Johns Wood, NW8
Price	£9,815 Per Month
Bedrooms	4
Bathrooms	5
Receptions	1
Council	
Tax Band	
Furnishing	Furnished/unfurnished

Key Features

- Private Balcony
- Views of Regents Park
- Porter
- Lift
- 24 Hour CCTV
- Video Entry
- Close to transport Links
- Close to Shops



Energy Efficiency Rating

	Current	Potential
<i>Very energy efficient - lower running costs</i>		
(92 plus) A		
(81-91) B		
(69-80) C		73
(55-68) D		
(39-54) E	51	
(21-38) F		
(1-20) G		
<i>Not energy efficient - higher running costs</i>		
England & Wales	EU Directive 2002/91/EC 	

Greenstones Estates Ltd
Registered in England & Wales
Registered Office:
5 West Court, Enterprise Road,
Maidstone, Kent ME15 6JD

Company Registered number
03513585

Trading address
83 Boundary Road, St John's Wood,
London NW8 0RG

We are members of



IMPORTANT NOTICE: All of the information is intended only as a guide to a prospective purchaser and does not constitute any part of an offer or contract. Any measurements or distances referred to herein are approximate only. Any information contained herein (whether in the text, plans or photographs) is given in good faith and cannot be relied upon as being a statement or representation of fact. Should you proceed with the purchase of the property, your solicitor must verify these details. We have not carried out a detailed survey nor tested the services, appliances and specific fittings. In accordance with current legislation we would advise you that the measurements on these particulars are imperial. The formula for conversion to metric is as follows:- 1' (one foot) = 30.4cm (centimetres), 1m (one metre) = 3'29 (feet).

