

Lyham Road, Brixton, SW2

2 bedroom flat for sale

£850,000

Share of Freehold

Property Details

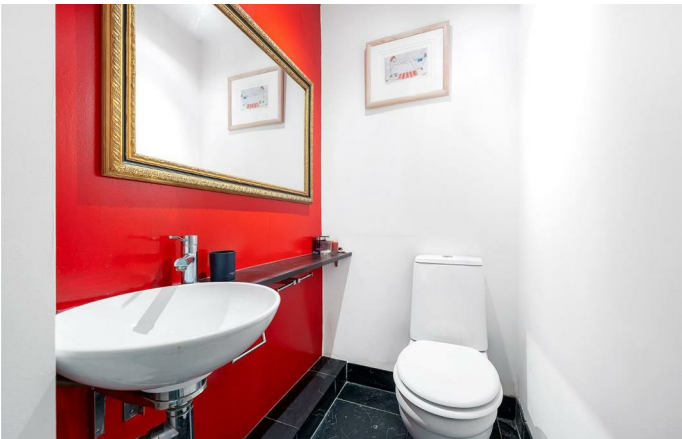
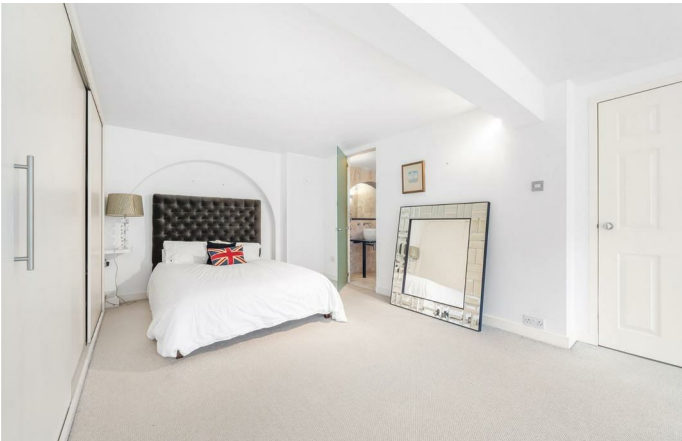
An exceptional two-bedroom split-level flat with a private entrance, designated parking, and demised outside space. Set within the grand Victorian school conversion of Park Lofts, this distinctive home forms part of a securely gated development with manicured communal grounds, allocated off-street parking, and CCTV security. Ideally positioned between Clapham and Brixton, a short stroll to Abbeville Village with multiple schools on the doorstep. Vast South-facing windows flood the home with light, complementing striking architectural features and stylish modern finishes. The spacious ground-floor reception room spans twenty feet, enhanced by wooden floors, a feature staircase, and glass detailing. Upstairs, two generous bedrooms each enjoy luxurious en-suite bathrooms. The final floor hosts an impressive open-plan kitchen and reception, with French doors to the outdoors, underfloor heating, and an electric fireplace, creating a truly exceptional home of space, style, and comfort. The split-level design situates this second social space well away from the bedrooms two floors up, ideal for those who like to entertain.

Features

- Two double bedrooms
- Two bathrooms and a cloakroom
- Demised outside space
- Gated Victorian school conversion
- Own private entrance
- Over 1740 square feet, split over three floors
- Allocated off-street parking space
- Access to the Victoria and Northern tube lines
- Walking distance to Brixton and Clapham High Streets
- Share of freehold. Chain-free

Council tax band E EPC rating C (72)





Lyham Road, Brixton, SW2

Lyham Road, SW2
2 Bedroom Flat

APPROXIMATE GROSS INTERNAL AREA: **1746 SQ FT / 162 SQ M**



While we try our very best, floor plans are produced as a guide only and we take no responsibility for the precise accuracy with which any property is represented.

Lyham Road, Brixton, SW2

