



**Blackbird Cottages Stortford Road, Hatfield Heath Bishop's
Stortford CM22 7DU**



welcome to

Blackbird Cottages Stortford Road, Hatfield Heath Bishop's Stortford

Nestled in the highly sought-after village of Hatfield Heath, this delightful detached chalet bungalow offers a peaceful rural retreat while remaining conveniently located for commuting to Bishop's Stortford, Stansted Airport, and beyond.



- Accommodation Overview -

Lounge

Three windows to the front aspect and window to the side aspect. Double doors to the rear, radiator and carpet.

Kitchen

Window to side aspect, window to rear aspect, spotlights, fitted wall and base units with work surfaces over, integrated oven, washing machine and fridge/freezer. Space for dish washer and radiator.

Landing

Skylight window and storage cupboard.

Bedroom 1

Window to front aspect, radiator and carpet.

Bedroom 2

Window to front aspect, radiator and carpet.

Bathroom

Skylight, window to rear aspect, pedestal wash basin, wc and shower cubicle.

- Exterior -

Parking

Allocated parking for 2 cars.

Rear Garden

Low maintenance garden with astroturf lawn, patio area and side access.



view this property online williamhbrown.co.uk/Property/HLO105506

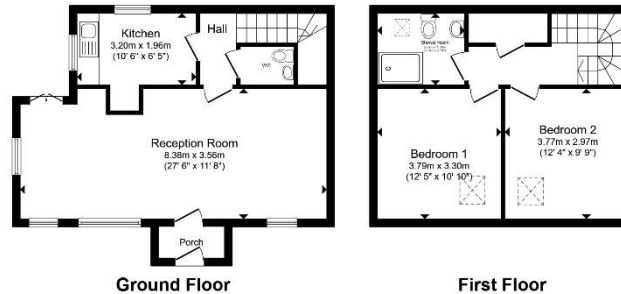


welcome to

Blackbird Cottages Stortford Road, Hatfield Heath Bishop's Stortford

- Two bedrooms
- Detached
- Fitted kitchen
- Sought after location
- Allocated parking

Tenure: Freehold EPC Rating: C
Council Tax Band: E



Total floor area 83.5 m² (898 sq ft.) approx.
This floor plan is for illustrative purposes only. It is not drawn to scale. Any measurements, floor areas (including any total floor area), openings and orientation are approximate. No details are guaranteed, they cannot be relied upon for any purpose and they do not form part of any agreement. No liability is taken for any error, omission or misstatement. A party must rely upon its own inspector(s). Powered by www.propertybox.io



offers over
£400,000



Please note the marker reflects the
postcode not the actual property

view this property online williamhbrown.co.uk/Property/HLO105506



Property Ref:
HLO105506 - 0003

1. MONEY LAUNDERING REGULATIONS Intending purchasers will be asked to produce identification documentation at a later stage and we would ask for your co-operation in order that there is no delay in agreeing the sale. 2. These particulars do not constitute part or all of an offer or contract. 3. The measurements indicated are supplied for guidance only and as such must be considered incorrect. Potential buyers are advised to recheck measurements before committing to any expense. 4. We have not tested any apparatus, equipment, fixtures or services and it is in the buyers interest to check the working condition of any appliances. 5. Where an EPC, or a Home Report (Scotland only) is held for this property, it is available for inspection at the branch by appointment. If you require a printed version of a Home Report, you will need to pay a reasonable production charge reflecting printing and other costs. 6. We are not able to offer an opinion either written or verbal on the content of these reports and this must be obtained from your legal representative. 7. Whilst we take care in preparing these reports, a buyer should ensure that his/her legal representative confirms as soon as possible all matters relating to title including the extent and boundaries of the property and other important matters before exchange of contracts.

William H Brown is a trading name of Sequence (UK) Limited which is registered in England and Wales under company number 4268443, Registered Office is Cumbria House, 16-20 Hockliffe Street, Leighton Buzzard, Bedfordshire, LU7 1GN. VAT Registration Number is 500 2481 05.


william h brown



01279 433469



harlow@williamhbrown.co.uk



15 Broad Walk, HARLOW, Essex, CM20 1HX



williamhbrown.co.uk