



Store Street

London, WC1E

£3,683.33 per month
(£850.00 per week)

A bright duplex apartment finished to a high standard benefiting from wooden flooring in the reception & kitchen, spacious bedrooms with ample storage and fully fitted contemporary bathroom.

CHESTERTONS



Store Street

London, WC1E

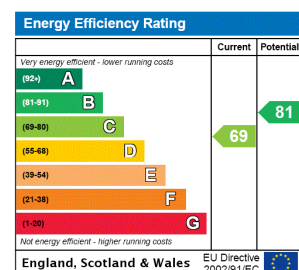
- Duplex Apartment
- Heart of Bloomsbury
- Close to Transport Links
- 2 Double Bedrooms
- Modern Finishes



A bright two bedroom duplex apartment finished to a high standard. Benefiting from wooden flooring in the reception & kitchen, spacious bedrooms with ample storage and excellent outlook on to desirable Store Street. The semi open plan kitchen has modern finishes and integrated appliances.

Conveniently located for both Tottenham Court Road and Goodge Street stations. Amenities of both Bloomsbury & Fitzrovia are at your doorstep. Store Street is one of the best streets in Bloomsbury, boasting independent shops and cafes contributing to a neighbourhood feel.

Minimum Term: 12 months
Deposit Required: £4,250.00
Local Authority: Camden
Council Tax Band: E
EPC Rating: C
Furnished, Part Furnished, Unfurnished

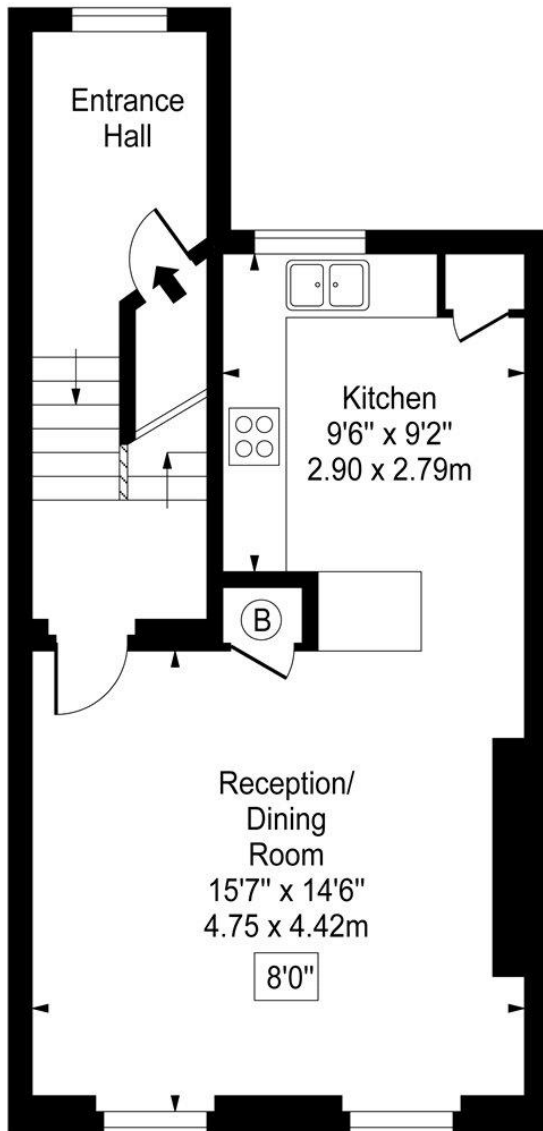


Chestertons Covent Garden Lettings

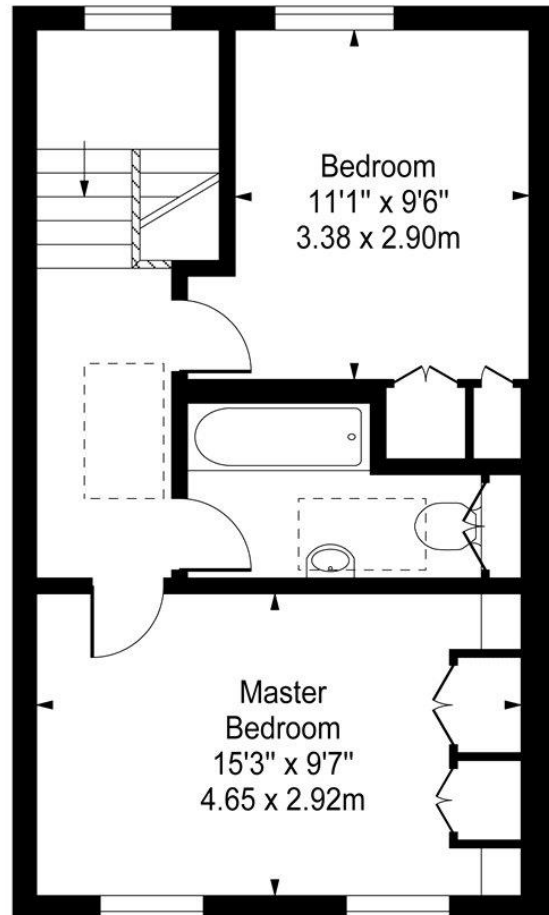
196 Shaftesbury Avenue
 Covent Garden
 London
 WC2H 8JF
 coventgardenlettingsusers@chestertons.co.uk
 02030408400
 chestertons.co.uk

Additional tenant charges apply (fees apply to non-AST tenancies only)
 Tenancy Agreement Fee: £300
 References per Tenant/Guarantor: £60
 Inventory check (approx. £100 – £250 inc. VAT)
 chestertons.co.uk/property-to-rent/applicable-fees

Store Street



Second Floor



Third Floor

Approx Gross Internal Area **872 Sq Ft - 81.01 Sq M**

For Illustration Purposes Only - Not To Scale

www.goldlens.co.uk

Ref. No. 007467M

