

Alternative  
available



## Price

£1,675 PCM

Fees Apply



Available 27/02/26

Southlake Road  
London SE28

*Wards*

Helping you move forwards



## Main Features

- BRAND NEW BUILD**
- Sixth floor flat**
- Open plan lounge/kitchen**
- Ample storage space**
- Integrated kitchen appliances**
- Good transport links**



**Deposit required is £1,932.69**  
**- Council Tax Band N/A**

Renting a property is a big commitment and we recommend that you visit the local authority website and these websites which offer helpful information and advice about letting

[www.gov.uk/government/publications/how-to-rent](http://www.gov.uk/government/publications/how-to-rent)

[www.gov.uk/private-renting](http://www.gov.uk/private-renting)

[www.wardsofkent.co.uk/renting/tenancy-fees-individuals/](http://www.wardsofkent.co.uk/renting/tenancy-fees-individuals/)

[www.gov.uk/green-deal-energy-saving-measures](http://www.gov.uk/green-deal-energy-saving-measures)

**Call Dartford 01322 311291 ■ [wardsofkent.co.uk](http://wardsofkent.co.uk)**

IMPORTANT INFORMATION: Please contact our Lettings Team who will confirm the total costs involved in renting this property. For clarification, we wish to inform the prospective tenant that we have prepared these details as a general guide. The agent has not carried out a detailed survey nor tested the services, appliances, or specific fittings (unless otherwise stated), and no warranty can be given as to their condition. All room measurements are taken at floor level. We strongly recommend that all the information which we provide about the property is verified by yourself and your advisers. The contents of this publication are © Wards, 2015. Wards is a trading name of Arun Estates Limited Registered in England No. 2597969

## Accommodation

**Lounge/Kitchen** 7.38m x 3.11m

**Bedroom** 4.74m x 2.80m

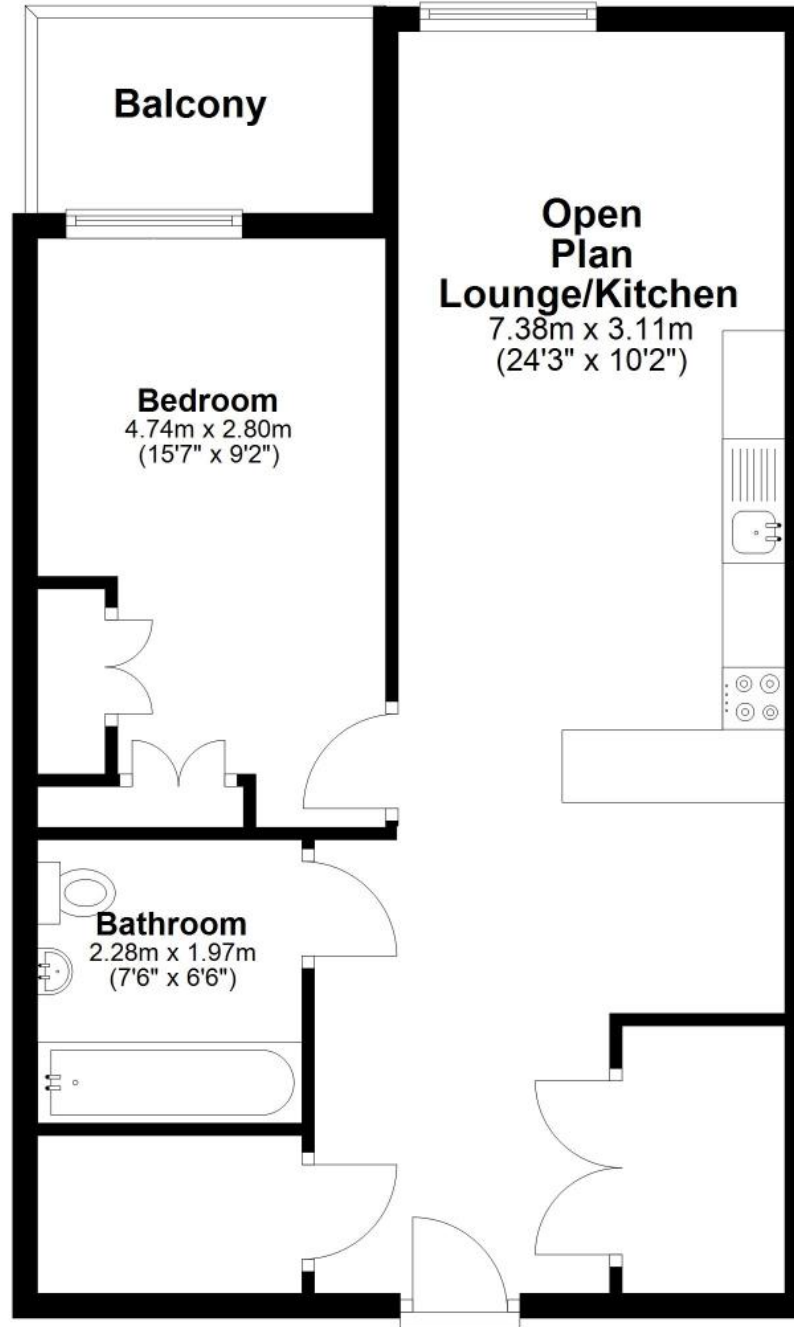
**Bathroom** 2.28m x 1.97m

**Balcony**



# Sixth Floor

Approx. 58.9 sq. metres (633.7 sq. feet)



Total area: approx. 58.9 sq. metres (633.7 sq. feet)