



All Saints Court, Bury St. Edmunds, Suffolk, IP33 1TF

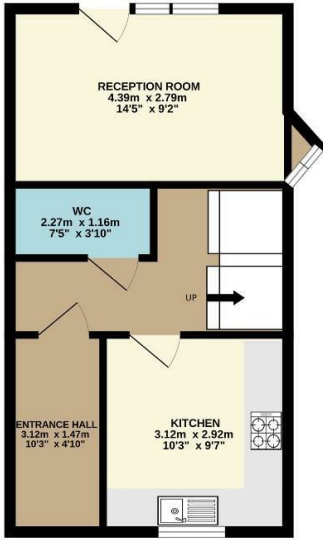
Rent - £1,875 PCM Deposit - £2,163

Modern town house which is located in a select, gated community in a secluded location just off the town centre and close to all its amenities and facilities. The property offers superb access to the A14 and approximately 30 minutes drive to RAF Mildenhall/Lakenheath. Spacious accommodation set over three floors and comprises 3/4 bedrooms, 2.5 bathrooms, Kitchen, Ground Floor Reception Room, First Floor Sitting Room. A courtyard garden offering a good degree of privacy and allocated parking. Viewing is highly recommended to fully appreciate the fantastic location and the accommodation on offer.

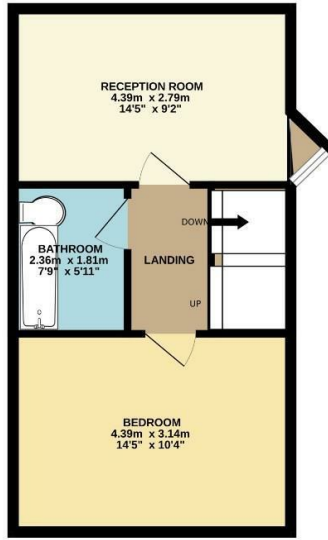
- VERSATILE AND SPACIOUS TOWN HOUSE
- MODERN FINISH
- VERSATILE ACCOMMODATION OVER 3 FLOORS
- EPC C, GAS HEATING, COUNCIL TAX BAND D
- ENCLOSED COURTYARD
- 3/4 BEDROOMS
- TWO BATHROOMS AND CLOAKROOM
- GATED DEVELOPMENT CLOSE TO TOWN CENTRE
- AVAILABLE NOW
- OFF ROAD PARKING



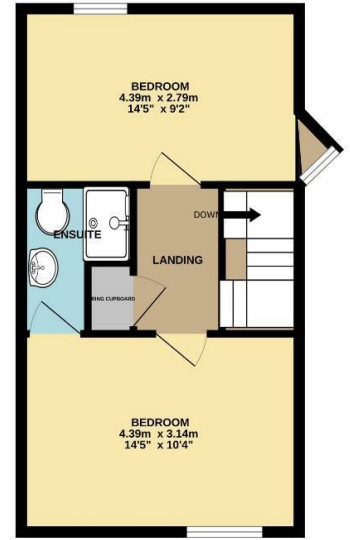
GROUND FLOOR
36.7 sq.m. (395 sq.ft.) approx.



1ST FLOOR
36.7 sq.m. (395 sq.ft.) approx.



2ND FLOOR
36.7 sq.m. (395 sq.ft.) approx.



TOTAL FLOOR AREA: 110.2 sq.m. (1186 sq.ft.) approx.

Whilst every attempt has been made to ensure the accuracy of the floorplan contained here, measurements of doors, windows, rooms and any other items are approximate and no responsibility is taken for any error, omission or mis-statement. This plan is for illustrative purposes only and should be used as such by any prospective purchaser. The services, systems and appliances shown have not been tested and no guarantee as to their operability or efficiency can be given.
Made with Metropix ©2024

