

HENRY  
MOORE  
COURT

CHELSEA SW3









A spectacular four-bedroom apartment offering grand lateral living, elegant interiors and extensive outdoor space, positioned within Chelsea's exclusive Henry Moore Court with concierge and parking.







Occupying a prime third-floor position within the prestigious Henry Moore Court, this exceptional four-bedroom apartment provides approximately 3,327 sq ft / 309.1 sq m of beautifully designed accommodation. The property combines generous proportions, refined contemporary finishes, and excellent natural light, creating a home of remarkable quality and comfort.























The principal bedroom suite is thoughtfully positioned and designed as a tranquil retreat. It includes a spacious bedroom, bespoke dressing room, and a beautifully appointed en suite bathroom finished to the highest specification.











Each of the three additional bedroom suites is generously sized, with fitted wardrobes and elegant en suite bathrooms, providing comfort and independence for family members or guests.

A well-equipped utility room, guest WC, and additional storage areas complete the accommodation, ensuring a home that balances practicality with modern refinement.









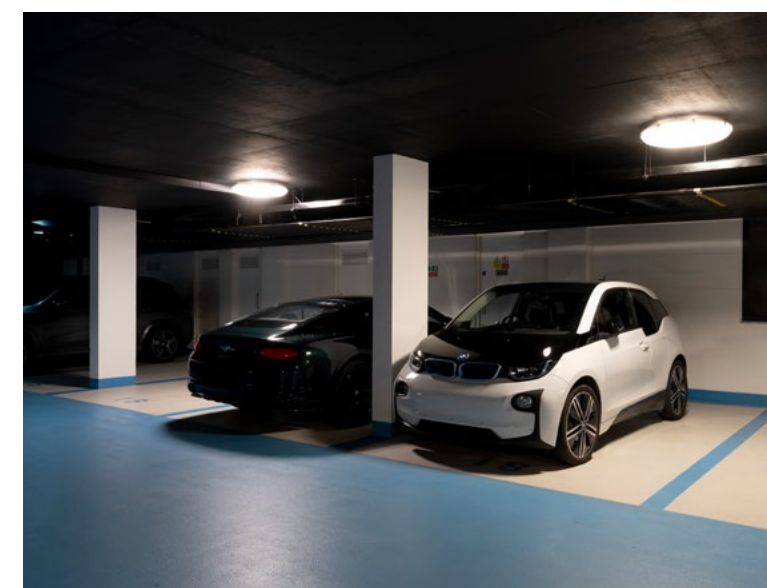




Henry Moore Court is one of Chelsea's most distinguished modern developments, offering 24-hour concierge and security, secure underground parking for two cars, a private residents' gym, and meticulously designed interiors. The combination of scale, finish, and amenities makes this apartment an exceptional contemporary home in a premier SW3 address.

Henry Moore Court is ideally positioned moments from the King's Road and within walking distance of South Kensington. The area offers an abundance of high-end boutiques, cafés, and restaurants, along with easy access to cultural landmarks such as the Saatchi Gallery and the Victoria and Albert Museum.

Transport links are superb, with Sloane Square and South Kensington Underground Stations (District, Circle, and Piccadilly lines) providing swift connections to London and beyond.





Tenure: Leasehold with approximately 986 years remaining

Price: £11,000,000

Ground Rent: Peppercorn

Service Charge: £42,520.56

Local Authority: Royal Borough of Kensington and Chelsea

Council Tax: Band H

EPC: Rating TBC

Please note, we have not yet received confirmation from the client regarding certain information for this property. You should ensure you make your own enquiries regarding material information about this property.

Approximate Floor Area  
3,327 sq ft / 309.1 sq m

including limited use area 108 sq ft / 10.0 sq m  
excluding void, vault, lift, parking spaces

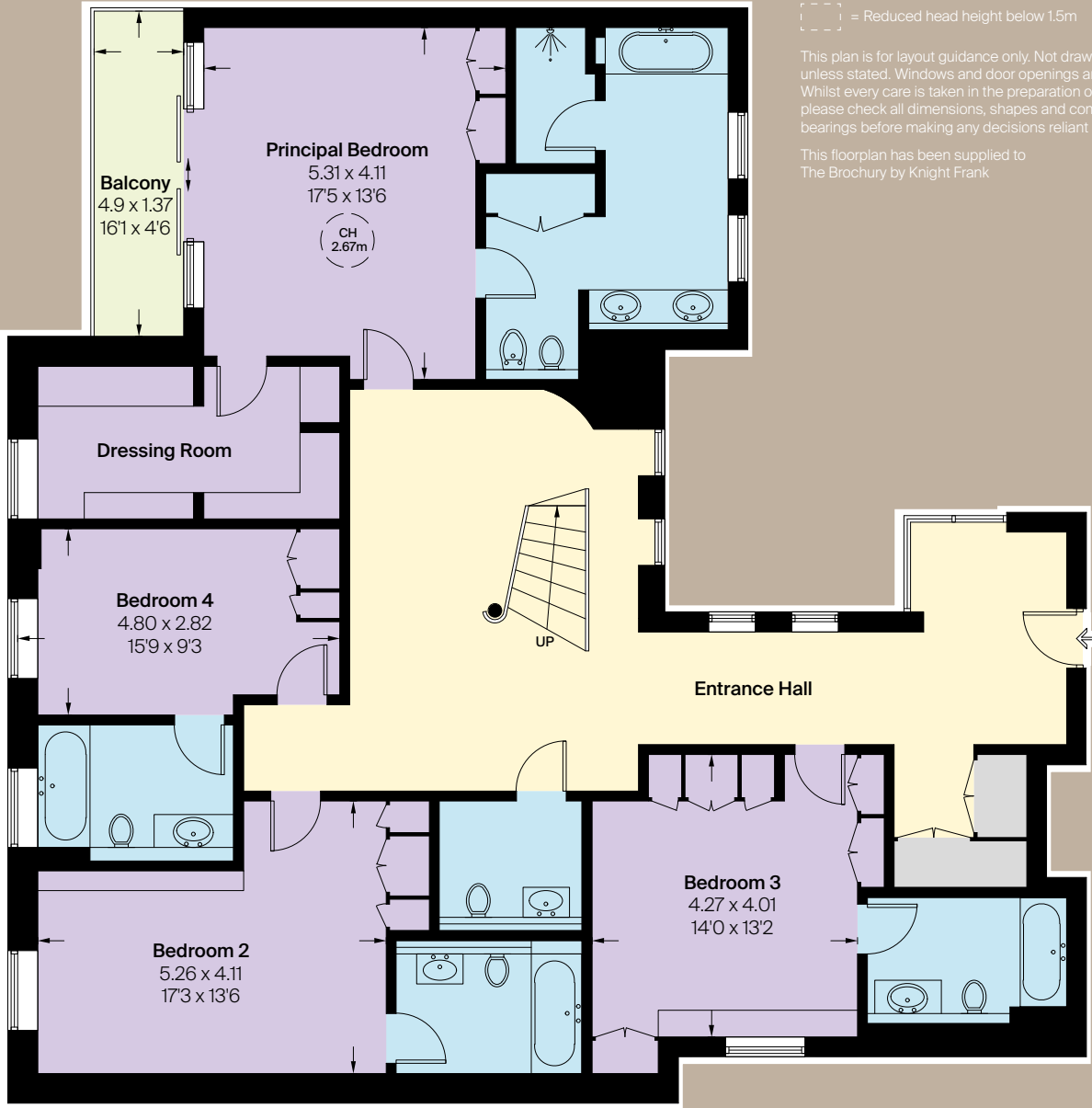
This plan is for guidance only and must not be relied upon as a statement of fact. Attention is drawn to the important notice on the last page of the text of the Particulars.



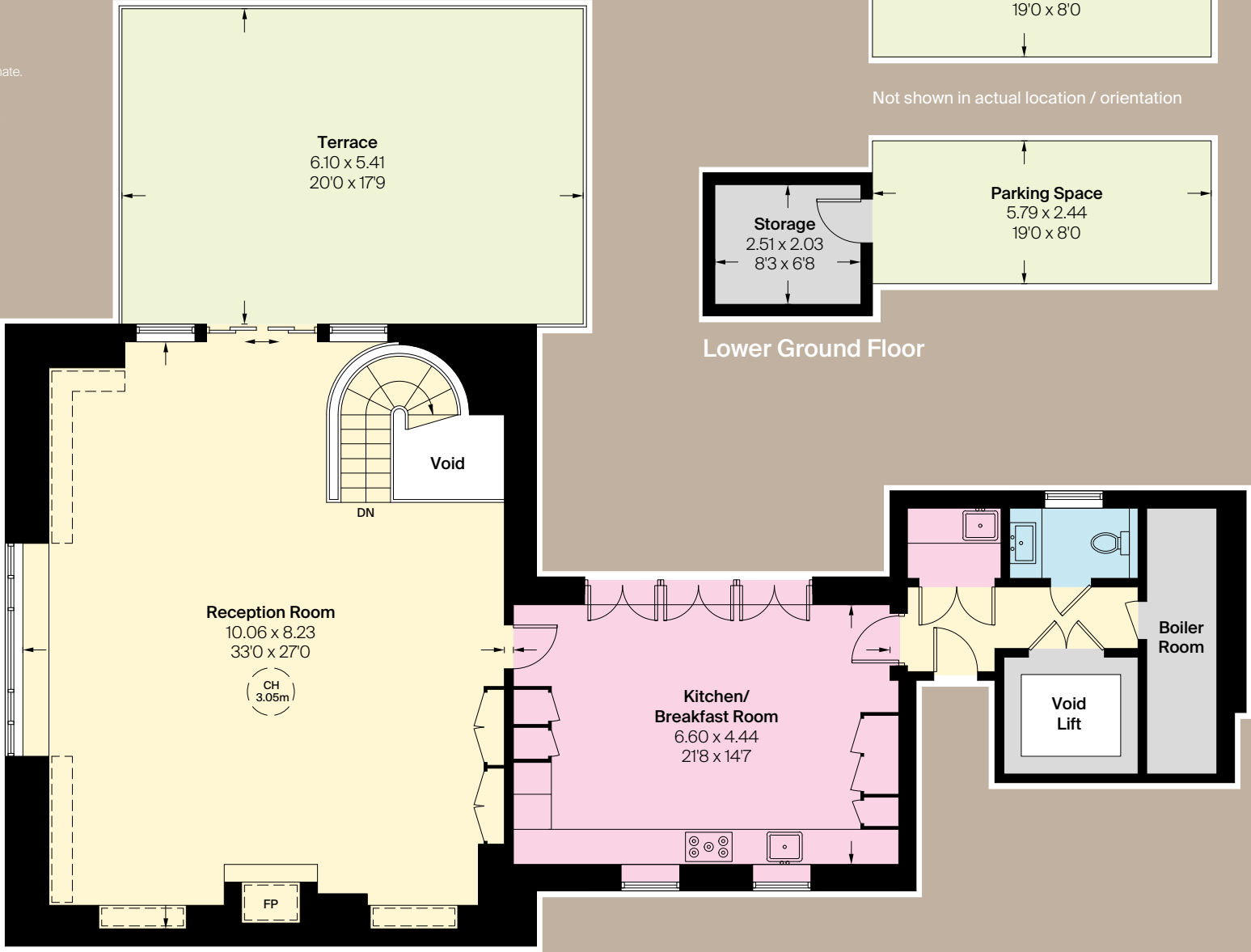
[---] = Reduced head height below 1.5m

This plan is for layout guidance only. Not drawn to scale unless stated. Windows and door openings are approximate. Whilst every care is taken in the preparation of this plan, please check all dimensions, shapes and compass bearings before making any decisions reliant upon them.

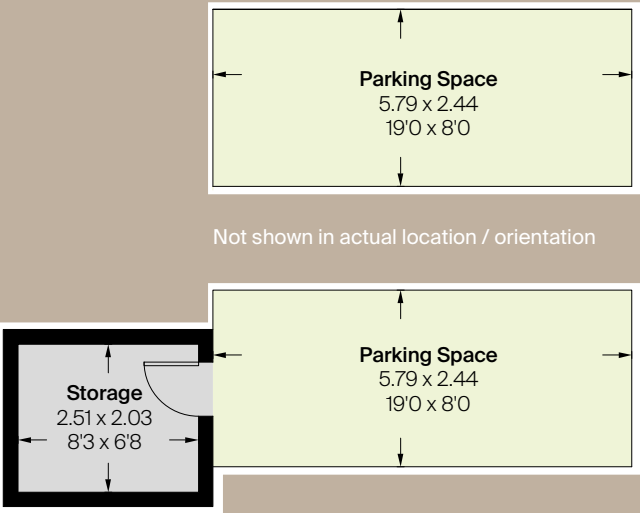
This floorplan has been supplied to The Brochure by Knight Frank



Third Floor



Fourth Floor



Lower Ground Floor

Not shown in actual location / orientation



We would be delighted  
to tell you more.

Rebecca Higgins  
+44 7876 056 100  
rebecca.higgins@knightfrank.com

**Knight Frank Chelsea**  
352A King’s Road  
London SW3 5UU

knightfrank.co.uk

knightfrank.co.uk

Your partners in property

**Fixtures and fittings:** A list of the fitted carpets, curtains, light fittings and other items fixed to the property which are included in the sale (or may be available by separate negotiation) will be provided by the Seller's Solicitors.

**Important Notice:** 1. Particulars: These particulars are not an offer or contract, nor part of one. You should not rely on statements by Knight Frank LLP in the particulars or by word of mouth or in writing ("information") as being factually accurate about the property, its condition or its value. Neither Knight Frank LLP nor any joint agent has any authority to make any representations about the property, and accordingly any information given is entirely without responsibility on the part of the agents, seller(s) or lessor(s). 2. Photos, Videos etc: The photographs, property videos and virtual viewings etc. show only certain parts of the property as they appeared at the time they were taken. Areas, measurements and distances given are approximate only. 3. Regulations etc: Any reference to alterations to, or use of, any part of the property does not mean that any necessary planning, building regulations or other consent has been obtained. A buyer or lessee must find out by inspection or in other ways that these matters have been properly dealt with and that all information is correct. 4. VAT: The VAT position relating to the property may change without notice. 5. To find out how we process Personal Data, please refer to our Group Privacy Statement and other notices at <https://www.knightfrank.com/legals/privacy-statement>.

**Particulars dated November 2025. Photographs and videos dated October 2025.**

All information is correct at the time of going to print. Knight Frank is the trading name of Knight Frank LLP. Knight Frank LLP is a limited liability partnership registered in England and Wales with registered number OC305934. Our registered office is at 55 Baker Street, London W1U 8AN. We use the term 'partner' to refer to a member of Knight Frank LLP, or an employee or consultant. A list of members names of Knight Frank LLP may be inspected at our registered office. If you do not want us to contact you further about our services then please contact us by either calling 020 3544 0692, email to [marketing.help@knightfrank.com](mailto:marketing.help@knightfrank.com) or post to our UK Residential Marketing Manager at our registered office (above) providing your name and address. 28/11/25

KF-251118-07-B-GG



