



Connells

Geddes Close
Hawkinge Folkestone



Property Description

The ground floor accommodation is well arranged, with a welcoming entrance hall leading to a spacious lounge providing an ideal setting for relaxation and entertaining. To the rear, a contemporary kitchen flows seamlessly into a bright conservatory, creating a versatile additional living space with views over the garden. A separate dining room offers further flexibility, perfect for family meals or hosting guests. A convenient ground floor WC and internal access to the garage complete the downstairs layout.

Upstairs, the property offers four well-proportioned bedrooms, including a principal bedroom with en-suite shower room. A modern family bathroom serves the remaining three bedrooms, all of which are presented to a high standard.

Externally, the property benefits from a private rear garden that backs directly onto the Kent Battle of Britain Museum, offering a unique and attractive outlook with no immediate rear development.

The quiet cul-de-sac location enhances the sense of privacy, while to the front there is a driveway and access to the integral garage.

This superb home combines a desirable location with high-quality refurbishment and practical living space, making it an excellent opportunity for buyers seeking a move-in-ready family home in Hawkinge.

The ground floor accommodation is well arranged, with a welcoming entrance hall leading to a spacious lounge providing an ideal setting for relaxation and entertaining. To the rear, a contemporary kitchen flows seamlessly into a bright conservatory, creating a versatile additional living space with views over the garden. A separate dining room offers further flexibility, perfect for family meals or hosting guests. A convenient ground floor WC and internal access to the garage complete the downstairs layout.

Upstairs, the property offers four well-proportioned bedrooms, including a principal bedroom with en-suite shower room. A modern family bathroom serves the remaining three bedrooms, all of which are presented to a high standard.

Externally, the property benefits from a private rear garden that backs directly onto the Kent Battle of Britain Museum, offering a unique and attractive outlook with no immediate rear development.

The quiet cul-de-sac location enhances the sense of privacy, while to the front there is a driveway and access to the integral garage.

This superb home combines a desirable location with high-quality refurbishment and practical living space, making it an excellent opportunity for buyers seeking a move-in-ready family home in Hawkinge.

The ground floor accommodation is well arranged, with a welcoming entrance hall leading to a spacious lounge providing an ideal setting for relaxation and entertaining. To the rear, a contemporary kitchen flows seamlessly into a bright conservatory, creating a versatile additional living space with views over the garden. A separate dining room offers further flexibility, perfect for family meals or hosting guests. A convenient ground floor WC and internal access to the garage complete the downstairs layout.

Upstairs, the property offers four well-proportioned bedrooms, including a principal bedroom with en-suite shower room. A modern family

bathroom serves the remaining three bedrooms, all of which are presented to a high standard.

Externally, the property benefits from a private rear garden that backs directly onto the Kent Battle of Britain Museum, offering a unique and attractive outlook with no immediate rear development.

The quiet cul-de-sac location enhances the sense of privacy, while to the front there is a driveway and access to the integral garage.

This superb home combines a desirable location with high-quality refurbishment and practical living space, making it an excellent opportunity for buyers seeking a move-in-ready family home in Hawkinge.

The ground floor accommodation is well arranged, with a welcoming entrance hall leading to a spacious lounge providing an ideal setting for relaxation and entertaining. To the rear, a contemporary kitchen flows seamlessly into a bright conservatory, creating a versatile additional living space with views over the garden. A separate dining room offers further flexibility, perfect for family meals or hosting guests. A convenient ground floor WC and internal access to the garage complete the downstairs layout.

Upstairs, the property offers four well-proportioned bedrooms, including a principal bedroom with en-suite shower room. A modern family bathroom serves the remaining three bedrooms, all of which are presented to a high standard.

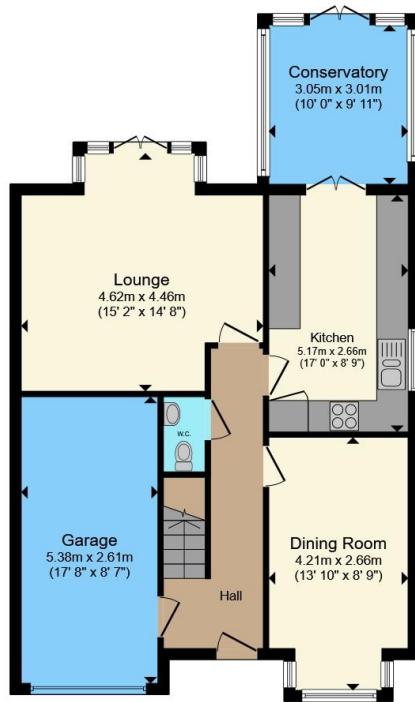
Externally, the property benefits from a private rear garden that backs directly onto the Kent Battle of Britain Museum, offering a unique and attractive outlook with no immediate rear development.

The quiet cul-de-sac location enhances the sense of privacy, while to the front there is a driveway and access to the integral garage.

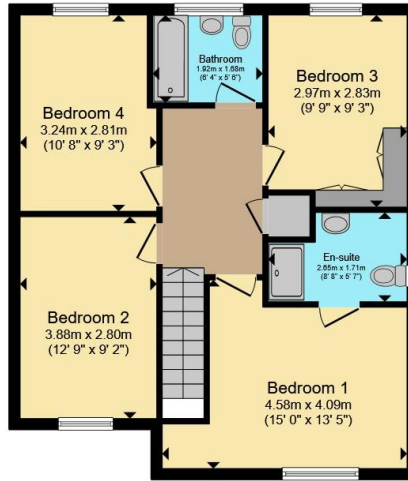
This superb home combines a desirable location with high-quality refurbishment and practical living space, making it an excellent opportunity for buyers seeking a move-in-

ready family home in Hawkinge.





Ground Floor



First Floor

Total floor area 138.7 m² (1,493 sq.ft.) approx

This floor plan is for illustrative purposes only. It is not drawn to scale. Any measurements, floor areas (including any total floor area), openings and orientation are approximate. No details are guaranteed, they cannot be relied upon for any purpose and they do not form part of any agreement. No liability is taken for any error, omission or misstatement. A party must rely upon its own inspection(s). Powered by www.propertybox.io



To view this property please contact Connells on

T 01233 622206
E ashford@connells.co.uk

77 High Street
 ASHFORD TN24 8SF

EPC Rating: C Council Tax
 Band: E

view this property online connells.co.uk/Property/ASH408898

Tenure: Freehold



1. MONEY LAUNDERING REGULATIONS Intending purchasers will be asked to produce identification documentation at a later stage and we would ask for your co-operation in order that there will be no delay in agreeing the sale. 2. These particulars do not constitute part or all of an offer or contract. 3. The measurements indicated are supplied for guidance only and as such must be considered incorrect. Potential buyers are advised to recheck measurements before committing to any expense. 4. We have not tested any apparatus, equipment, fixtures, fittings or services and it is in the buyers interest to check the working condition of any appliances.

Connells Residential is registered in England and Wales under company number 1489613, Registered Office is Cumbria House, 16-20 Hockliffe Street, Leighton Buzzard, Bedfordshire, LU7 1GN. VAT Registration Number is 500 2481 05.

See all our properties at www.connells.co.uk | www.rightmove.co.uk | www.zoopla.co.uk

Property Ref: ASH408898 - 0002