

12 Meads Road, Enfield, EN3 5HR
Asking price £450,000



PINDROP PROPERTY



12 Meads Road, Enfield, EN3 5HR

Asking price £450,000

Council Tax Band: C

Chain Free Located on Meads Road, EN3, this three-bedroom tunnel-link terrace offers a well-balanced home with real usable space, a standout garden and the advantage of being chain free.

The property is in good condition throughout and has a layout that's practical without compromise. On the ground floor, there is a bathroom fitted with both a bath and a separate shower cubicle, with the WC positioned separately, a setup that works particularly well for busy households. To the rear, the large lean-to has been adapted into a utility and workshop space, adding a layer of functionality that's often missing in similar homes.

The garden is where this property really separates itself. It's substantially larger than most, giving you plenty outdoor space, whether that's for entertaining, family use, or future plans, it gives you options.

To the front, off-street parking adds everyday convenience.

For commuters, Brimsdown & Turkey Street railway stations are within easy reach, providing direct access into London Liverpool Street, while local shops, schools and amenities are all close by.

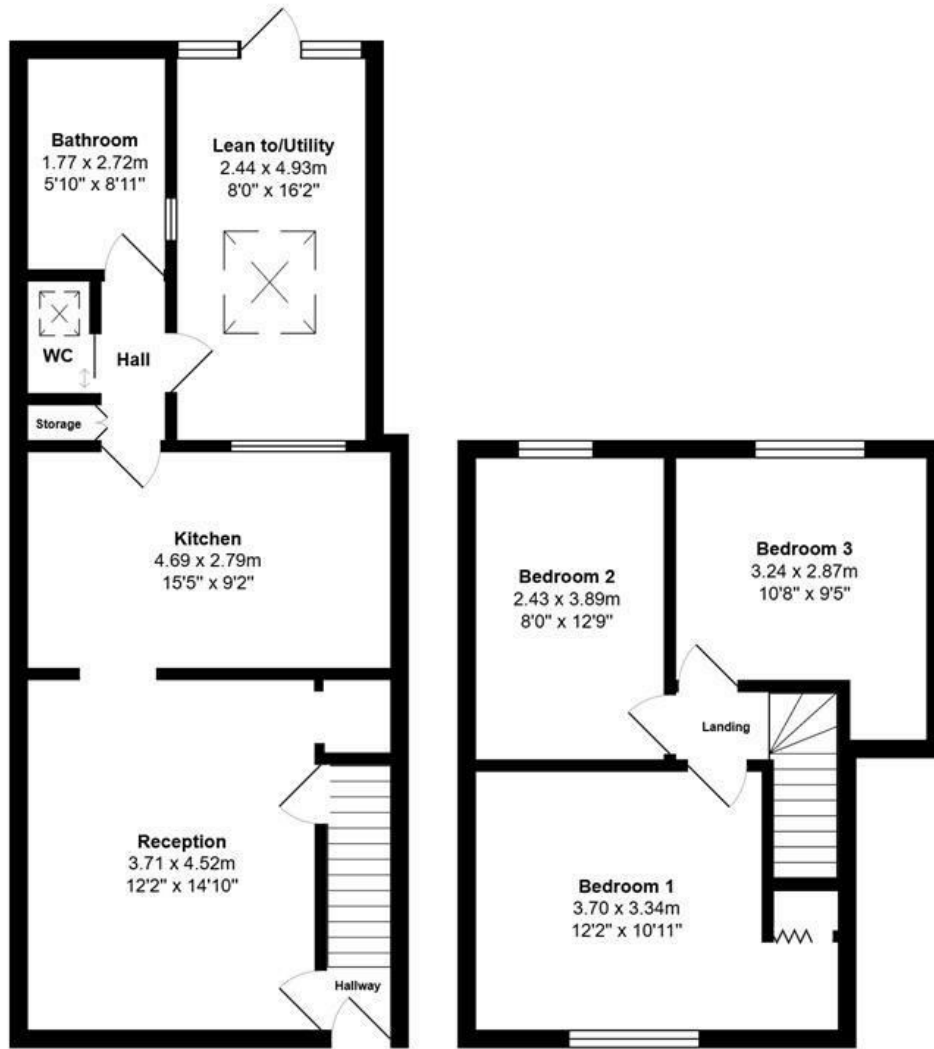
A well-kept house with genuine space, a garden that stands out, and no onward chain, making it a smart, uncomplicated move.











Ground Floor
Area: 57.3 m² ... 617 ft²

First Floor
Area: 38.8 m² ... 418 ft²



PINDROP PROPERTY

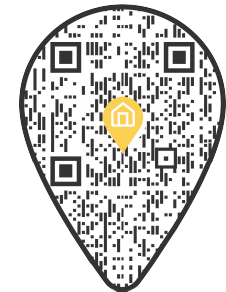
Total Area: 96.1 m² ... 1035 ft²

All measurements are approximate and for display purposes only



PINDROP PROPERTY

0203 869 0201
info@pindropproperty.com
www.pindropproperty.com



Energy Efficiency Rating		Current	Potential
Very energy efficient - lower running costs			
(92 plus) A			86
(81-91) B			
(69-80) C			
(55-68) D		65	
(39-54) E			
(21-38) F			
(1-20) G			
Not energy efficient - higher running costs			
England & Wales		EU Directive 2002/91/EC	