

Unit 6 13 Burton Place, Manchester, Lancashire, M15 4PT
Tel: 0161 637 8336
Email: contactus@ascendproperties.com
www.ascendproperties.com

Ascend

Built on higher standards



City Link, Hessel Street, Salford

£925 PCM

The centrepiece of this two-bedroom property is the open plan kitchen/lounge complete with tiled kitchen area, high quality tables, seats, sofas and a large window which truly brings this apartment to life. The bedrooms are nice sized doubles so you'll be able to kick your shoes off after a long day, stretch out and enjoy the peaceful surroundings. This spacious property also benefits from soft carpets and a nice sized bathroom in a lovely white finish.

MediaCityUK is just a stone's throw away and travelling to and from the city centre is an absolute breeze. If you're interested in having a closer look, or have any questions, do get in touch. And just so you know, the pictures for this apartment are for marketing purposes only. The internal fixtures, fittings and furnishings may vary.

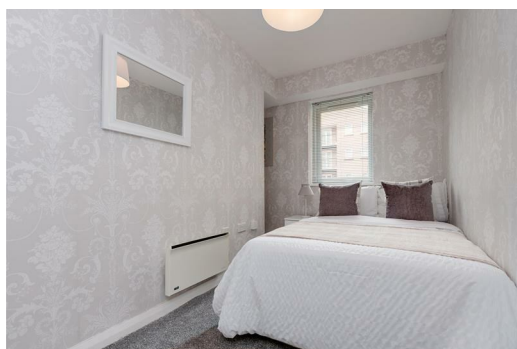
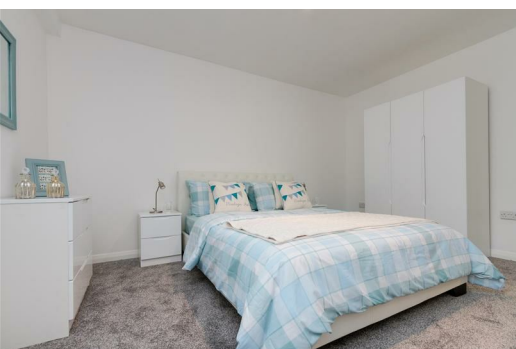
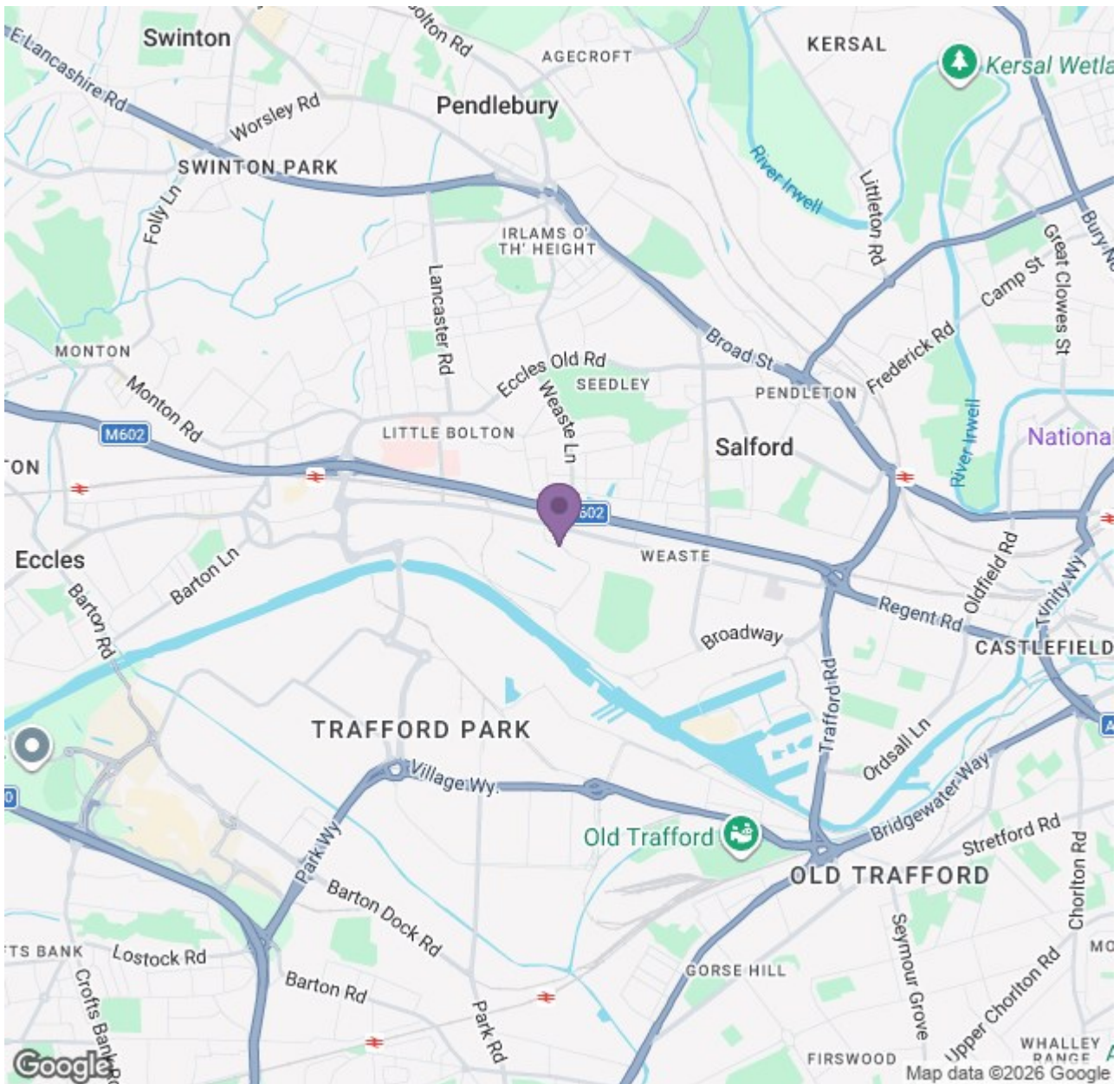
Available 12th March 2026

Deposit: £890

Council Tax Band: B

12 Month Tenancy





Energy Efficiency Rating			Environmental Impact (CO ₂) Rating		
Rating	Score	Band	Rating	Score	Band
A	92	A	A	73	A
B	84	B	B	64	B
C	77	C	C	55	C
D	69	D	D	46	D
E	61	E	E	37	E
F	53	F	F	28	F
G	45	G	G	19	G