



Millet Road, Greenford  
£565,000

**SAB**  
ESTATES



## Millet Road

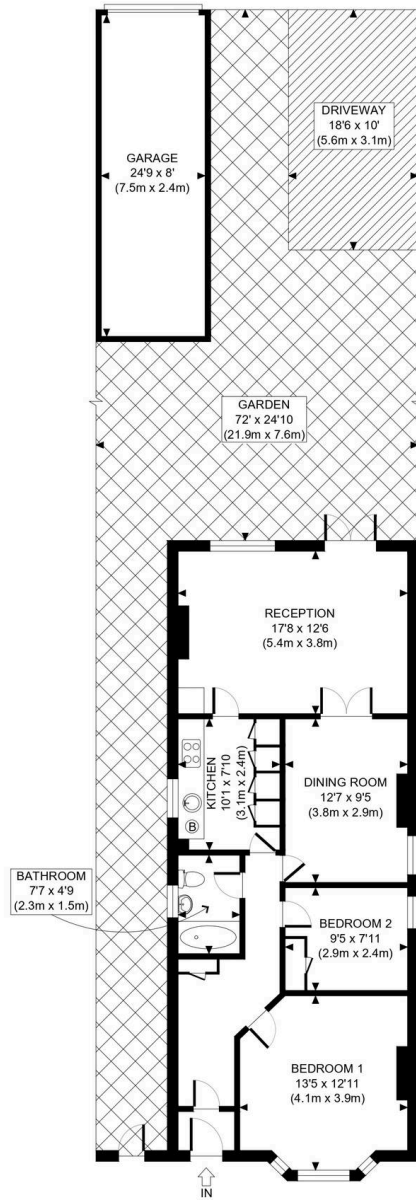
Greenford

- Chain Free
- Driveway for Two Vehicles
- Private Rear Garden
- Side Entrance
- Great Transport Links
- Potential for Further Extension STPP
- Rear Garage

Council Tax band: D

Tenure: Freehold





SECOND FLOOR  
 GROSS INTERNAL  
 FLOOR AREA 825 SQ FT

APPROX. GROSS INTERNAL FLOOR AREA WITH GARAGE: 1023 SQ FT/ 95 SQM  
 APPROX. GROSS INTERNAL FLOOR AREA WITHOUT GARAGE: 825 SQ FT/ 77 SQM



This plan is for illustrative purposes only and should be used as such by any prospective client. Whilst every attempt has been made to ensure the accuracy of the Floor Plan contained here, measurements of the doors, windows, rooms and any other items are approximate and no responsibility is taken for any errors, omissions, or misstatement. The services, systems and appliances shown have not been tested and no guarantee as to the operability or efficiency can be given.



SAB  
ESTATES

## SAB Estates

236-238 Ruislip Road, Greenford - UB6 9RS

020 8575 2929 • [info@sabestates.com](mailto:info@sabestates.com) • [www.sabestates.com/](http://www.sabestates.com/)