

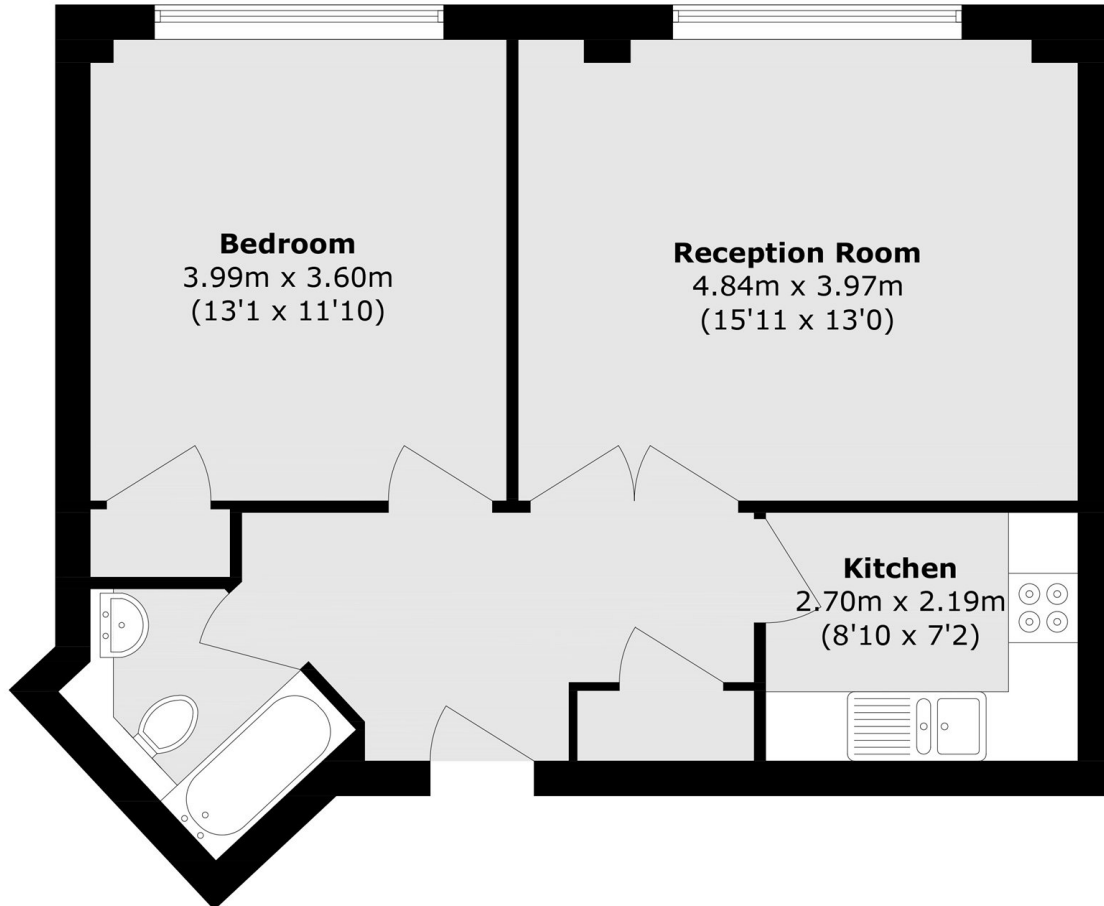


BELVEDERE ROAD, SE1

£500,000

Set within the ever-popular County Hall development, this well-proportioned apartment enjoys a south-east facing aspect and an unbeatable South Bank location. The property offers a spacious living and dining area, separate kitchen, double bedroom and secure underground parking.

- One bedroom
- 1st Floor
- 581 Sq Ft
- 24-hour concierge
- On-site gymnasium
- Swimming pool



Total area (approx.): 54.0 sq. m (581.2 sq. ft)

LiFE RESIDENTIAL

11 Flagstaff House, London,
SW8 2LZ

Sales: 020 7476 1408

Lettings: 020 7582 7989

Energy Rating: . We aim to make our particulars both accurate and reliable. However they are not guaranteed; nor do they form part of an offer or contract. If you require clarification on any points then please contact us, especially if you're traveling some distance to view. Please note that appliances and heating systems have not been tested and therefore no warranties can be given as to their good working order.