



3 Autumn Drive, Longwick  
Princes Risborough

*Brions*

Guide Price £445,000

## 3 Autumn Drive

Longwick, Princes Risborough

Stylish three-bedroom end terrace family home in the sought-after village of Longwick, offering a modern kitchen, spacious open-plan lounge dining area, contemporary walk-in shower room, private rear garden and allocated parking. Ideally positioned close to Princes Risborough town centre and mainline railway station. Viewing highly recommended.

Council Tax Band: E

Tenure: Freehold

EPC Energy Efficiency Rating: B

EPC Environmental Impact Rating: B

- Three-bedroom end terrace family home
- Two generous double bedrooms and one well-proportioned third bedroom
- Large open-plan lounge dining area
- Modern separate kitchen
- Contemporary shower room with walk-in enclosure
- Downstairs cloakroom
- Private rear garden
- Two allocated parking spaces
- Additional visitor parking to the side





#### Living Room / Dining Room

17' 5" x 19' 4" (5.30m x 5.90m)

Spacious open-plan living and dining area forming the heart of the home, offering clearly defined seating and dining zones, good natural light and direct access to the rear garden.

#### Kitchen

10' 4" x 10' 6" (3.16m x 3.21m)

Modern separate kitchen fitted with contemporary wall and base units, ample worktop space and provision for essential appliances. Practical layout suited to everyday family use.

#### Cloakroom

Ground floor cloakroom comprising WC and wash hand basin.

#### Principal Bedroom

17' 5" x 20' 1" (5.30m x 6.13m)

Exceptionally generous principal bedroom with excellent proportions and space for wardrobes and additional furniture.

#### Bedroom Two

9' 1" x 16' 3" (2.77m x 4.96m)

Well-sized double bedroom with space for freestanding wardrobes.

#### Bedroom Three

9' 8" x 9' 11" (2.94m x 3.01m)

Comfortable third bedroom suitable for a small double, nursery or home office.

#### Shower Room

6' 5" x 6' 5" (1.96m x 1.96m)

Contemporary shower room featuring walk-in shower, WC and wash hand basin.



## Garden

### Rear Garden

A pleasant and private rear garden providing a practical outdoor space for relaxing, dining and family use. Mainly laid to lawn with space for seating and entertaining, enclosed to offer a good degree of privacy. Well suited to summer use and straightforward maintenance.

### Parking

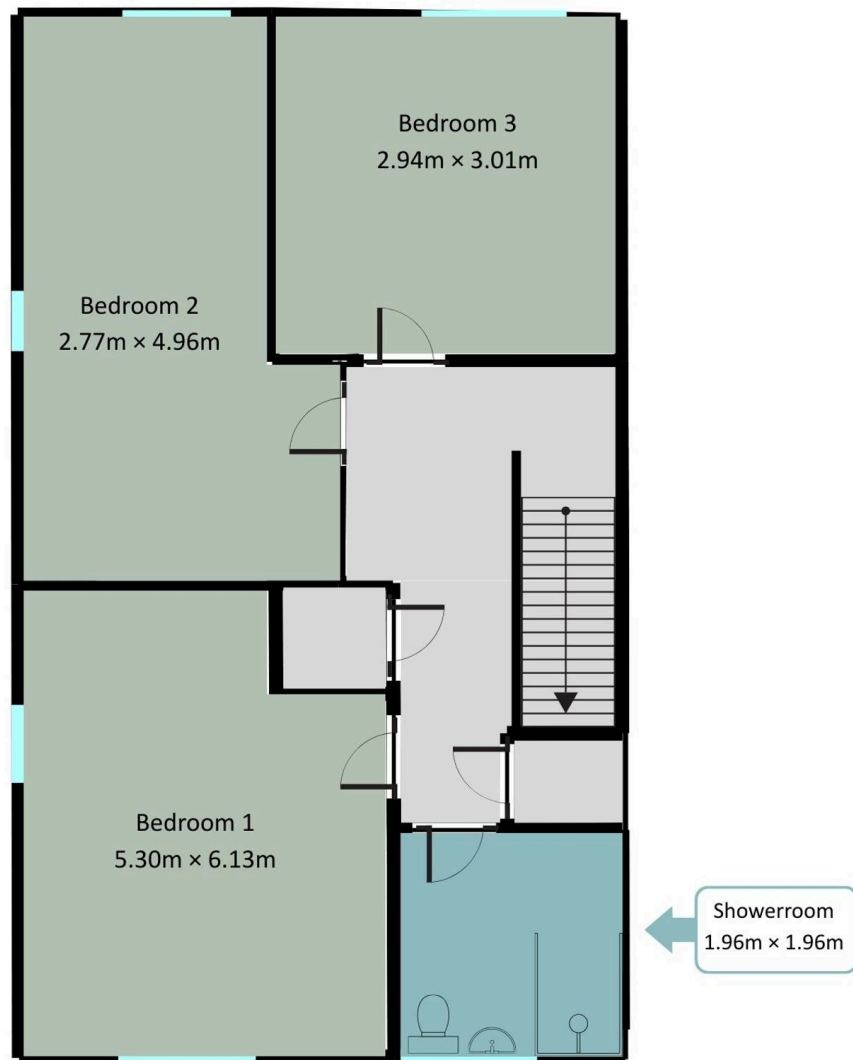
#### Allocated Parking

The property benefits from two allocated parking spaces, one positioned to the front and one to the side, providing convenient off-road parking for residents.

#### Visitor Parking

Additional visitor parking bays are available nearby, offering practical space for guests and further flexibility for everyday use.





Total rooms area: 47.1 sq m

Total area: 47.1 sq m

SIZES AND DIMENSIONS ARE APPROXIMATE, ACTUAL MAY VARY.  
FOR ILLUSTRATIVE PURPOSES ONLY.





# Brions

1 Cromwell Court New Street, Aylesbury - HP20 2PB

01296 532326 • [info@brions.co.uk](mailto:info@brions.co.uk) • [brions.co.uk/](http://brions.co.uk/)