



Greenham Road, N10

£1,500,000

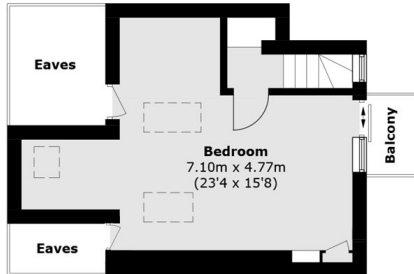
This well-presented Edwardian home boasts five double bedrooms, two reception rooms and stunning period features throughout. The house also benefits from having two w/c's, en suite and a spacious reception room leading on to a mature sized garden with a roof terrace with fantastic views.

Situated off of Coppetts Road which leads directly up to Muswell Hill Broadway and frequent bus routes that make all local underground stations easily accessible. The property falls within high demand catchments such as Fortismere secondary school and Coldfall primary school.

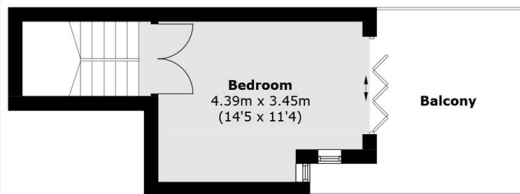
Features

- Five Bedrooms
- Guest WC
- Two Receptions
- Private Roof Terrace
- Period Features
- Double Glazing

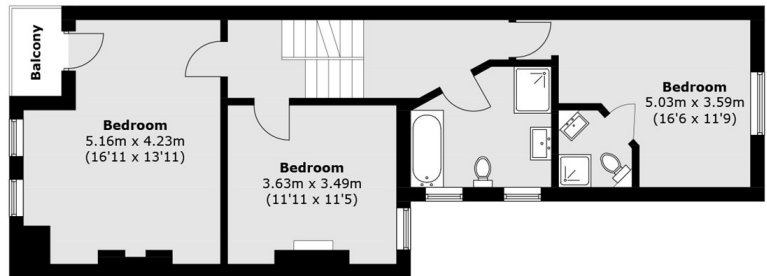
Greenham Road, London, N10



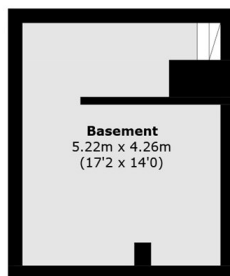
Third Floor



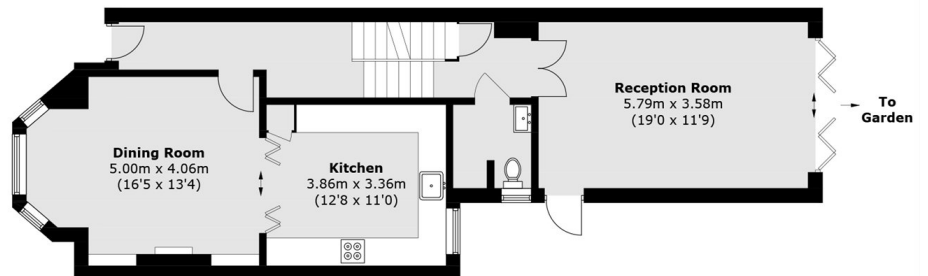
Second Floor



First Floor



Lower Ground Floor



Ground Floor

Total area (approx.): 207.4 sq. m (2,232.4 sq. ft)
(Including Basement / Excluding Eaves)
Balcony: 17.0 sq. m (183.0 sq. ft)