



## Oberman Road, NW10

£500,000

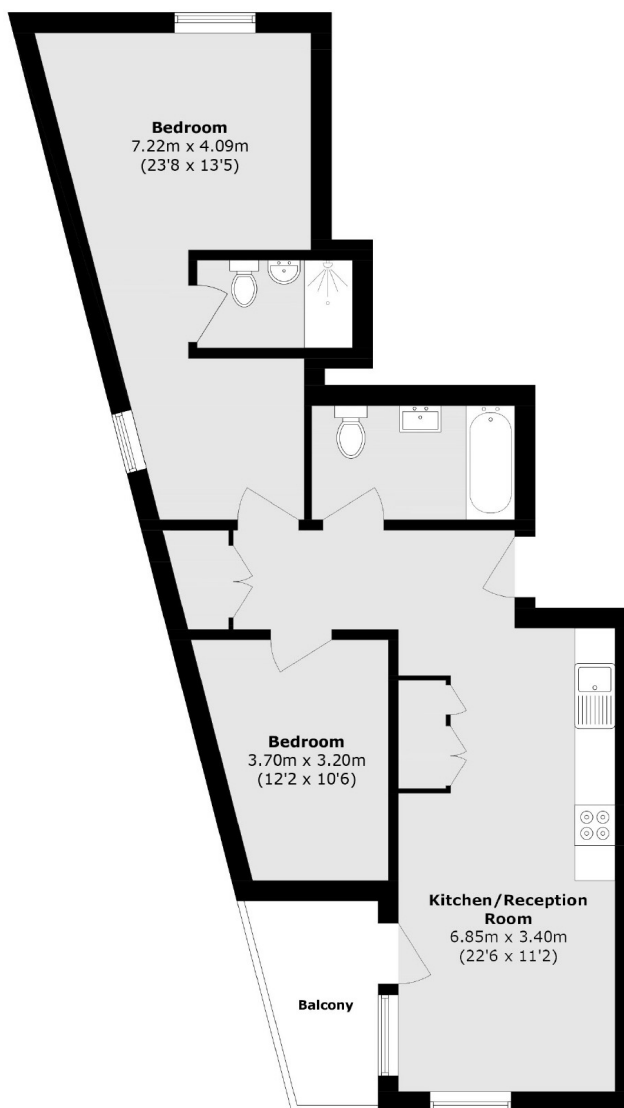
This two double bedroom, two bathroom apartment features a spacious open plan living area with a well equipped kitchen, underfloor heating and abundant natural light. The property further benefits from a private balcony and access to an on-site gym and fitness studio, indoor swimming pool, and beautifully landscaped communal gardens.

Located between leafy Dollis Hill and bustling Neasden, with its lovely open spaces including Brent Reservoir and Gladstone Park. Dollis Hill (Jubilee line) underground station is also a short walk away.

### Features

- New Build Apartment
- Open Plan Living Area
- Underfloor Heating
- Private Balcony
- Lift Access
- On Site Amenities

# Oberman Road, London, NW10



Total area (approx.): 68.3 sq. m (735.1 sq. ft)

Balcony area (approx.): 4.6 sq. m (49.5 sq. ft)