



Earls Court Road, W8

£1,000,000

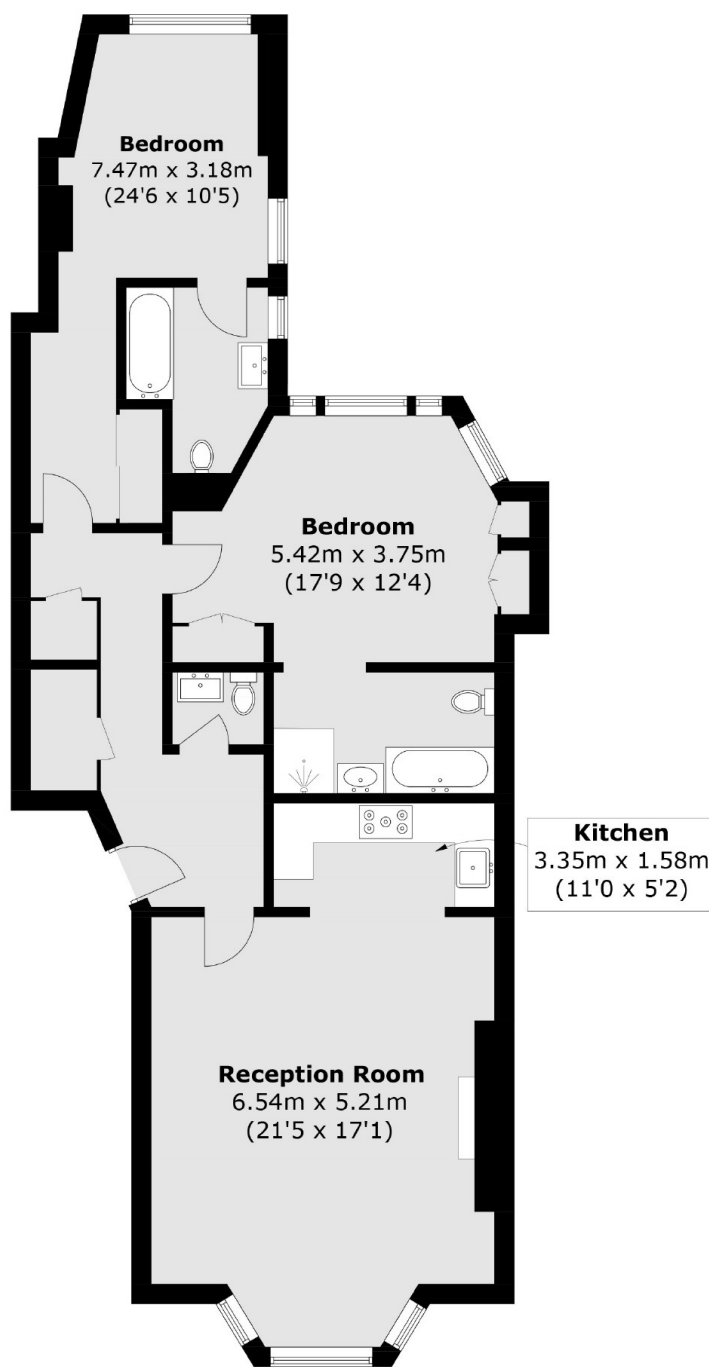
Occupying the raised ground floor of a distinguished Victorian building, this impeccably presented two double-bedroom, two-bathroom apartment combines classic architectural elegance with modern sophistication. The principal rooms are defined by soaring 3.8-meter ceilings and large sash windows, bathing the interiors in natural light and enhancing the sense of space and grandeur. The residence has been thoughtfully maintained and updated, preserving original period features while incorporating contemporary comforts. Both bedrooms offer generous proportions and serene ambiance, complemented by two sleek, modern bathrooms.

Earls Court Road is conveniently situated to access the superb shops and restaurants of Kensington High Street, as well as the many amenities and Earls Court Tube Station which offers excellent links across London.

Features

- High Ceilings
- Abundance Of Natural Light
- Walking Distance Of Amenities
- Recently Refurbished
- Two Bathrooms
- Two Spacious Bedrooms

Earls Court Road, London, W8



Ground Floor

Total area (approx.): 100.9 sq. m (1086 sq. ft)