



## Kings Farm Avenue, TW10

£3,000 Per calendar month

A three bedroom family home with a large South East facing garden and presented in great condition throughout. The property has been renovated to a high specification and offers bright interior, stylish and a modern finish.

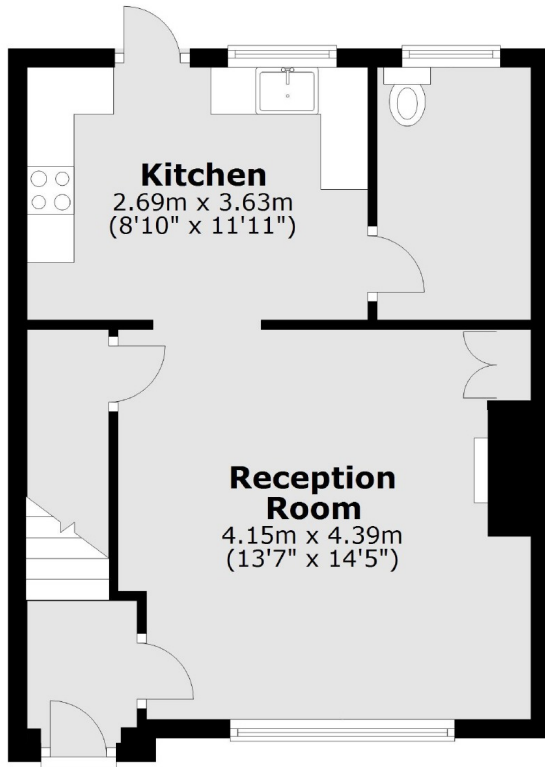
Kings Farm Avenue is a quiet cul-de-sac only moments from Central Richmond and within the catchment area for outstanding schools.

### Features

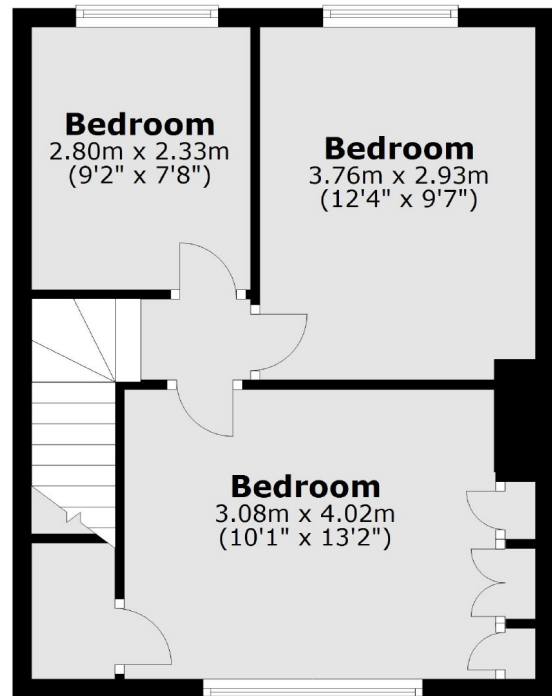
Three Bedrooms  
Bright Reception  
Brand New Kitchen  
Large Rear Garden  
Ample Storage

# Kings Farm Avenue, Richmond, TW10

## Ground Floor



## First Floor



Total area: approx. 74.5 sq. metres (801.4 sq. feet)