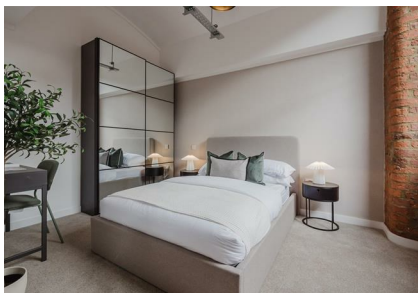


49 Bradford Road, Manchester, M40 7EY
£360,000
Council Tax Band: New Build



Grade II listed mill conversion**

This spacious two-bedroom apartment blends character, comfort, and convenience in one of Manchester's most distinctive developments. Perfect for professionals, couples, or sharers, the apartment offers generous open-plan living, two well-proportioned bedrooms, a contemporary bathroom, and large windows framing impressive views across the city.

Located within the iconic Brunswick Mill, residents can enjoy the charm of a historic conversion alongside modern finishes and excellent connectivity into Manchester city centre. Originally constructed in 1837,



ORLANDO REID

St Johns Court 19b Quay Street, Manchester, M3 3HN

01616760099

manchester@orlandoreid.co.uk

<https://www.orlandoreid.co.uk/manchester/>

Energy Efficiency Rating		
	Current	Potential
<i>Very energy efficient - lower running costs</i>		
(92 plus) A		
(81-91) B		
(69-80) C		
(55-68) D		
(39-54) E		
(21-38) F		
(1-20) G		
<i>Not energy efficient - higher running costs</i>		
England & Wales	EU Directive 2002/91/EC	