



Walworth Road, SE17

£2,250 Per calendar month

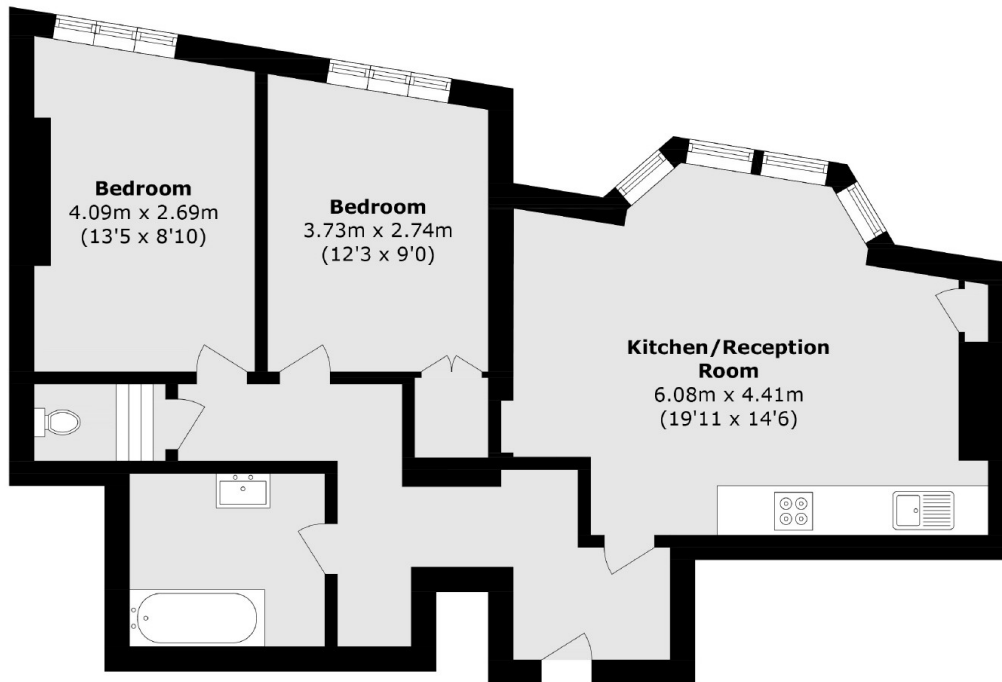
This spacious and stylish two bedroom flat has been recently refurbished, offering a fresh and modern interior throughout. Boasting two well-proportioned bedrooms, the property also features a contemporary kitchen and a modern bathroom.

Ideally situated, the flat is just a short walk from Elephant and Castle station, providing excellent transport links. Regular bus services into The City make commuting easy, while the surrounding area offers a vibrant mix of shops, cafes, and amenities.

Features

- Two Bedrooms
- Recently Refurbished
- Modern Bathroom
- New Kitchen
- Spacious Rooms
- Great Location

Walworth Road, London, SE17



Total area (approx.): 61.8 sq. m (665.2 sq. ft)