



## Balls Pond Road, N1

£650,000

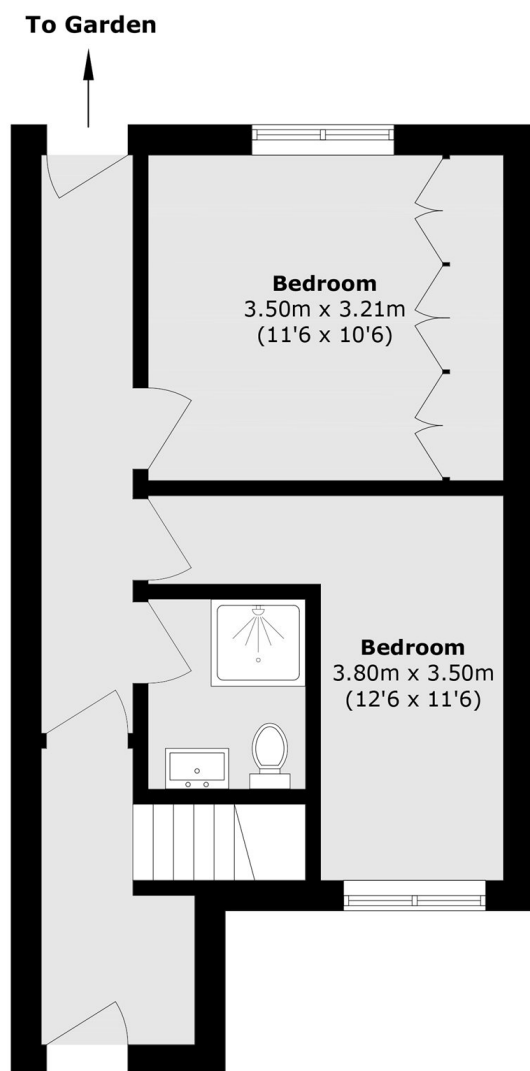
A beautifully presented split-level period conversion, ideally positioned on the border of Islington and Hackney. This property offers two well-proportioned double bedrooms and a stunning open-plan kitchen/reception room, featuring skylights that allow an abundance of natural light to pour into the space.

The vibrant array of restaurants, bars and independent shops along Kingsland High Street are just a short walk away, while the popular destinations of Upper Street, Broadway Market, London Fields and Church Street, Stoke Newington are all within easy reach. Dalston Junction (0.1mi) / Dalston Kingsland (0.3) stations are both a short walk away and provide routes around the city.

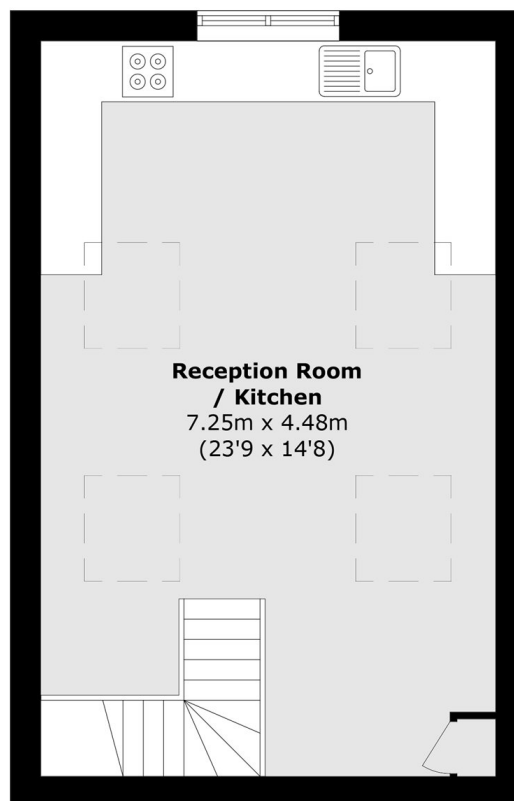
### Features

Two Bedrooms  
Open-Plan Living  
Modern Interiors  
Period Conversion  
Split Level

# Balls Pond Road, London, N1



**Ground Floor**



**First Floor**

Total area (approx.): 67.4 sq. m (725.4 sq. ft)