



## Lodge Place, Widnes

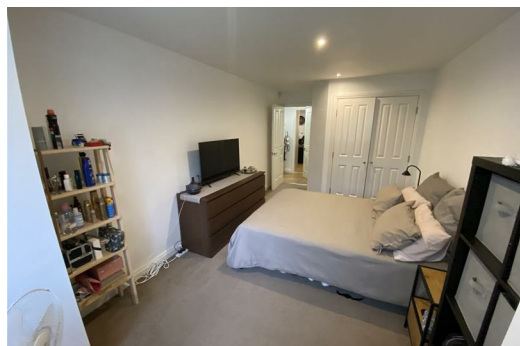
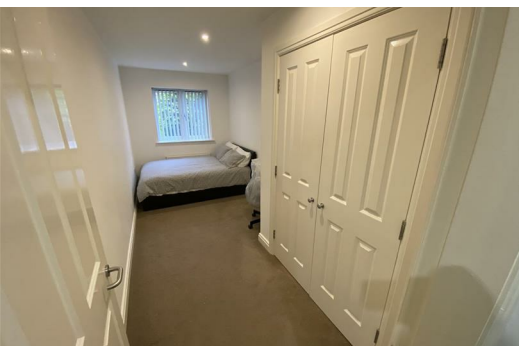
£895 PCM

Welcome to this beautifully presented two-bedroom apartment situated in the heart of Widnes, an ideal property for both students and young professionals.

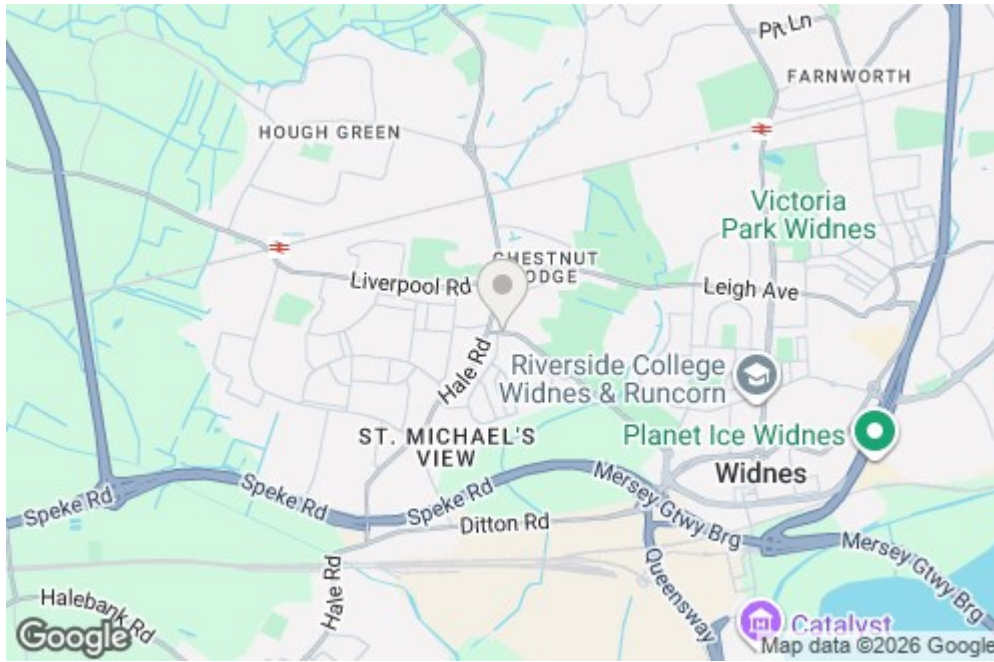
As you step into the ground floor apartment, you'll be impressed by the elegant open-plan kitchen living area, adorned with modern built-in appliances and ample storage space. Moving along the hallway, you'll discover two bright and airy bedrooms, offering a comfortable retreat. Completing the apartment is a tastefully tiled four-piece bathroom, adding to the overall convenience and charm.

Lodge Place boasts a prime location, providing easy access to Widnes town centre, excellent public transport options, and convenient motorway links. Whether you're a student or a young professional, this property offers the perfect blend of comfort, style, and accessibility.

\*Available 11th June 2026\* 12 month tenancy. Council Tax Band B. Deposit £985.



12 Lodge Place, Widnes, WA8 8AA



Energy Efficiency Rating		Environmental Impact (CO <sub>2</sub> ) Rating	
Current	Potential	Current	Potential
82	82	B	B
81-82	83-84	C	C
79-80	85-86	D	D
77-78	87-88	E	E
75-76	89-90	F	F
73-74	91-92	G	G