

# KE



## 20 South Road, Herne Bay, Kent, CT6 5AR

£1,500 Per Month

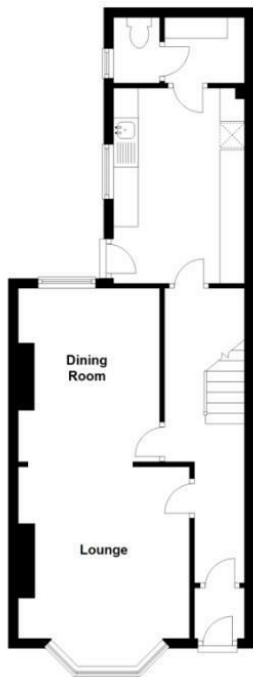
- Set Over Three Floors
- Three Double Bedrooms
- Bathroom With Bath And Separate Shower Cubicle
- Great, Central Location
- Spacious Accommodation
- Modern Interior

106 High Street, Kent, CT6 5LE  
01227 389998

[lettings@kimberestates.co.uk](mailto:lettings@kimberestates.co.uk)  
[www.kimberestates.co.uk](http://www.kimberestates.co.uk)

### Split Level Ground Floor

Approx. 47.7 sq. metres (513.2 sq. feet)



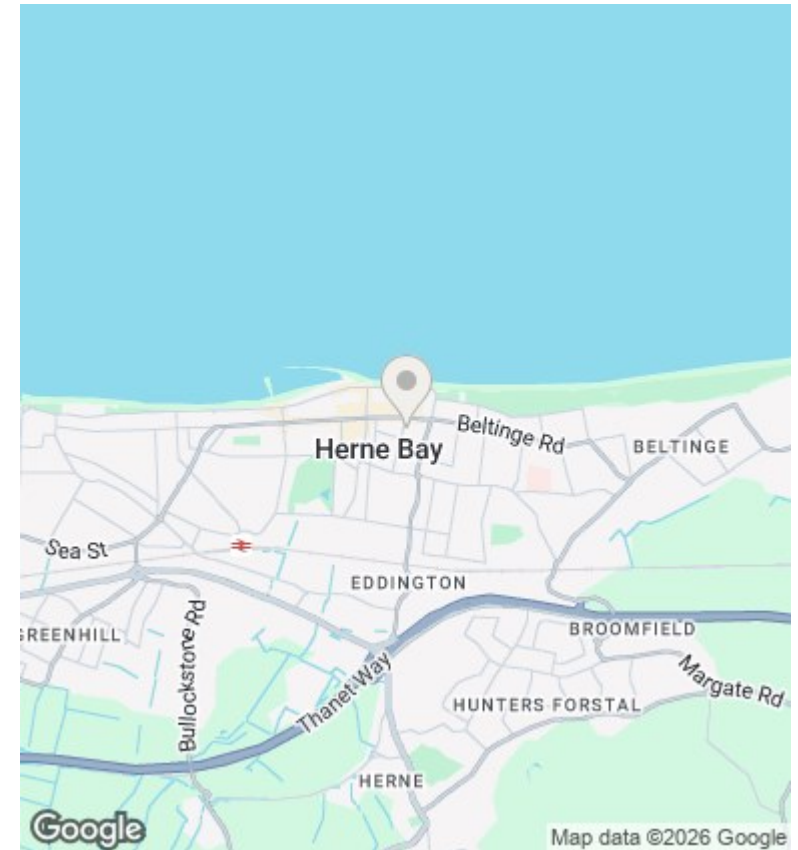
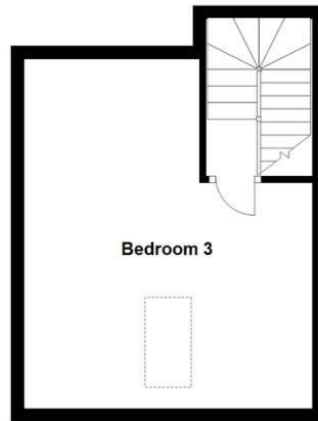
### Split Level First Floor

Approx. 46.7 sq. metres (502.8 sq. feet)



### Split Level Second Floor

Approx. 24.8 sq. metres (266.8 sq. feet)



## Viewings

Viewings by arrangement only. Call 01227 389998 to make an appointment.

## Council Tax Band

C

## EPC Rating:

D

Energy Efficiency Rating		
	Current	Potential
Very energy efficient - lower running costs		
(92 plus) <b>A</b>		
(81-91) <b>B</b>		<b>81</b>
(69-80) <b>C</b>		
(55-68) <b>D</b>	<b>55</b>	
(39-54) <b>E</b>		
(21-38) <b>F</b>		
(1-20) <b>G</b>		
Not energy efficient - higher running costs		
<b>England &amp; Wales</b>	EU Directive 2002/91/EC	