



Guide Price
£750,000

Freehold

5x  3x  1x 

**Grasmere Gardens,
Horsham, West Sussex,
RH12**

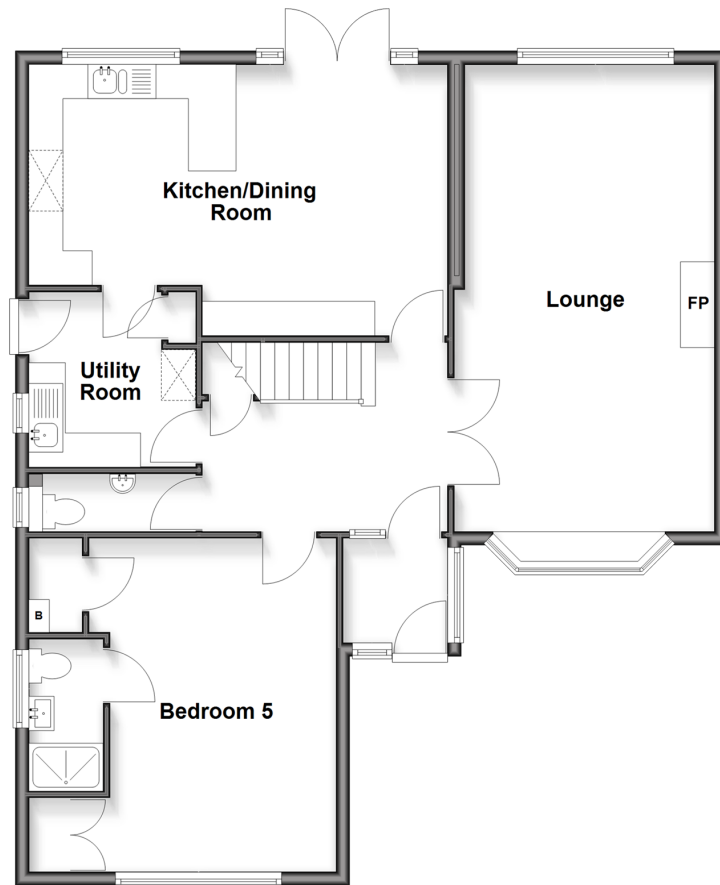
OVER 60?

Secure this property
for up to **59% less!**

cubitt&west
Helping you move forwards

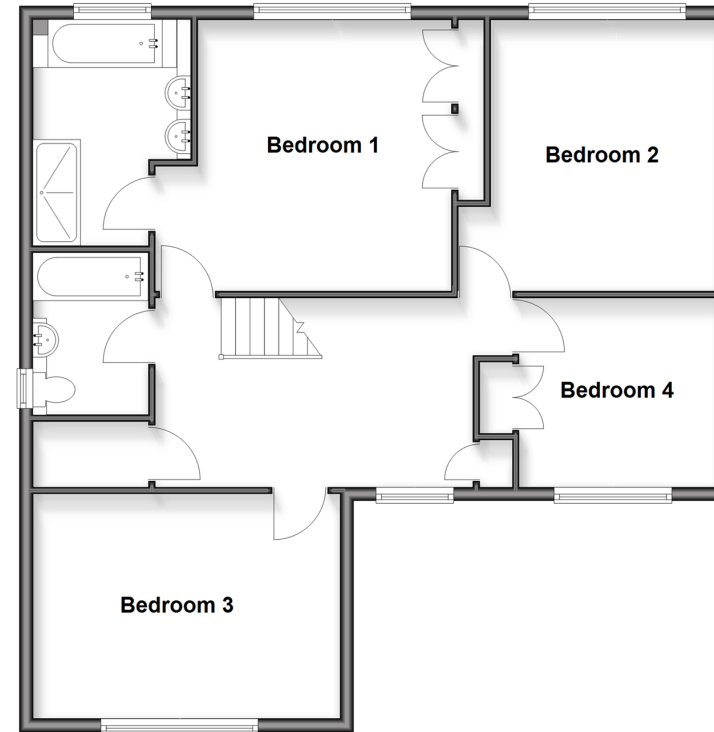
Ground Floor

Approx. 95.1 sq. metres (1024.0 sq. feet)



First Floor

Approx. 86.3 sq. metres (928.9 sq. feet)



Accommodation

GROUND FLOOR

Entrance Porch

Entrance Hall

Cloakroom

Lounge: 22'5 x 12'6 (6.84m x 3.81m)

Bedroom 5: 16'11 x 10'10 (5.16m x 3.30m)

En Suite Shower Room: 7'3 x 3'0 (2.21m x 0.92m)

Utility Room: 8'5 x 8'4 (2.57m x 2.54m)

Kitchen/Dining room: 21'2 x 13'1 (6.46m x 3.99m)

FIRST FLOOR

Galleried Landing

Bedroom 1: 13'0 x 11'11 up to fitted wardrobes (3.97m x 3.63m)

En Suite Shower Room: 11'3 x 7'8 (3.43m x 2.34m)

Bathroom: 7'9 x 5'6 (2.36m x 1.68m)

Bedroom 2: 15'3 x 10'7 (4.65m x 3.23m)

Bedroom 4: 10'10 up to fitted wardrobes x 9'2 (3.30m x 2.80m)

Bedroom 3: 13'1 x 11'11 (3.99m x 3.63m)

OUTSIDE

Front & Rear Garden

Off Road Parking



Main features

- A beautifully presented family home
- Situated in the popular Heritage Estate
- With no onward chain the property is ready to move into
- Garage recently converted into a 5th bedroom with en-suite
- Spacious accommodation arranged around a good size entrance hall and galleried landing



Nearest Schools

Primary Schools: St Robert Southwell Catholic Primary, Horsham 0.0 miles, Northolmes Junior School, Horsham 0.4 miles, All Saints CofE Primary 0.4 miles. Secondary Schools: Millais School 1.2 miles, Forest School, The 1.5 miles, Queen Elizabeth II Silver Jubilee School, 1.5 miles



Transport Information

Train Stations: Littlehaven 0.6 miles, Horsham 1.5 miles, Faygate 1.8 miles



Address

Grasmere Gardens, Horsham, West Sussex, RH12



Directions

For directions to this property please contact us.



cubitt&west
Helping you move forwards

Call Horsham Branch 01403 269268 ■ [cubittandwest.co.uk](https://www.cubittandwest.co.uk)



■ Legal advice should be taken to verify fixtures/fittings, planning, alterations and/or lease details ■ Appliances & services are untested, dimensions are approximate and floor plans are not to scale
■ Through a Homewise Home For Life Plan people aged 60+ can secure this property for up to 59% less, by purchasing a Lifetime Lease



21003357/20260115/SEH/CB