



Alton Road, SW15

£399,950

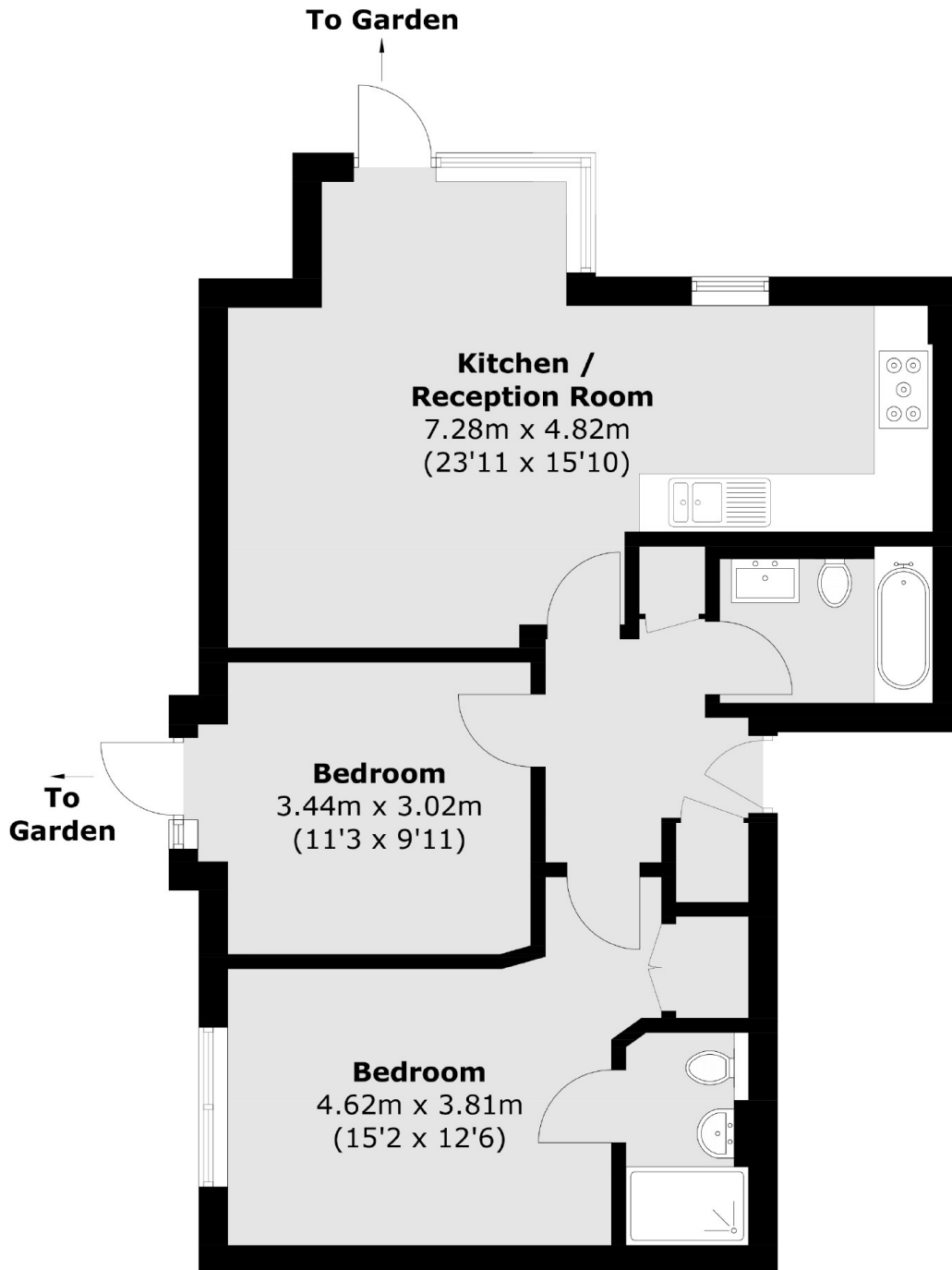
A bright and spacious two double bedroom apartment. There is a well proportioned open plan kitchen/ living room finished to an excellent standard. The property further benefits from Parking and outdoor space.

Alton Road runs off Roehampton Lane and is therefore a short walk from the wide open spaces of Putney Heath and Wimbledon Common. The flat is also a short walk from Roehampton High Street, which has an abundance of shops, including a local Waitrose. There are also numerous buses with swift access to Putney, Barnes, and beyond.

Features

- Allocated Parking
- Private Outdoor Space
- Two Bedrooms
- Two Bathrooms
- High Specification
- Open Plan Kitchen Living area

Alton Road, London, SW15



Total area (approx.): 64.1 sq. m (690.0 sq. ft)