

Arnolds | Keys



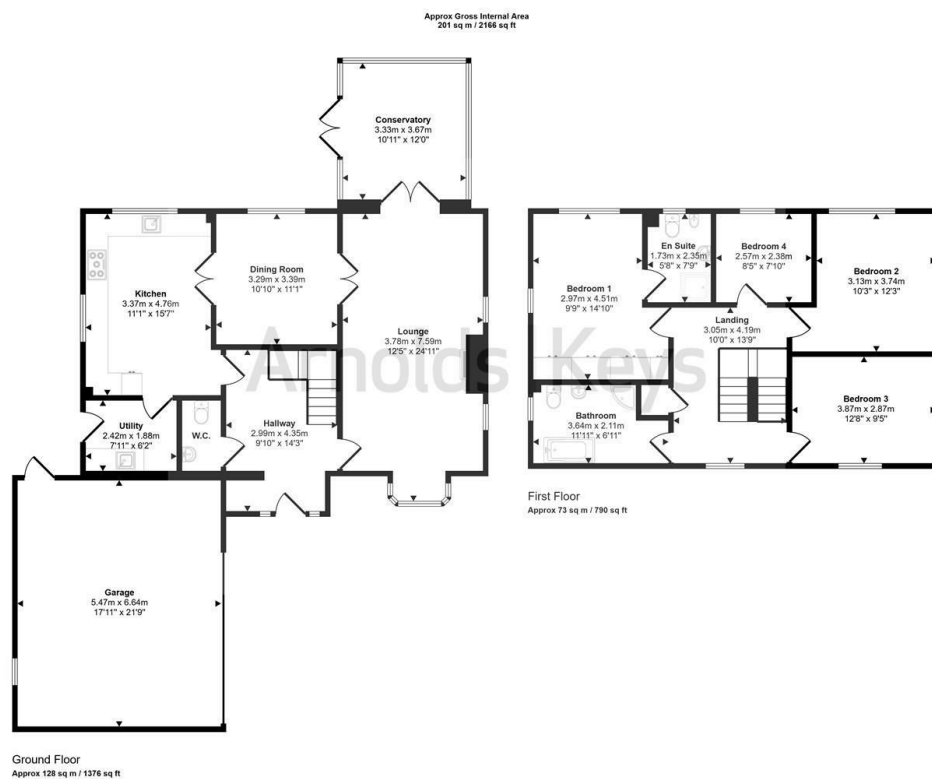
40 Kings Drive, Bradwell, Great Yarmouth, NR31 8TE

£1,450 Per Calendar Month

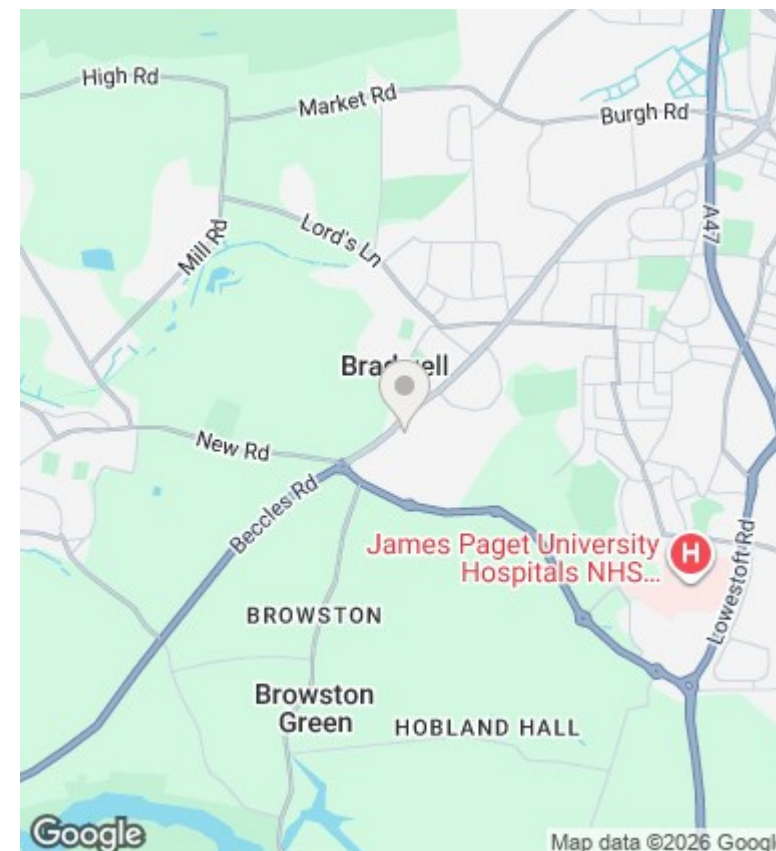
- Substantial Detached House
- Gas Central Heating
- 12 month Let
- 2 Reception Rooms
- uPVC double glazing throughout
- EPC Rating C
- 4 Bedrooms
- Ample parking and double garage

25 King Street, Norwich, Norfolk, NR1 1PD
01603 216812

lettings@arnoldskeys.com
www.arnoldskeys.com



This floorplan is only for illustrative purposes and is not to scale. Measurements of rooms, doors, windows, and any items are approximate and no responsibility is taken for any error, omission or misstatement. Some of items such as bathroom suites are representations only and may not look like the real items. Made with Made Snappy 360.



Directions

Viewings

Viewings by arrangement only. Call 01603 216812 to make an appointment.

Council Tax Band

E

EPC Rating:

C

Energy Efficiency Rating		
	Current	Potential
Very energy efficient - lower running costs		
(92 plus) A		
(81-91) B		
(69-80) C	78	
(55-68) D		
(39-54) E		
(21-38) F		
(1-20) G		
Not energy efficient - higher running costs		
England & Wales		
EU Directive 2002/91/EC		

25 King Street, Norwich, Norfolk, NR1 1PD
01603 216812

lettings@arnoldskeys.com
www.arnoldskeys.com