



Padua Road, SE20 | £525,000

02087029999

newhomes@pedderproperty.com

pedder
NEW HOMES

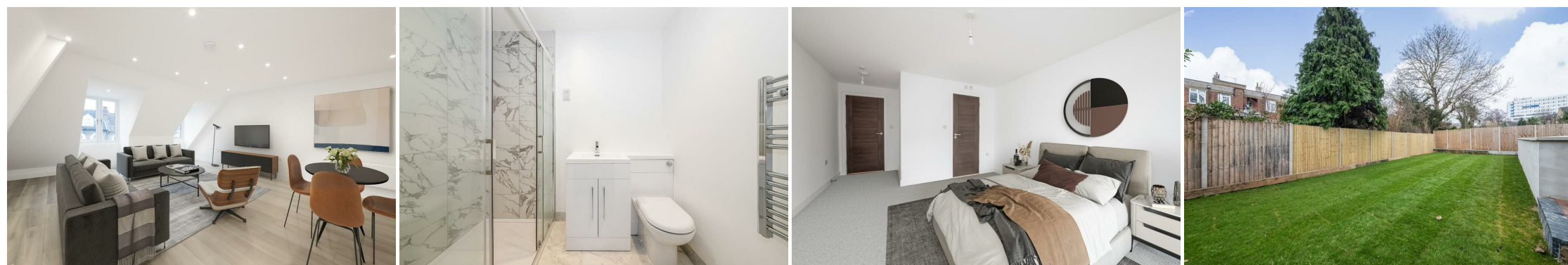


In General

- New build development
- Duplex apartments
- Private garden
- Off-street parking
- Overground line
- 10 year build warranty
- Open plan living space
- Spacious
- Close to Crystal Palace Park
- Quiet road

In Detail

A stunning new development of four luxury duplex apartments, each with it's own private garden and off-street parking.

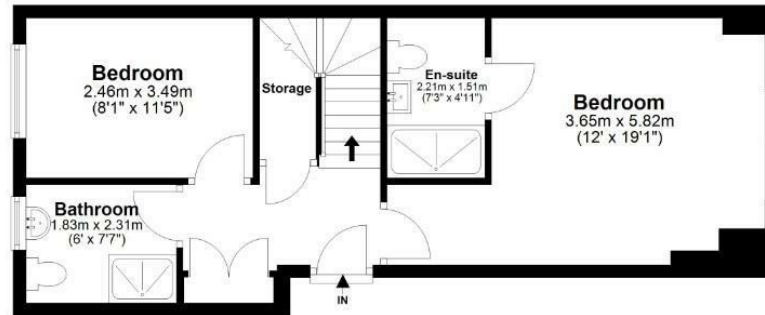


Floorplan



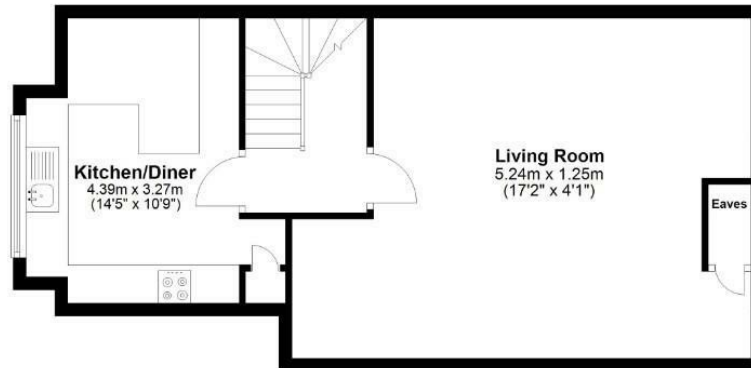
First Floor

Approx. 44.6 sq. metres (480.4 sq. feet)



Second Floor

Approx. 56.1 sq. metres (603.4 sq. feet)



Total area: approx. 100.7 sq. metres (1083.9 sq. feet)

Copyright www.pedderproperty.com 2024. These plans are for representation purposes only as Defined by RICS - Code of Measuring Practice. Not drawn to scale. windows and door measurements are approximate. please check dimensions, shapes and compass bearings before making any decisions reliant upon them.

Plan produced using PlanUp.

Energy Efficiency Rating		Current	Potential
Very energy efficient - lower running costs			
102 plus) A			
81-101) B			
69-80) C		79	79
55-68) D			
39-54) E			
21-38) F			
1-20) G			
Not energy efficient - higher running costs			
England & Wales	EU Directive 2002/91/EC		

Pedder Property Ltd trading as Pedder for themselves and for the vendor/landlord of this property whose agents they are, give notice that (1) these particulars do not constitute any part of an offer or contract, (2) all statements contained within these particulars are made without responsibility on the part of Pedder or the vendor/landlord, (3) whilst made in good faith, none of the statements contained within these particulars are to be relied upon as a statement of representation or fact, (4) any intending purchaser/tenant must satisfy him/herself by inspection or otherwise as to the correctness of each of the statements contained within these particulars, (5) the vendor/landlord does not make or give either Pedder or any person in their employment any authority to make or give representation or warranty whatsoever in relation to this property.