



**8 Pengwern Court, Longden Road, Shrewsbury, SY3 7JE**

1 bedroom ground floor apartment — £110,000 Leasehold

## 8 Pengwern Court, Longden Road, Shrewsbury, SY3 7JE

Coopergreenpooks.co.uk

£110,000 Leasehold — 1 bedroom ground floor apartment

sales@cgpooks.co.uk

This well-designed and improved ground floor apartment occupies a fantastic position within a popular purpose-built retirement development, benefiting from a Juliette balcony and lovely views over communal gardens and towards the Quarry Park. Pengwern Court is conveniently situated in a sought-after residential area, a stone's throw from Coleham's excellent range of amenities and just a short walk from the town centre over the Greyfriars Bridge.

### KEY FEATURES

- Neatly kept communal entrance hall, telephone intercom system, and lift access to all floors – this property is accessed via the ground floor from the car park side, or lower ground floor from Coleham side
- Private inner hallway with useful built-in store cupboard, which has additional shelving
- Lovely open plan living/dining room with a feature fireplace and Juliette balcony offering views over the communal gardens, towards the Quarry Park and River Severn
- Re-fitted kitchen, installed within the last 5 years, complete with a range of units and integrated appliances, including a fridge/freezer that is only 6 months old
- Good-sized double bedroom with built-in wardrobe
- Re-fitted bathroom, installed within the last 2 years, with a specialist accessible walk-in bath and shower, and very practical vanity unit. There is also a large airing cupboard that houses the hot water tank and is shelved for excellent storage
- Impressive landscaped communal grounds with seating areas for residents to enjoy
- There is a resident house manager and 24-hour emergency care line response system
- Easy access to the resident's lounge, from which many social events are run by an active community within Pengwern Court
- There is also a resident and visitor car park, and a well-equipped laundry room
- Additional guest suite accommodation for visitors - this is typical of a McCarthy and Stone development, and any residents are able to stay at other developments around the country for a minimal charge
- Sold vacant with no upward chain

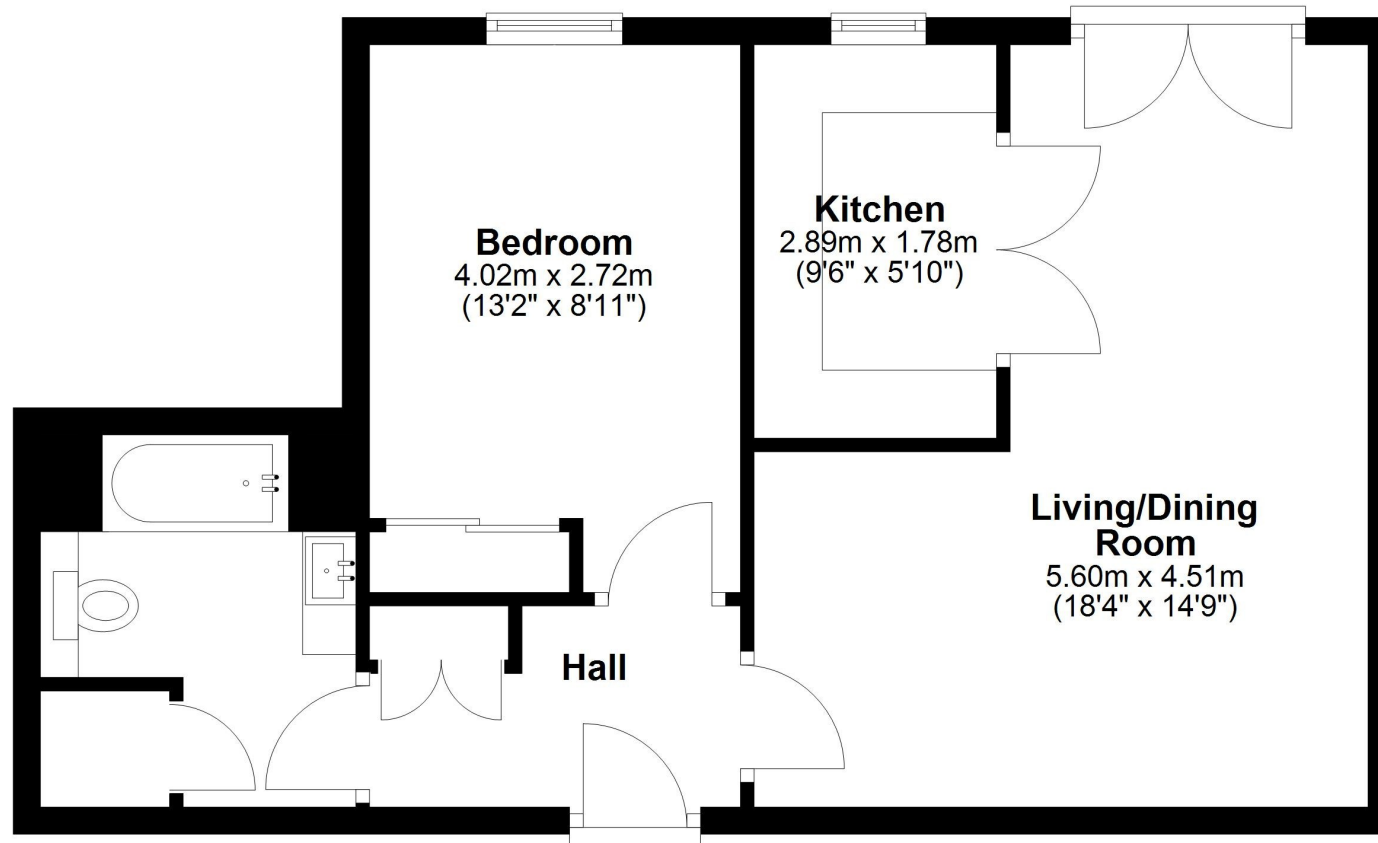


£110,000 Leasehold — 1 bedroom ground floor apartment

sales@cgpooks.co.uk

## Ground Floor

Approx. 47.6 sq. metres (512.8 sq. feet)



Total area: approx. 47.6 sq. metres (512.8 sq. feet)







# 8 Pengwern Court, Longden Road, Shrewsbury, SY3 7JE

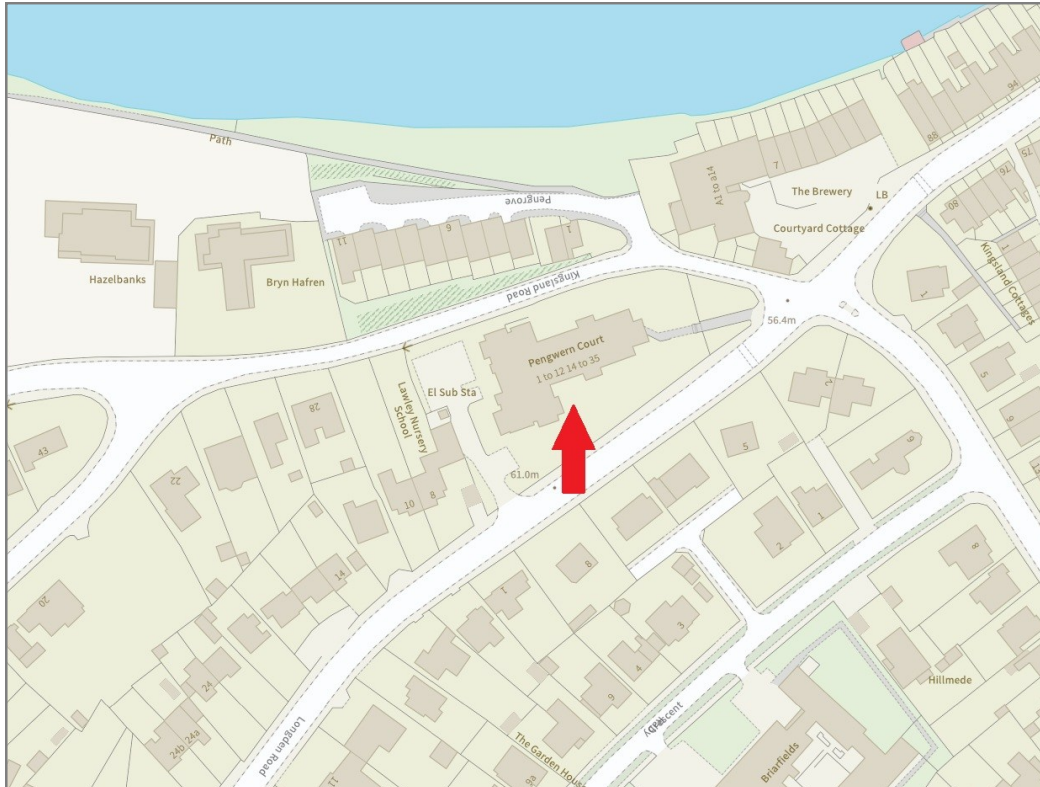
£110,000 Leasehold — 1 bedroom ground floor apartment

sales@cgpooks.co.uk

rightmove 

 OnTheMarket.com

 **RICS**  
Regulated by RICS



**BOUNDARIES NOT CONFIRMED**

Local Authority  
Council Tax  
EPC Band  
Services

**Shropshire Council**  
**Band B**  
**Band B**  
**Mains water, electricity and drainage are connected.**  
**Electric heating.**

Tenure  
Length of lease  
Service charge  
Ground rent

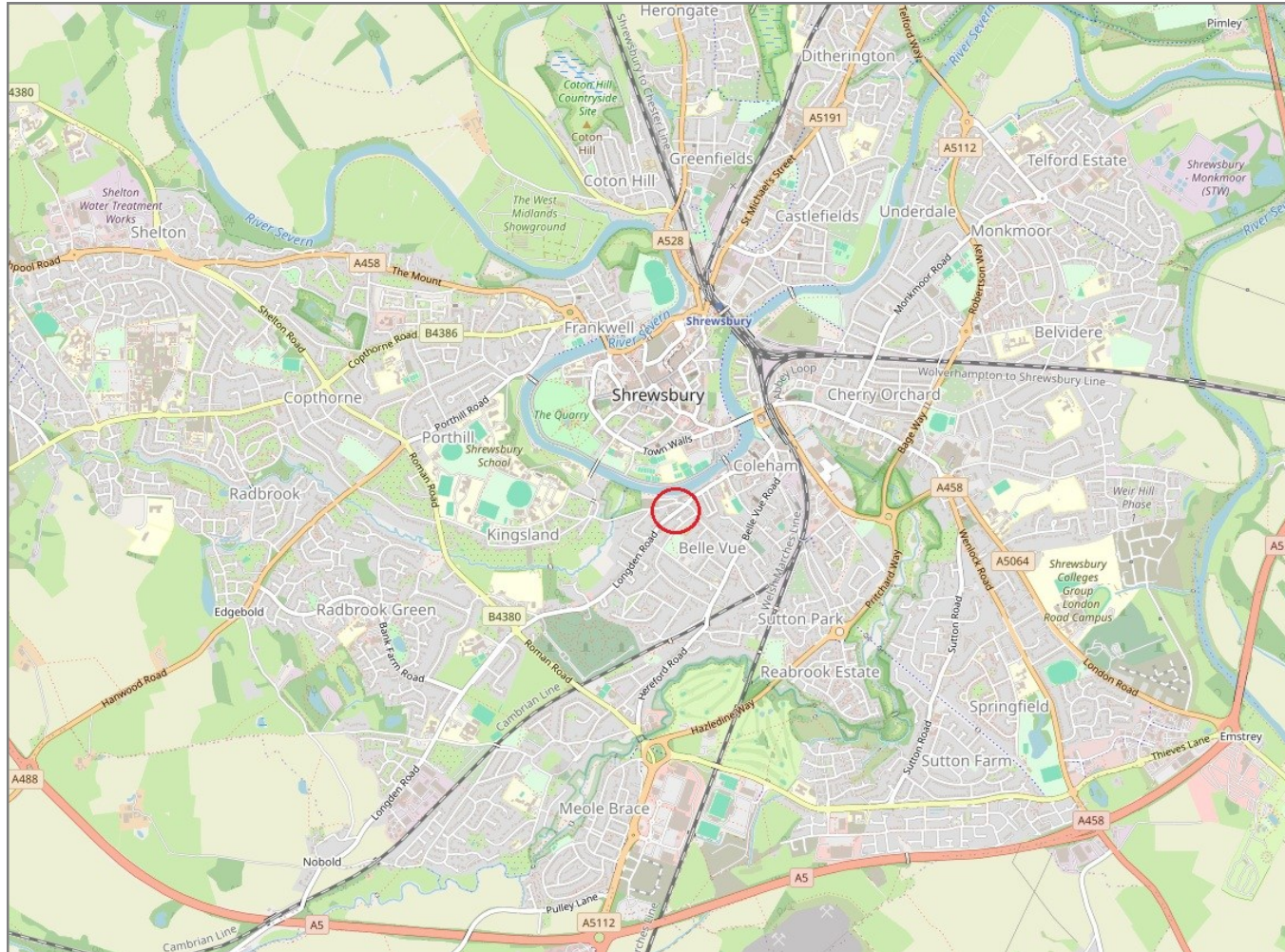
**Leasehold**  
**125 years from 1998**  
**£4471.52 per annum**  
**£559.86 per annum**

# 8 Pengwern Court, Longden Road, Shrewsbury, SY3 7JE

Coopergreenpooks.co.uk

£110,000 Leasehold — 1 bedroom ground floor apartment

sales@cgpooks.co.uk



**IMPORTANT NOTICE:** Cooper Green Pooks for themselves and for the lessors or vendors of this property whose agents they are give notice that: 1 No appliances, services or service installations have been tested and no warranty as to suitability or serviceability is implied. Any prospective purchaser or lessee is advised to obtain verification from their surveyor or solicitor. 2. The particulars are set out as a general outline only for the guidance of the intended purchasers or lessees and do not constitute, nor constitute part of, an offer or contract. 3. All descriptions, reference to condition and necessary permissions for use and occupation and other details are given in good faith and are believed to be correct but any intending purchasers or lessees should not rely on them as statements or representation of fact but satisfy themselves by inspection or otherwise as to the correctness of each of them. 4. No person in the employment of Cooper Green Pooks has any authority to make or give any representation or warranty whatsoever in relation to this property. 5. All rentals and prices are quoted exclusive of Stamp Duty, legal and surveyors fees and any other associated purchasers or lessees costs. 6. Floor plans are indicative only and should not be relied on. 7. The plan showing the boundary of the property is indicative only and has not been checked against the legal title so should not be relied on. 8. All dimensions, floor areas and site areas are only approximate and should not be relied on. Dimensions are generally maximum room dimension.