



**Porteus Place, SW4**

£1,250,000

**Dexters**



## Porteus Place, SW4

Porteus Place is a two bedroom, two bathroom house located in the gated development Porteus Place. The property opens into a spacious dual-aspect entrance hall featuring a utility cupboard, cloakroom and downstairs WC. The entire ground floor is dedicated to an impressive open-plan kitchen and reception space, filled with natural light and complemented by a contemporary fitted kitchen. The layout is ideal for entertaining, with direct access to a private courtyard. Stairs from the hallway lead to the first floor, where there is a generous principal bedroom with en-suite bathroom, alongside a second bedroom and separate shower room. The property further benefits from an underground parking space and on-site Concierge.

Porteus Place enjoys an exceptional position just moments from the open green spaces of Clapham Common and its Northern Line Underground station, providing quick and convenient access into the City and West End. Clapham Old Town is also only a short stroll away, offering an excellent selection of boutique shops, cafés, restaurants, bars and fitness studios, creating a vibrant yet village-like atmosphere right on your doorstep.

### Features

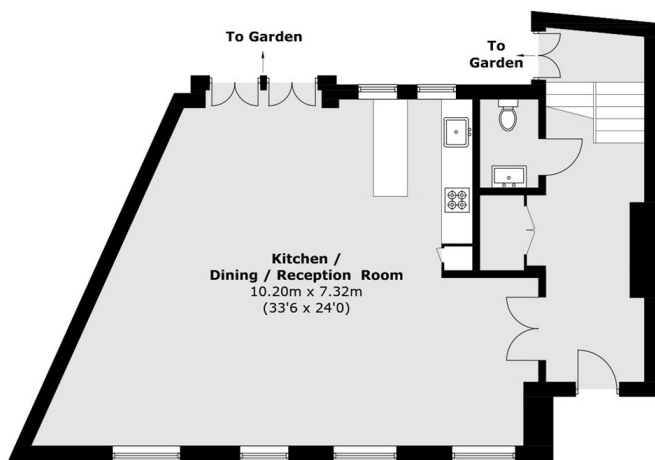
- Security Gated Development
- Double Height Entrance Hall
- Concierge
- Downstairs WC
- Underground Parking
- Private Courtyard



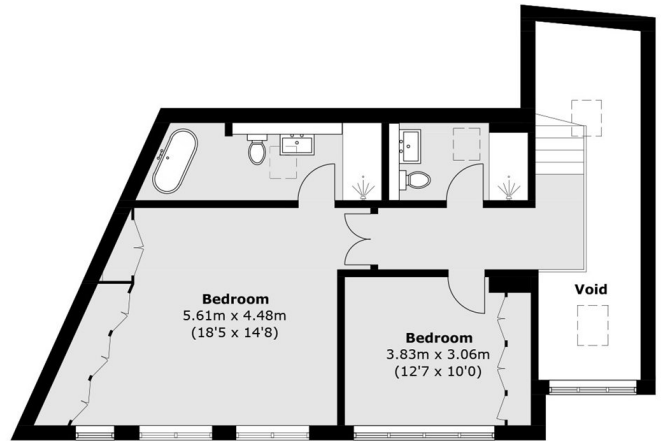




# Porteus Place, London, SW4



**Ground Floor**



**First Floor**

Total area (approx.): 137.4 sq. m (1,479.0 sq. ft)  
(Excluding Void)