



# HOLLAND PARK AVENUE, W11

£625,000

Two Bedrooms  
Communal Garden Access  
Prime Location  
Period Building  
Lower Ground Floor  
Contemporary Kitchen

@marshandparsons  
marshandparsons.co.uk

MARSH &  
PARSONS

# ABOUT THE PROPERTY

A well presented and beautifully proportioned two bedroom garden apartment, set within an elegant period building in the heart of Holland Park.

Holland Park is renowned for its outstanding selection of local amenities, including acclaimed restaurants, bars and cafés. Westfield shopping and entertaining complex is very close by, as is Holland Park Central Line tube.







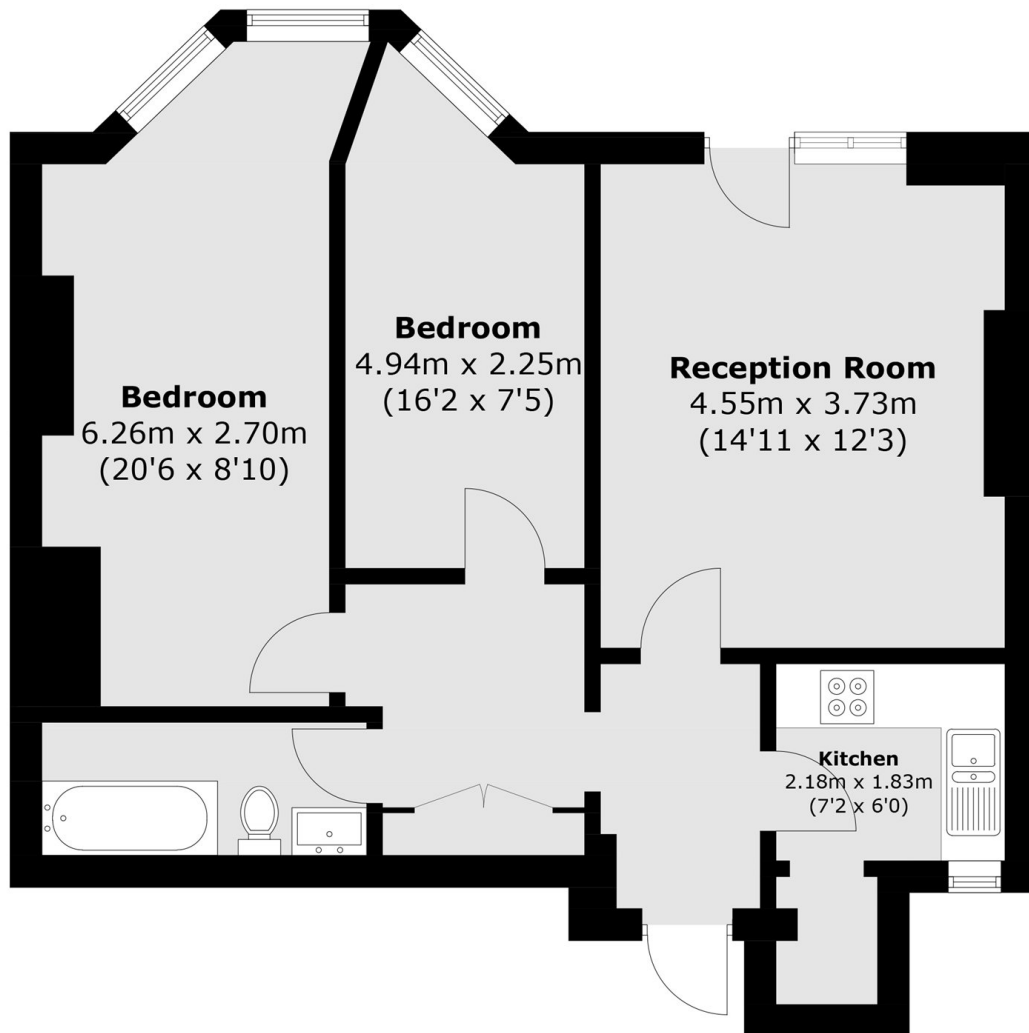
# FURTHER DETAILS

The accommodation comprises a welcoming entrance hall, a superb sitting/dining room with direct access to the attractive communal gardens, and a sleek, well-appointed contemporary kitchen. The principal bedroom is a particularly good size, featuring a charming bay window and an extensive range of fitted wardrobes and storage. The guest bedroom is also a good size. To the rear, residents enjoy access to well maintained communal gardens.



# STEP INSIDE

## HOLLAND PARK AVENUE



Total area (approx.): 64.3 sq. m (692.1 sq. ft)

**Holland Park**  
020 7605 6890

Energy Rating: C We aim to make our particulars both accurate and reliable. However, they are not guaranteed; nor do they form part of an offer or contract. If you require clarification on any points then please contact us, especially if you're traveling some distance to view. Please note that appliances and heating systems have not been tested and therefore no warranties can be given as to their good working order

**MARSH &  
PARSONS**