

BUCKS

PROPERTY AGENTS



2 Old School Mews Violet Hill Road, Stowmarket, IP14 1ND

Price Guide £120,000

- Two Bedrooms
- Cloakroom
- Sealed Unit Double Glazed
- Stair Lift
- Private and Communal Gardens
- Retirement Property/Over 55`s
- Shower Room
- Night Storage Heaters
- Vacant Possession And No Upward Chain
- Residents and Visitors Parking

2 Old School Mews Violet Hill Road, Stowmarket IP14 1ND

Located in the tranquil setting of Old School Mews on Violet Hill Road, Stowmarket, this delightful terraced house is an ideal retirement property for those aged over 55. Offering a perfect blend of comfort and convenience, this charming residence features two well-proportioned bedrooms and two bathrooms, including a modern shower room designed for ease of access. As you enter, you are welcomed into a spacious reception room that exudes warmth and light, enhanced by elegant French doors that open directly onto a private small garden. This outdoor space provides a serene retreat, perfect for enjoying a morning coffee or tending to a few plants. Additionally, residents can take advantage of the communal garden, fostering a sense of community among neighbours. The property is thoughtfully designed with accessibility in mind, featuring a stairlift for ease of movement. Located in a peaceful cul de sac, this bungalow offers a quiet lifestyle while still being conveniently close to local amenities and services. This property offers vacant possession with no upward chain, providing you with the flexibility to move in hassle free.

This is a wonderful opportunity for those seeking a comfortable and secure living environment in a friendly community. With its appealing features and prime location within Stowmarket offering something for everyone from local, individual and traditional shops, cafes, restaurants, leisure centre, cinema, medical facilities, schools, railway station with main lines to London, Norwich, Bury St Edmunds, Cambridge and Ipswich. This bungalow is sure to attract interest from discerning buyers looking for a retirement home that truly feels like a sanctuary.



Council Tax Band: C



Entrance Hall

With stairs leading to first floor, understairs cupboard and night storage heater.

Sitting Room

With two windows to rear and French doors leading to outside filling the room with natural light, TV point, understairs storage cupboard and night storage heater.

Kitchen

With window to front, range of high and low units, tiled splashbacks, cooker with extractor hood and fan, space for fridge freezer, washing machine and vinyl floor.

Cloakroom

With window to front, low level W/C, pedestal basin, loft access and vinyl floor.

First Floor Landing

With shelved airing cupboard housing hot water tank and loft access.

Bedroom One

With window to rear, fitted wardrobes and night storage heater.

Bedroom Two

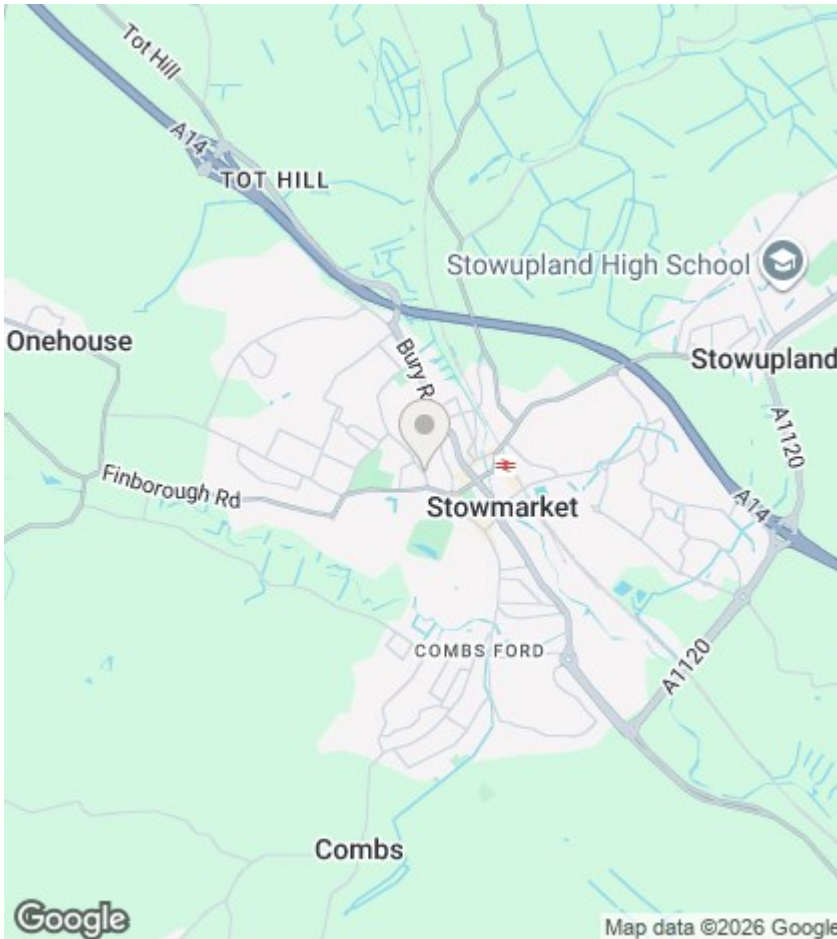
With window to front, built-in cupboard and night storage heater.

Shower room

With window to rear, walk in shower, low level W/C, pedestal basin, tiled splashbacks, vinyl floor and heated towel rail.

Outside

To the front of the property is a paving stone area, brick built storage shed, gravel area and communal area for bins. To the rear of the property is a paving stone area giving access to communal gardens.



Directions

Market Place, Stowmarket IP14 1DT, UK Head north on Market Pl towards Tavern St/B1115 Turn right at the 1st cross street onto Station Rd W/B1115 Turn left onto Gipping Way/A1308 Go through 1 roundabout Turn left onto Fairfield Hill Turn left onto Violet Hill Rd Turn left onto Old School Mews Destination will be on the left Arrive: Stowmarket IP14 1ND, UK

Viewings

Viewings by arrangement only.
Call 01449614700 to make an appointment.

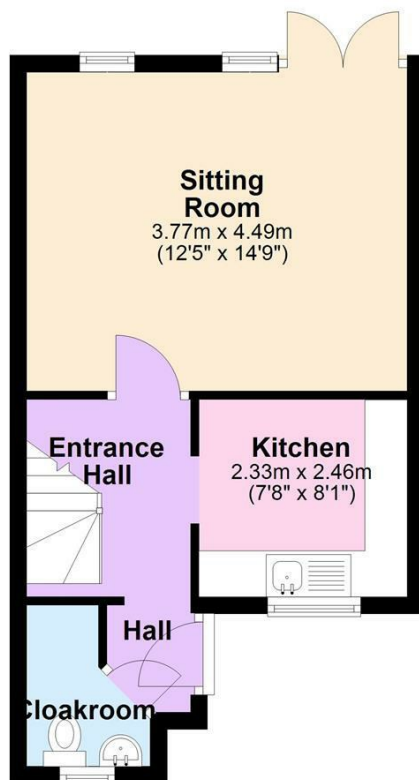
EPC Rating:

D

Energy Efficiency Rating		Current	Potential
Very energy efficient - lower running costs			
(92 plus) A			
(81-91) B			89
(69-80) C			
(55-68) D		62	
(39-54) E			
(21-38) F			
(1-20) G			
Not energy efficient - higher running costs			
England & Wales		EU Directive 2002/91/EC	

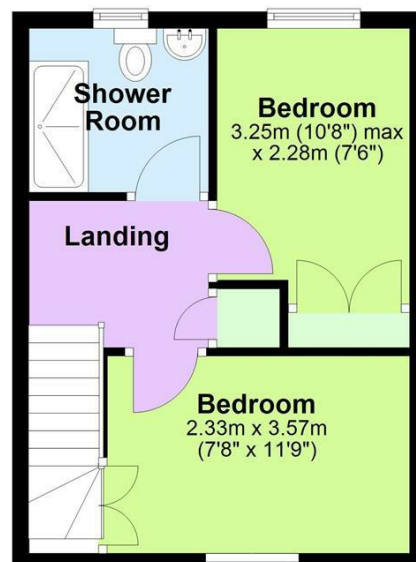
Ground Floor

Approx. 31.4 sq. metres (338.1 sq. feet)



First Floor

Approx. 27.8 sq. metres (299.7 sq. feet)



Total area: approx. 59.3 sq. metres (637.8 sq. feet)