



## Varsity Drive, TW1

£1,650 Per calendar month

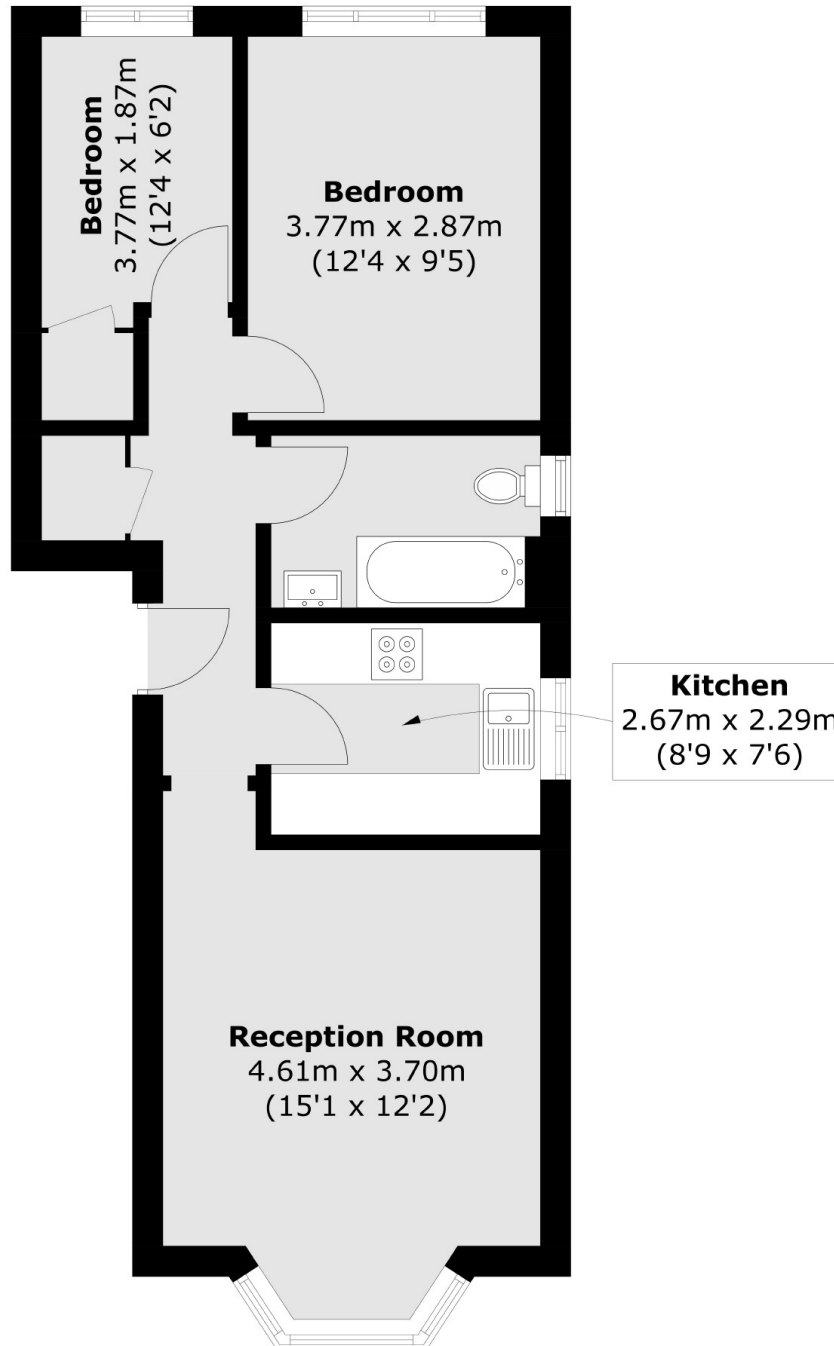
This spacious top floor apartment is situated in a popular residential development. The property includes a large living room, built-in storage, a fully refurbished bathroom, two double bedrooms and allocated parking.

Varsity Drive is a popular development offering easy access to Twickenham town centre via its many transport links and Twickenham mainline station with its fast trains to London Waterloo is just 0.6 miles away.

### Features

- Top Floor
- Two Double Bedrooms
- Allocated Parking
- Refurbished Bathroom
- Popular Development
- Communal Gardens

# Varsity Drive, Twickenham, TW1



Total area (approx.): 51.1 sq. m (550.0 sq. ft)