



The Ridings  
Forest Town MANSFIELD

burchell  
edwards

# The Ridings Forest Town MANSFIELD NG19 0QF

for sale offers in the region of  
**£230,000**



## Property Description

Situated on The Ridings in the popular area of Forest Town, this modern and well-presented detached bungalow offers well laid out accommodation throughout. Fully re-wired, the property is ideal for buyers seeking a ready to move into home.

Internally, the accommodation comprises a welcoming entrance hall, a stylish lounge with feature wall and French doors opening onto the garden, a contemporary fitted kitchen with integrated appliances, two well-proportioned bedrooms and a modern bathroom suite.

Externally, the property benefits from a gravelled frontage with a driveway providing ample off-street parking, leading to double gates and a detached garage. To the rear, the garden has been thoughtfully designed for low maintenance and entertaining, featuring a covered decking area, generous gravelled sections, planted borders, a small lawn and established hedging offering privacy.

This is an excellent opportunity to acquire a detached bungalow in a sought-after location, ideal for a range of buyers.

## Entrance Hall

Entered via a UPVC door from the side elevation, featuring LVT flooring, wall mounted radiator and useful storage cupboard housing the boiler.

## Lounge

A stylish reception room with LVT flooring, a feature wall incorporating strip lighting and an electric wall mounted fireplace. Double glazed French doors and windows open to the rear, with a wall mounted radiator.

## Kitchen

Fitted with a range of matching wall and base units, marble worktops and splashback, and integrated appliances including an induction hob, double electric oven, fridge freezer, washing machine and microwave. Additional features include an inset sink and drainer, cooker hood, LVT flooring, wall mounted radiator and UPVC door to the garden.

## Bedroom One

A well-proportioned double room with carpeted flooring, wall mounted radiator and a double glazed bay window to the front.

## Bedroom Two

With carpeted flooring, wall mounted radiator, double glazed window to the front and loft access.

## Bathroom

Fitted with a three-piece suite comprising bath with waterfall shower over, wash hand basin and WC. Finished with vinyl flooring, wall panelling, wall mounted radiator, shaver points and a double glazed opaque window to the side.

## Externals

The front offers a gravelled area with a concrete driveway leading to double gates.

The rear garden is well presented and low maintenance, featuring a covered decking area ideal for seating and entertaining, leading onto a generous gravelled space with planted borders. There is also a small lawn, established hedging for privacy, and useful outbuildings for storage.

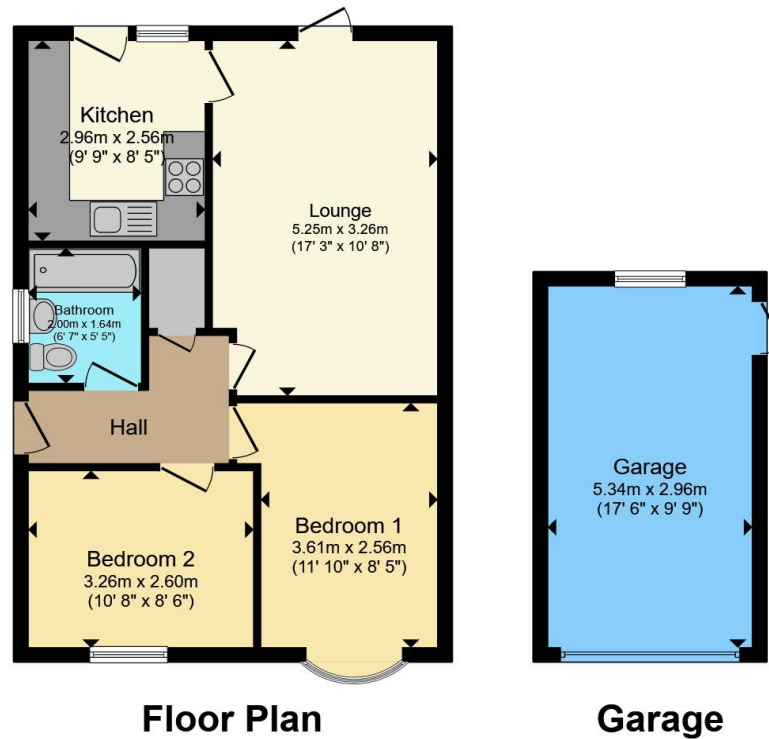
## Garage

Detached garage with up and over door, side access door to the garden, and benefiting from power and lighting.









Total floor area 69.3 m<sup>2</sup> (746 sq.ft.) approx

This floor plan is for illustrative purposes only. It is not drawn to scale. Any measurements, floor areas (including any total floor area), openings and orientation are approximate. No details are guaranteed, they cannot be relied upon for any purpose and they do not form part of any agreement. No liability is taken for any error, omission or misstatement. A party must rely upon its own inspection(s). Powered by [www.propertybox.io](http://www.propertybox.io)



To view this property please contact Burchell Edwards on

**T 01623 627727**  
**E [Mansfield@burchelledwards.co.uk](mailto:Mansfield@burchelledwards.co.uk)**

12 Albert Street  
 MANSFIELD NG18 1EB

EPC Rating: D Council Tax  
 Band: B

Tenure: Freehold

**check out more properties at [burchelledwards.co.uk](http://burchelledwards.co.uk)**



1. MONEY LAUNDERING REGULATIONS Intending purchasers will be asked to produce identification documentation at a later stage and we would ask for your co-operation in order that there will be no delay in agreeing the sale. 2. These particulars do not constitute part or all of an offer or contract. 3. The measurements indicated are supplied for guidance only and as such must be considered incorrect. Potential buyers are advised to recheck measurements before committing to any expense. 4. We have not tested any apparatus, equipment, fixtures, fittings or services and it is in the buyers interest to check the working condition of any appliances.

Burchell Edwards is a trading name of Connells Residential which is registered in England and Wales under company number 1489613, Registered Office is Cumbria House, 16-20 Hockliffe Street, Leighton Buzzard, Bedfordshire, LU7 1GN. VAT Registration Number is 500 2481 05.

**See all our properties at [www.burchelledwards.co.uk](http://www.burchelledwards.co.uk) | [www.rightmove.co.uk](http://www.rightmove.co.uk) | [www.zoopla.co.uk](http://www.zoopla.co.uk)**

Property Ref: MFD209765 - 0001