



BATH ROAD, SL1

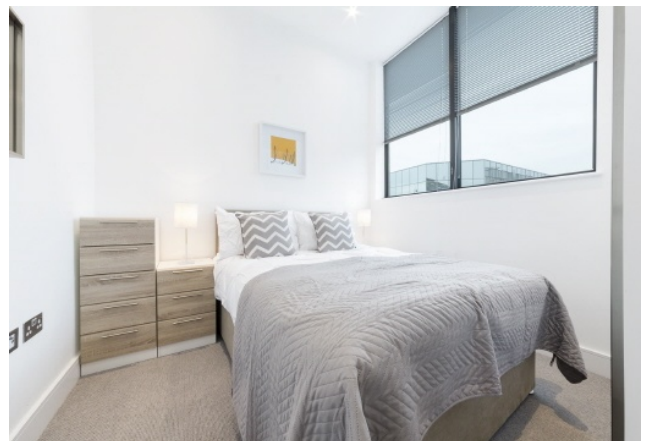
£1,350 pcm

Don't waste your time looking for properties - come and see this spectacular development in the heart of Slough. This stunning development will be fitted to Galliard Homes' premier luxury specification such as real oak strip engineered timber flooring and brushed metal finishes.

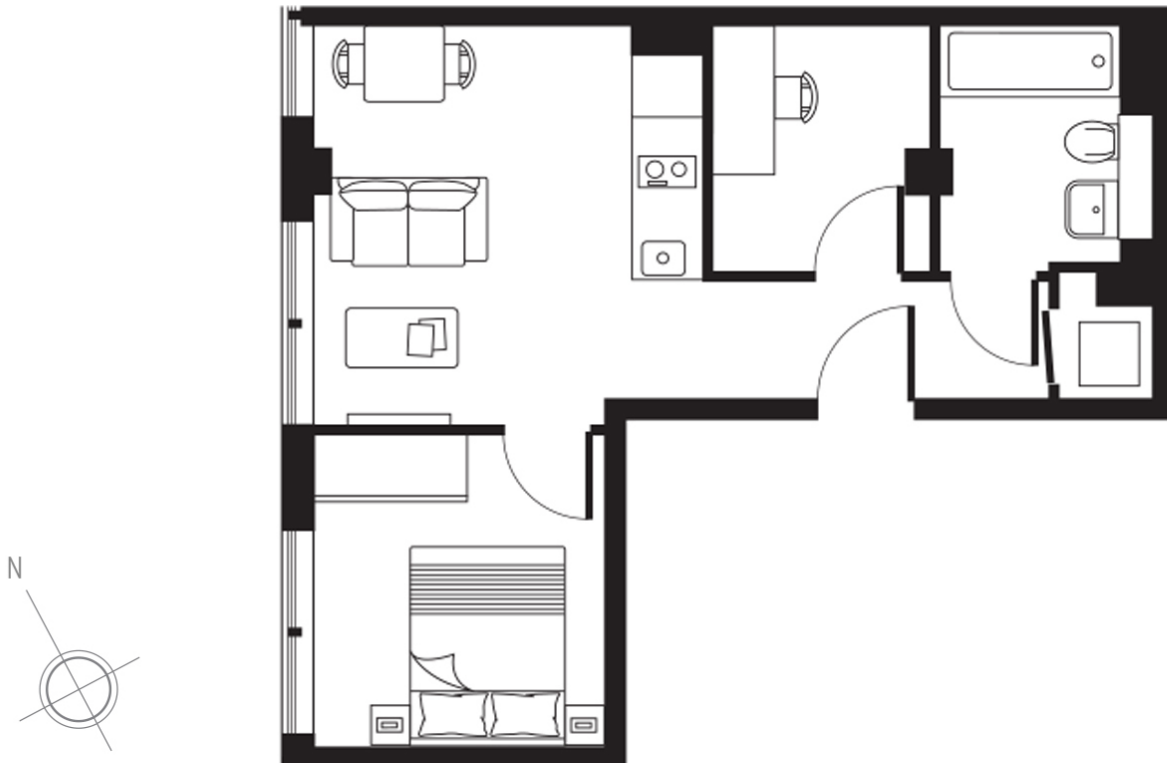


ABOUT THE HOME

Don







Approx area: 38.4 sq m / 413 sq ft

LiFE RESIDENTIAL

203 Trentham Court, Victoria
Road, London, W3 6BT
Sales: 020 3668 1112
Lettings: 020 3668 1111

Energy Rating: E. We aim to make our particulars both accurate and reliable. However they are not guaranteed; nor do they form part of an offer or contract. If you require clarification on any points then please contact us, especially if you're traveling some distance to view. Please note that appliances and heating systems have not been tested and therefore no warranties can be given as to their good working order.