



 3  4  2

**Wye Apartments Severn Quay, Chepstow**  
offers in excess of **£550,000**

 **peter  
alan**

01291 630876  
[chepstow@peteralan.co.uk](mailto:chepstow@peteralan.co.uk)



## About the property

Stunning executive style apartment offering spacious and versatile accommodation across two floors, located on Chepstow's scenic waterfront. This property is in immaculate condition having one previous owner from new and is decorated to a high standard throughout. The true selling point of this property along with its generous size and splendour is the outstanding outlook offered from the wrap around balcony with floor to ceiling windows creating panoramic scenic views of the riverside and beyond.

The property is fully equipped with modern comforts including underfloor heating, touch sense lighting, optional Alexa controlled lighting, thermostatically controlled heating and remote controlled blinds. Offered with NO ONWARD CHAIN. The open plan living area includes a contemporary, fully equipped kitchen featuring built in modern appliances. With three generous bedrooms across two floors this property is perfect for families, professionals or those looking to retire in comfort. Rising from the riverbank, this building was designed to stand out from the crowd!! For luxury living and stunning views, look no further - Contact us today to arrange your viewing!

## Accommodation

### Entrance Hall

A bright and welcoming space with doors leading through to Living space, Bedroom 2, D/S cloakroom/w.c. Storage room housing 'Nuairé' ventilation system and gas boiler for underfloor heating. Stairs leading to first floor with stair lift. Ceramic tiled flooring. Wall mounted touch sense light switches with optional Alexa activated controls. Wall mounted security keypad linked to external main entrance door.

### W.C

Fully tiled surround and flooring with high gloss finish, w.c. sink and vanity unit with touch sense lighted mirror over. Heated towel rail. Spotlights.

### Bedroom 2

11' 6" x 9' 10" ( 3.51m x 3.00m )  
Double bedroom with generous built in wardrobe space. Door leading to decked, wrap around balcony area with stunning views across the riverside. Carpeted. Ceiling spotlights. sensor light switches. Door to en-suite. Currently utilised as snug/office. A highly versatile space.

### En-Suite

8' 2" x 6' 7" ( 2.49m x 2.01m )  
Walk in shower, White suite comprising of w.c. sink and vanity unit with touch lighting mirror. High gloss finish. Spotlights

### Open Plan Living Area

14' 9" x 14' 1" ( 4.50m x 4.29m )  
Generous space allowing flexibility for lounge and dining. Ceramic tiled flooring throughout with underfloor heating. Floor to ceiling windows with impressive panoramic views of the riverside and beyond, doors leading to wrap around balcony area featuring non slip decking





and reinforced glass surround. Electric fitted blinds. Large understairs storage cupboard. Ceiling spotlights with dimmer and optional Alexa activation controls. Open plan kitchen area

### **Kitchen**

Contemporary High Gloss units with built in modern appliances to include, fridge freezer, double oven and combi microwave, dishwasher, washing machine, electric hob with extractor over. Stainless steel sink. Spotlights. open plan aspect forming part of the larger living space

### **Staircase With Oak Tread**

Leading to First floor landing

### **First Floor Landing**

Wood laminate flooring. doors leading to master bedroom with en-suite, bedroom 2, family bathroom and door to outside private terrace and seating area

### **Shower Room**

White suite comprising W.C, walk in shower, Hand wash basin with vanity surround and touch light mirror and wall mounted stainless steel mixer tap. Tiled. Ceiling spotlights



### **Main Bedroom With En-Suite**

14' 5" x 14' 1" ( 4.39m x 4.29m )  
Spacious King-size room with floor to ceiling windows offering stunning riverside views. electric fitted blinds. carpeted throughout. spotlights  
Designated Dressing room area featuring fitted and lighted wardrobes with pull out rails.  
Door to en-suite

### **En-Suite**

Frosted glass door. White suite comprising of bath, W.C, hand wash basin with vanity surround and touch light mirror over. Frosted windows. Heated towel rail.

### **Bedroom 3**

13' 5" x 9' 6" ( 4.09m x 2.90m )  
Carpeted throughout. door leading to private decked balcony area with riverside views. Built in high gloss wardrobes with lighting and pull out rail. Fitted blinds

### **Outside**

Private terrace decking area with safety glass balcony overlooking the riverside with views beyond.  
Approached via first floor landing and bedroom 2.  
Decked balcony on lower floor with impressive views of the riverside approached from open plan living area and bedroom 3



### **Parking**

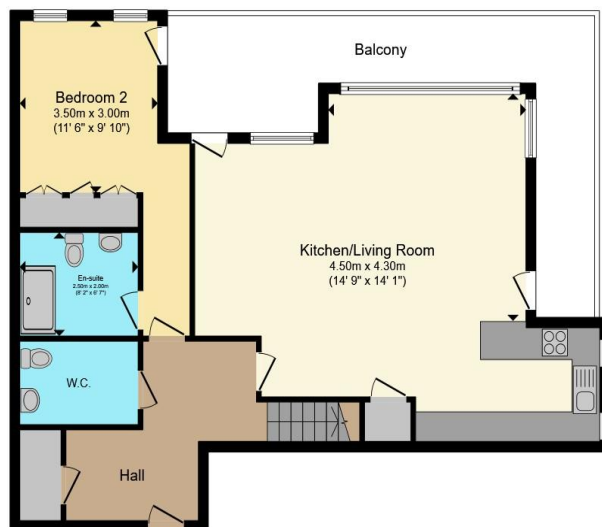
Private secure parking for 2 vehicles situated in the basement level of the building



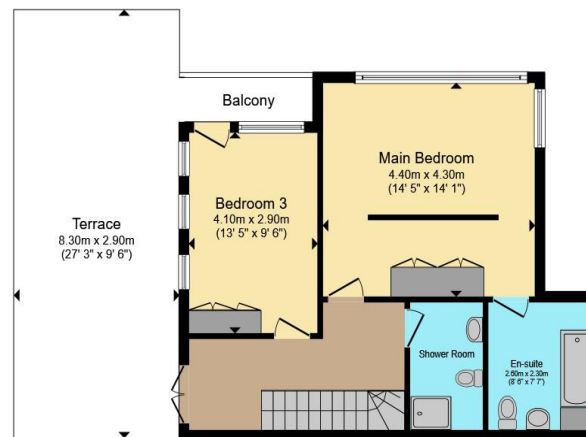


01291 630876

chepstow@peteralan.co.uk



Ground Floor



First Floor

Total floor area 141.4 m<sup>2</sup> (1,522 sq.ft.) approx

This floor plan is for illustrative purposes only. It is not drawn to scale. Any measurements, floor areas (including any total floor area), openings and orientation are approximate. No details are guaranteed, they cannot be relied upon for any purpose and they do not form part of any agreement. No liability is taken for any error, omission or misstatement. A party must rely upon its own inspection(s). Powered by [www.propertybox.io](http://www.propertybox.io)



## Important Information

Note while we endeavour to make our sales details accurate and reliable, if there is any point which is of particular interest to you, please contact the office and we will be pleased to confirm the position for you. We have not personally tested any apparatus, equipment, fixtures, fittings or services and cannot verify they are in working order or fit for their purposes. Nothing in these particulars is intended to indicate that carpets or curtains, furnishings or fittings, electrical goods (whether wired or not), Gas fires or light fittings or any other fixtures not expressly included form part of the property offered for sale. This computer generated Floorplan, if applicable, is intended as a general guide to the layout and design of the property. It is not to scale and should not be relied upon for dimensions. Tenure: We cannot confirm the tenure of the property as we have not had access to the legal documents. The buyer is advised to obtain verification from their solicitor or surveyor.

Peter Alan Limited is registered in England and Wales under company number 2073153, Registered Office is Cumbria House, 16-20 Hockliffe Street, Leighton Buzzard, Bedfordshire, LU7 1GN. VAT Registration Number is 500 2481 05. For activities relating to regulated mortgages and non-investment insurance contracts, Peter Alan Limited is an appointed representative of Connells Limited which is authorised and regulated by the Financial Conduct Authority. Connells Limited's Financial Services Register number is 302221. Most buy-to-let mortgages are not regulated.

