



**Yeoman Way, Bearsted, Maidstone, Kent, ME15 8PQ**

**Price £500,000**



Set along a beautiful tree-lined road in the highly sought-after area of Bearsted, this attractive detached chalet bungalow offers three generous double bedrooms, versatile living space, a spacious gated driveway, and a large private rear garden.

Upon entering the property, you are welcomed by a bright entrance porch leading into the hallway, where you will find two well-proportioned double bedrooms. To the rear of the home, the living accommodation has been thoughtfully arranged to create an excellent space for modern family living. The open-plan sitting and dining room flows seamlessly into the conservatory, allowing plenty of natural light throughout. The property also benefits from a well-appointed kitchen and a separate utility room for added convenience. Completing the ground floor is a spacious family bathroom featuring both a separate bath and shower.

Upstairs, the property offers a third double bedroom along with a useful additional W/C.

Externally, the home boasts a generously sized driveway to the front providing ample off-road parking. To the rear, there is a large patio area ideal for entertaining and enjoying the sunshine, leading onto an expansive West facing lawned garden with sheds providing additional storage space. Tenure: Freehold. Council Tax Band: E. EPC rating: D.



## LOCATION

The property is located next to the charming Len Valley and Mallard's Park, which offer an array of recreational facilities, including lovely walking trails. The vibrant village of Bearsted provides a wide range of amenities, such as outstanding schools, shops, pubs, restaurants, cafe's, a parish church, a doctors' surgery, and a London line station. Additionally, residents benefit from easy access to the M20 and M2 motorways, while the picturesque grounds of both Leeds Castle and Mote Park are just a short distance away.

## ACCOMMODATION

### GROUND FLOOR:

Porch

Sitting room/dining room

Kitchen

Utility room

Conservatory

Bedroom 1

Bedroom 2

Bathroom

### FIRST FLOOR:

Bedroom 3

W.C.

### EXTERNALLY:

Driveway

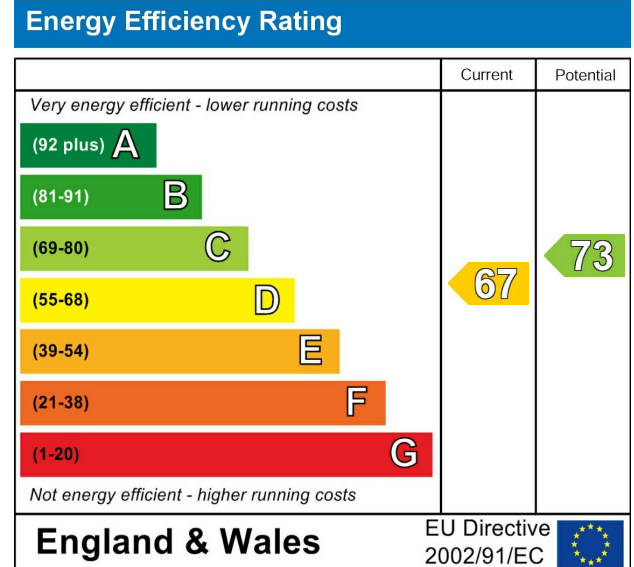
Rear garden

Summer house

Shed x2

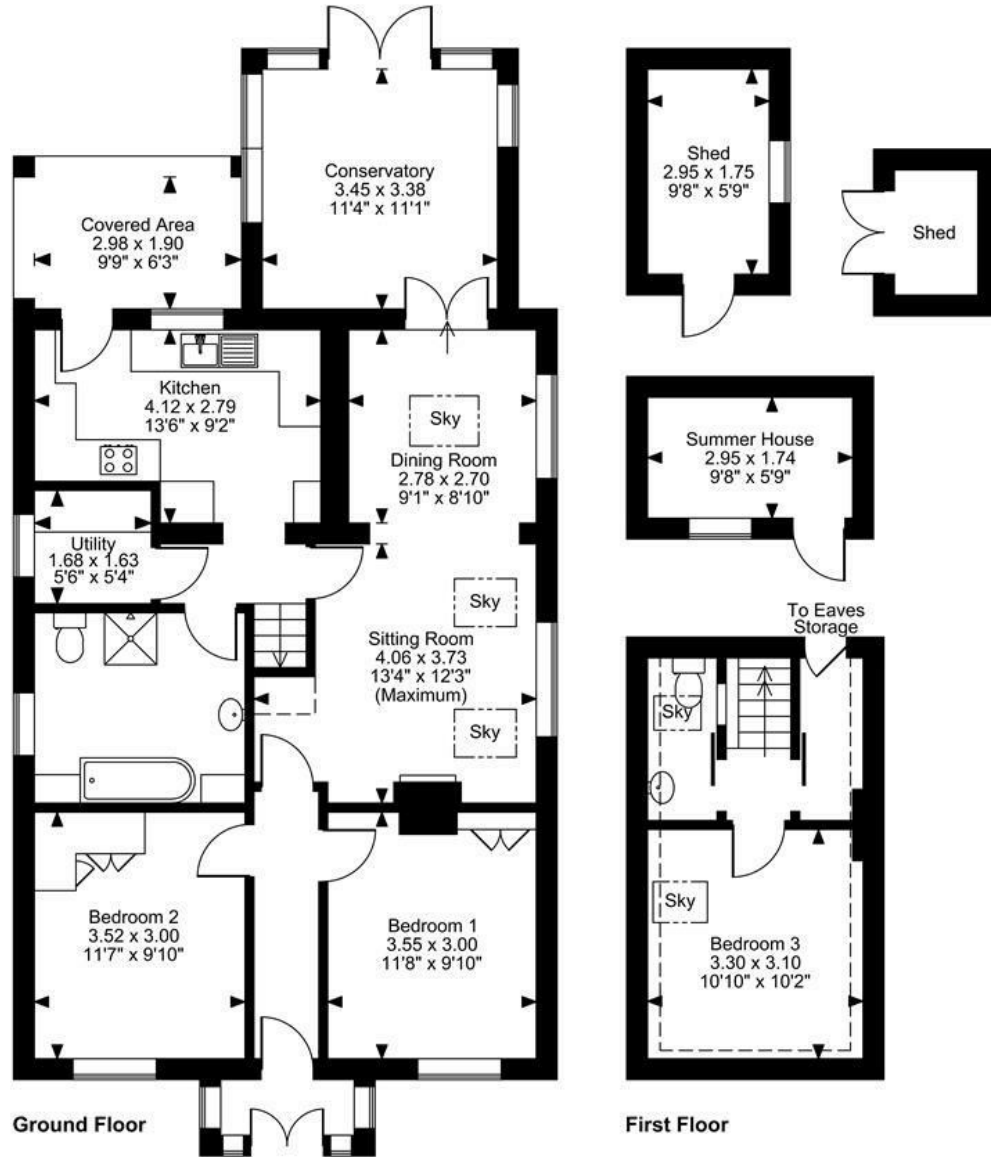
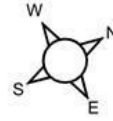
### VIEWINGS

Strictly by arrangement with the Agent's Bearsted Office, 132 Ashford Road, Bearsted, Maidstone, Kent ME14 4LX . Tel: 01622 739574.



Page & Wells limited for themselves and for the vendors of this property whose agents they are give notice that: 1. These particulars do not constitute any part of, an offer or a contract. 2. All statements contained in these particulars as to this property are made without responsibility on the part of Page & Wells Limited or the Vendor. 3. None of the statements contained in these particulars as to the property is to be relied on as statements or representations of fact. 4. Any intending purchaser must satisfy himself by inspection or otherwise as to the correctness of each of the statements contained in these particulars. 5. The vendor does not make or give, and neither Page & Wells Limited nor any person in their employment has any authority to make or give any representation whatsoever in relation to this property. These particulars are supplied on the understanding that all negotiations are carried out throughout Page & Wells Limited. Properties with a reference prefixes EAA are those which Page & Wells Limited disclose an interest in accordance with the provisions of the Estates Agents Act 1979

Yeoman Way, Bearsted, Maidstone  
 Approximate Gross Internal Area  
 Main House = 1141 Sq Ft/106 Sq M  
 Outbuildings = 134 Sq Ft/12 Sq M  
 Covered external area = 61 Sq Ft/6 Sq M  
 Total = 1275 Sq Ft/118 Sq M



**FOR ILLUSTRATIVE PURPOSES ONLY - NOT TO SCALE**

The position & size of doors, windows, appliances and other features are approximate only.

☐☐☐☐ Denotes restricted head height

© ehouse. Unauthorised reproduction prohibited. Drawing ref. dig/8691765/LCO