

A two-story terraced house with a light-colored, textured exterior. The house features a green front door with a small window and a brass handle. To the right of the door is a white-framed glass door leading to a side entrance. The house has several windows with white frames and curtains. A paved garden area with large stone tiles is in the foreground. A wooden fence runs along the left side of the garden. A black car is parked on the street to the left. The sky is blue with some clouds.

Castles

ASKING PRICE

£390,000

Hammond Road

Enfield, EN1 3PD



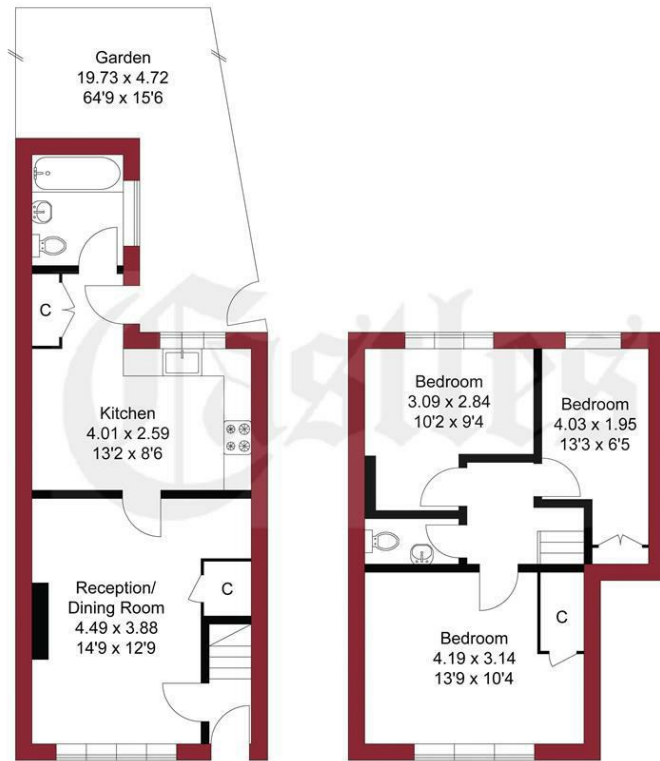
PROPERTY SUMMARY

A three bedroom tunnel-terraced family house located off Brick Lane in Enfield Highway close to The Hertford Road and local schools and less than 1m from Southbury and Brimsdown Train Stations (Serving London Liverpool Street). An internal viewing is recommended. Features include front off street parking, ground floor family bathroom, living room, kitchen / diner, 1st floor WC, 3 bedrooms, spacious rear garden, side tunnel access, double glazing and gas central heating.





APPROXIMATE GROSS INTERNAL AREA
68.56 sqm / 737.97 sqft



THIS PLAN IS FOR ILLUSTRATION ONLY AND MAY NOT BE
REPRESENTATIVE OF THE PROPERTY

A guide to the area

AREA GUIDE TEXT



House - Terraced

Freehold

Council:

Council Tax Band: C

Lease Remaining: n/a

Service Charge: n/a

Ground Rent: n/a

Agents Note: Whilst every care has been taken to prepare these particulars, they are for guidance purposes only. All measurements are approximate and are for general guidance purposes only and whilst every care has been taken to ensure their accuracy, they should not be relied upon and potential buyers/tenants are advised to recheck the measurements



OFFICE ADDRESS

243 - 245 Hertford Road
Enfield
London
EN3 5JJ

OFFICE DETAILS

0208 804 8000
enfield@castles.london
<https://www.castles.london>

Energy Efficiency Rating		Current	Potential
Very energy efficient - lower running costs			
A	(92-101)		
B	(81-91)		
C	(69-80)		
D	(55-68)		
E	(39-54)		
F	(21-38)		
G	(1-20)		
Not energy efficient - higher running costs			
England & Wales			
EU Directive 2002/91/EC			