



Burtswater Cottage Shillingstone
, Blandford Forum, DT11 0SQ

Offers over £450,000



Burtswater Cottage

Blandford Forum, DT11 0SQ

BEAUTIFULLY MODERNISED PERIOD COTTAGE WITH STUNNING COUNTRYSIDE VIEWS – OPEN DAY FRIDAY 10th JULY - FROM 4.30 PM - VIEWINGS STRICTLY BY APPOINTMENT - PLEASE CALL TO ARRANGE

Having recently undergone an extensive programme of refurbishment and modernisation, Burtswater Cottage now offers the perfect blend of period charm and contemporary living.

Occupying an enviable position on the edge of the sought-after village of Shillingstone, within the beautiful North Dorset countryside, this delightful semi-detached cottage enjoys far-reaching rural views whilst offering stylish, turnkey accommodation throughout.

The centrepiece of the home is the new impressive open-plan kitchen, breakfast room and snug, created by combining the former kitchen and dining room into one superb family living space. The kitchen has been thoughtfully designed with a comprehensive range of built-in appliances, generous work surfaces and an attractive central island, making it ideal for both everyday family life and entertaining.

To the rear, the conservatory enjoys uninterrupted views across the surrounding countryside and provides an excellent additional reception room, complemented by a convenient ground floor cloakroom.

The separate sitting room is full of character and enjoys delightful views across the beautifully remodelled rear gardens, creating a peaceful setting in which to relax.

The first floor has been finished to an exceptional standard, with newly fitted bathrooms including a stylish en-suite shower room to the principal bedroom. The property has been fully redecorated throughout and benefits from new floor coverings, allowing the next owner to simply move straight in.

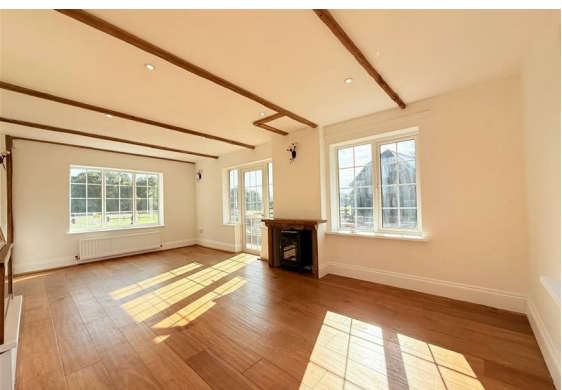




Outside, the garden has been thoughtfully redesigned to complement the property, while the substantial detached barn/garage offers excellent storage, workshop space or exciting potential for conversion to a home office, annexe, studio or holiday accommodation, subject to the necessary planning consents. Further useful outbuildings provide additional flexibility.

This is a rare opportunity to purchase a beautifully renovated country cottage in an outstanding rural setting, combining character, modern living and future potential.

Early viewing is highly recommended.



Viewing

Please contact our StQ Property Group Office on 0120287723 if you wish to arrange a viewing appointment for this property or require further information.



Total area: approx. 188.6 sq. metres (2029.9 sq. feet)

What every agent has been made to ensure the accuracy of the floor plan, measurements of doors, windows, rooms and any other items are approximate and no responsibility is taken for omissions or inaccuracy. The plan is for illustrative purposes only and should be used as a guide only. Please contact the agent for more information. The services systems and appliances shown have not been tested and guaranteed as to their operation or condition. Please contact the agent for more information. Plans produced using PlanUp.



Area Map

Energy Efficiency Rating	
Potential	94
Current	69
England & Wales EU Directive 2002/91/EC	
Very energy efficient - lower running costs	A (92 plus)
	B (81-91)
	C (69-80)
	D (55-68)
	E (39-54)
	F (21-38)
Not energy efficient - higher running costs	G (1-20)

These particulars, whilst believed to be accurate are set out as a general outline only for guidance and do not constitute any part of an offer or contract. Intending purchasers should not rely on them as statements of representation of fact, but must satisfy themselves by inspection or otherwise as to their accuracy. No person in this firm's employment has the authority to make or give any representation or warranty in respect of the property.