



RESIDE

MANCHESTER



Ardwick Green 10 Niven Street
Ardwick, Manchester, M12 6PQ

Asking Price £399,950



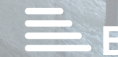
3



2



1



B

Ardwick Green 10 Niven Street

Ardwick, Manchester, M12 6PQ

Sustainable Urban Living at Ardwick Green.

Located a few hundred metres from Piccadilly Station and overlooking the historic Ardwick Green, the latest development by Step Places comprises of 16 three-bedroom townhouses.

This former show home is now available for sale and immediate occupation. It has the upgraded specification pack included, along with flooring / carpeting throughout and built in wardrobes (furniture is not included).

Nestled among listed period properties, these houses will offer superb specification and sustainable living with Manchester's thriving City centre on your doorstep.

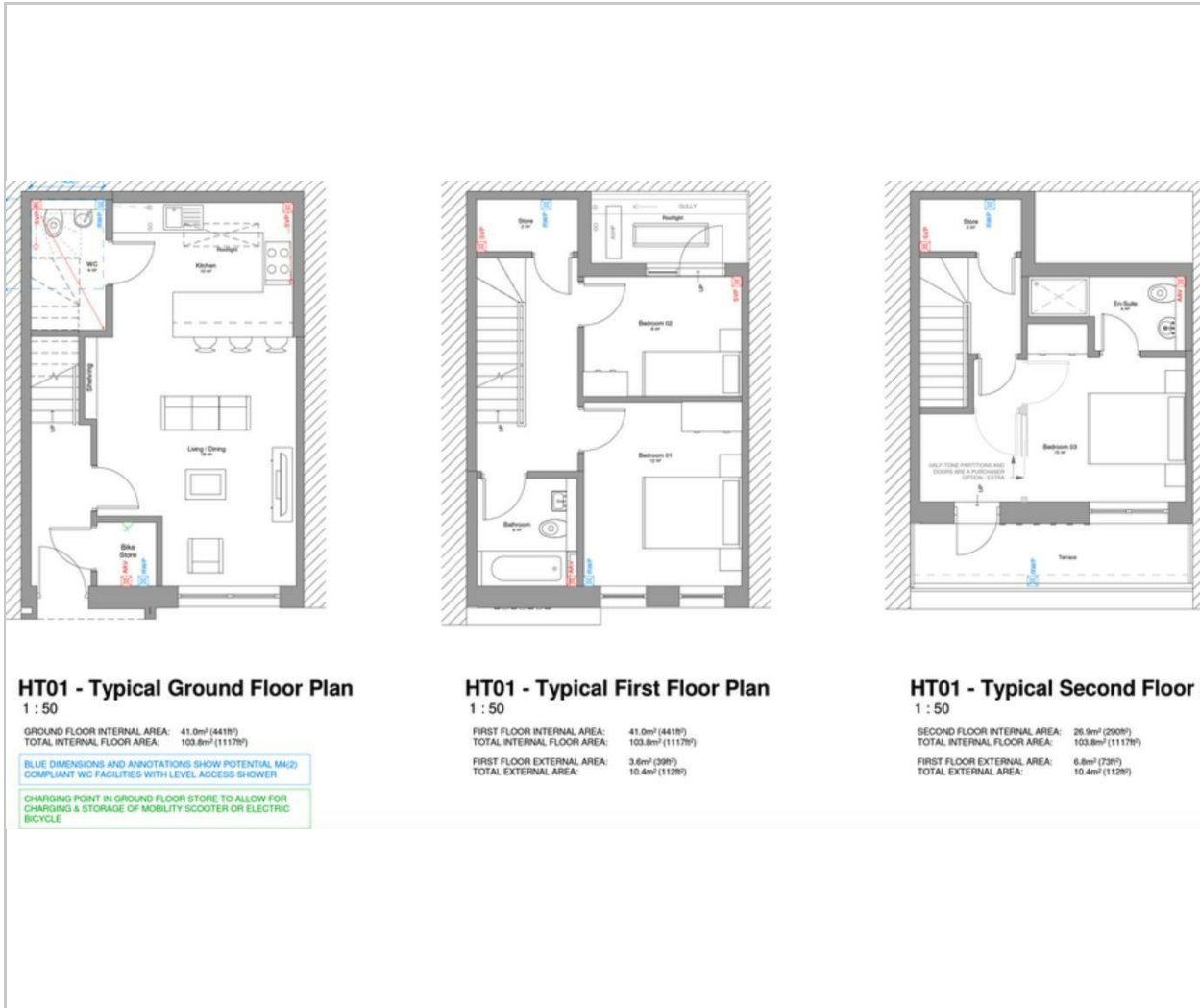
Ardwick Green combines contemporary design with great light infused spaces, offering stylish homes with a modern twist, private parking (EV point), outdoor space and a welcoming community atmosphere.

- Brand new development
- Three bedroom 3 storey townhouse
- Balcony and terrace
- On site car parking & EV point
- 1117 sqft internally
- Two bathrooms
- Former Show Home Now For Sale
- Located on Ardwick Green
- Sustainable Houses
- EPC rating B

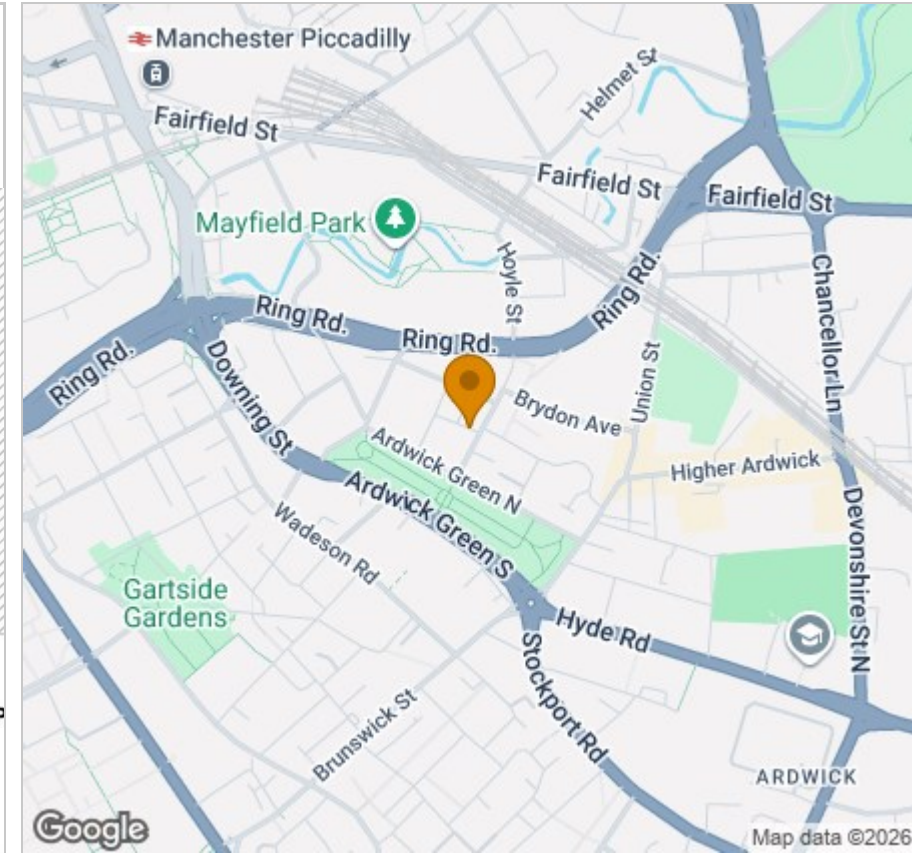




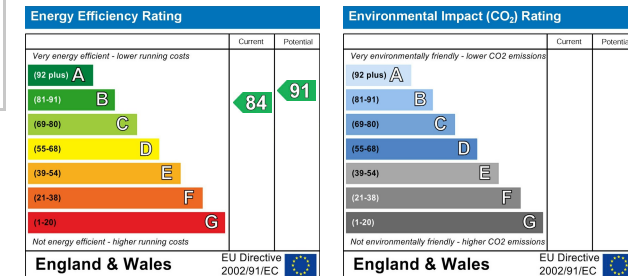
Floor Plan



Area Map



Energy Efficiency Graph



Viewing

Please contact our Reside Manchester Office on 0161 837 2840 if you wish to arrange a viewing appointment for this property or require further information.

These particulars, whilst believed to be accurate are set out as a general outline only for guidance and do not constitute any part of an offer or contract. Intending purchasers should not rely on them as statements of representation of fact, but must satisfy themselves by inspection or otherwise as to their accuracy. No person in this firm's employment has the authority to make or give any representation or warranty in respect of the property.