



Redfield Lane
Earls Court, SW5

CHESTERTONS





A beautifully presented duplex apartment with an impressive loft-style interior, arranged over the second and third floors of an attractive period building.

The impressive double-height reception room is flooded with natural light from large sash windows and features bespoke fitted cabinetry, wide plank oak flooring and a contemporary open-plan kitchen, creating an exceptional space for both everyday living and entertaining. A guest cloakroom completes the entrance floor.

The upper floor provides a generous principal bedroom with fitted wardrobes and en-suite bathroom, a second double bedroom to the rear, and a stylish family bathroom.

Further benefits include a secure garage space for one car, an increasingly rare and valuable feature in this location.

Redfield Lane is a charming cobbled street tucked away within the sought-after Kenway Village, moments from the excellent shops, cafés and restaurants of Old Brompton Road. The property is ideally positioned for the transport links of Earl's Court, Gloucester Road and West Brompton stations, providing access to the District, Circle, Piccadilly and London Overground lines.

- Beautifully presented duplex apartment with an impressive loft-style interior
- Stunning double-height reception room with bespoke open-plan kitchen and excellent natural light
- Two double bedrooms, two bathrooms, guest cloakroom
- Secure garage space for one car in the heart of Kenway Village

Asking Price £1,350,000

Score	Energy rating	Current	Potential
92+	A		
81-91	B	82 B	82 B
69-80	C		
55-68	D		
39-54	E		
21-38	F		
1-20	G		

Tenure: Share of Freehold, 985 years

Service Charge: £5400+ annual sinking fund contribution

Ground Rent: Peppercorn

Local Authority: Royal Borough of Kensington & Chelsea

Council Tax Band: G

Chestertons South Kensington Sales

44-48 Old Brompton Road

London

SW7 3DY

southkensington@chestertons.co.uk

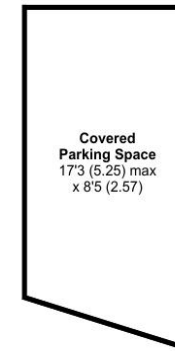
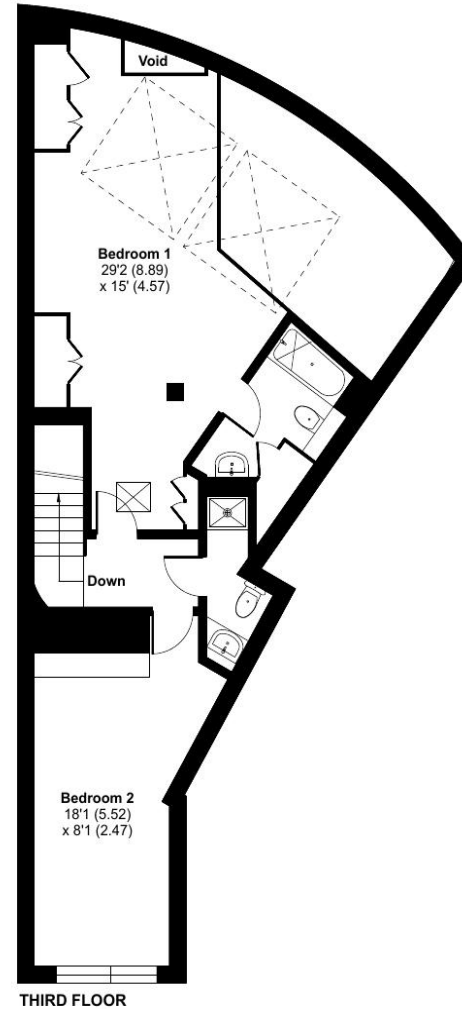
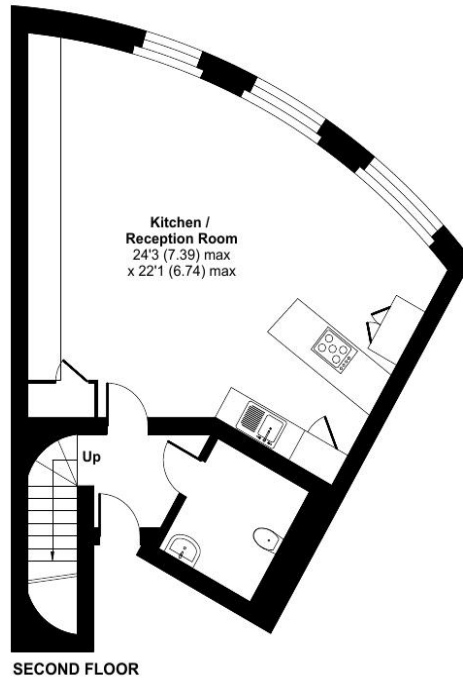
020 7589 1234

chestertons.co.uk

Redfield Lane, London, SW5

Approximate Area = 1222 sq ft / 113.5 sq m (excludes void)

For identification only - Not to scale



 Floor plan produced in accordance with RICS Property Measurement 2nd Edition, Incorporating International Property Measurement Standards (IPMS2 Residential). © nitchecom 2026. Produced for Chestertons. REF: 1481939

Chesterton UK Services Limited trading as Chestertons for themselves and for the vendor of this property whose agents they are, give notice that (i) these particulars do not constitute any part of an offer or contract, (ii) all statements contained within these particulars are made without responsibility on the part of Chestertons or the vendor, (iii) whilst made in good faith, none of the statements contained within these particulars are to be relied upon as a statement or representation of fact, (iv) any intending purchasers must satisfy themselves by inspection or otherwise as to the correctness of each of the statements contained within these particulars, (v) the vendor does not make or give either Chestertons or any person in their employment any authority to make or give representation or warranty whatsoever in relation to this property. Wide angle lenses may be used. ©Copyright Chestertons | Chesterton UK Services Limited | Registered Office 5th Floor, The Lantern, 75 Hampstead Road, London, NW1 2PL Registered Company Number 05334580.

