



Albion Street, SE16

£1,800 Per calendar month

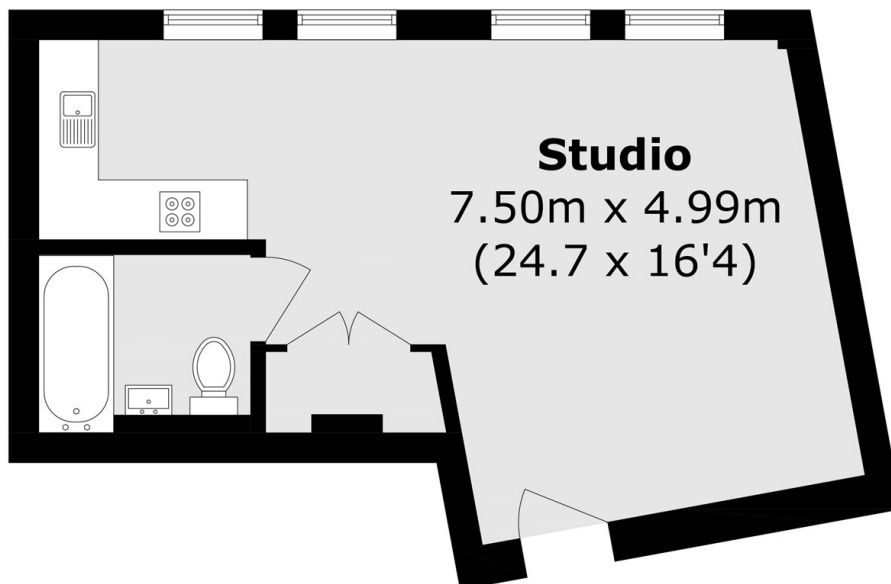
A studio apartment on the second floor of a modern block. The property has an open plan living space with a fully fitted kitchen including a dishwasher. A large utility cupboard offers storage and houses a washing machine and the bathroom has a three piece suite.

Features

- Studio
- Wood Floors
- Brand New Development
- Balcony
- Canada Water
- Rotherhithe

Built in 2025, The Albion is a five minute walk to Canada Water Station for direct access to the Jubilee and Windrush Lines. Canada Water also offers cafes, restaurants, bars and other local amenities.

**Albion Street,
London, SE16**



Total area (approx.): 34.1 sq. m (367.0 sq. ft)