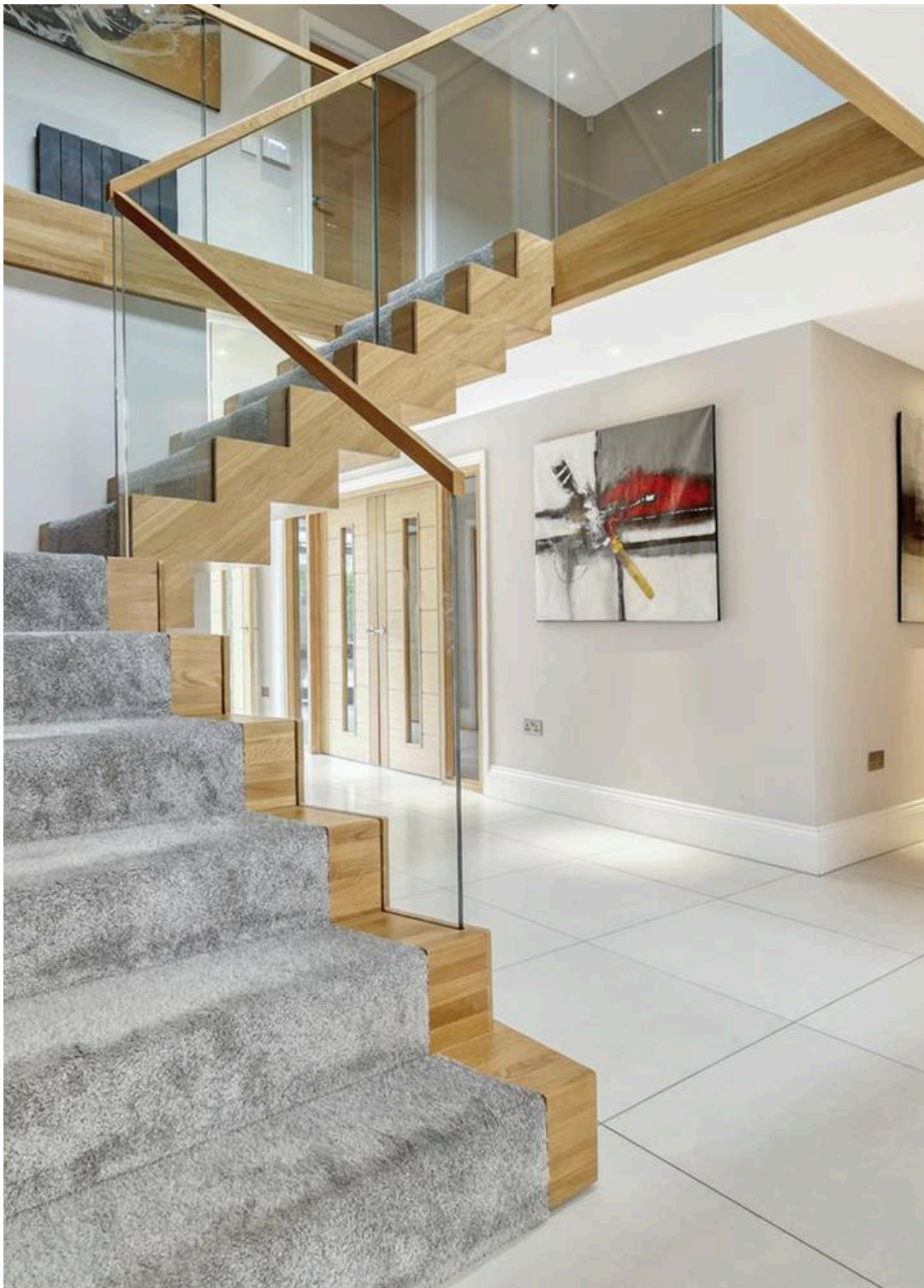




**Walkers**  
People & Property

Brockley Grove, Hutton. CM13 2JJ

Guide Price £2,750,000 - £2,850,000



## Ramblers Lodge Brockley Grove

Hutton. CM13 2JJ

Guide Price - £2,750,000 - £2,850,000

This outstanding detached family home of approaching 6,000 sq ft is set within the prestigious Hutton Mount estate, recently constructed and finished to an exceptional standard, offering the perfect fusion of contemporary style, cutting-edge technology, and supreme comfort.

The property showcases expansive, light-filled interiors with high ceilings, premium materials, and meticulous attention to detail. Smart home features and air conditioning to all principal rooms ensures seamless day-to-day living with total sophistication.

Set behind a double-gated, in-and-out carriage driveway, Ramblers Lodge offers privacy and presence, with ample secure off-street parking.

Ideally located just 0.6 miles from Shenfield Mainline Station and the Broadway's shops, cafes, and amenities, the property also sits within the catchment area for highly regarded local & private schools, including Brentwood, Chelmsford Grammar schools & St Martins.

A rare opportunity to secure an ultra-luxurious, move-in ready family home in a prime location.

### **Anti-Money Laundering Checks and Legal Support:**

A mandatory Anti-Money Laundering (AML) check is required on all buyers and sellers and is facilitated via our legal partner at a cost of £65 per property payable upon instruction. The service also provides access to an unlimited legal advice helpline staffed by qualified solicitors to assist with any questions you may have during your moving journey, and Mover Protection which is designed to help recoup certain costs if your sale or purchase falls through through no fault of your own (terms and limits apply).

# Brockley Grove

Hutton, CM13 2JJ

Guide Price £2,750,000 - £2,850,000. This outstanding detached family home of approaching 6,000 sq ft is set within the prestigious Hutton Mount estate.

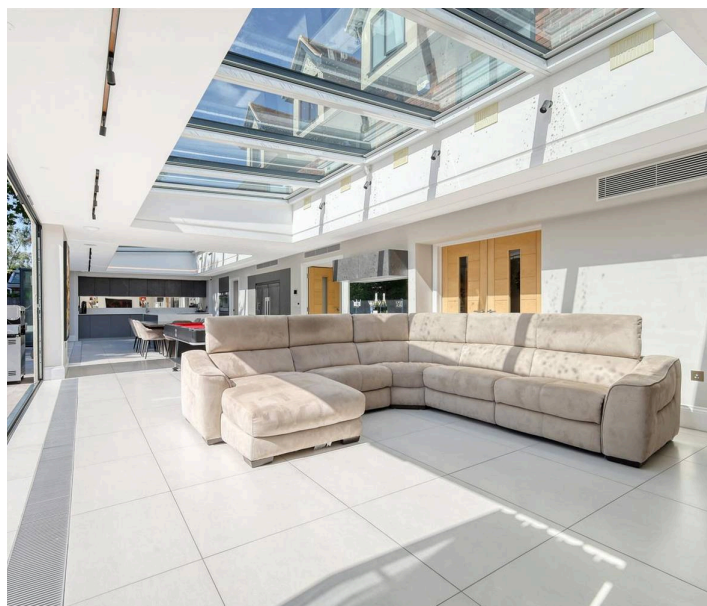
Council Tax band: H

Tenure: Freehold

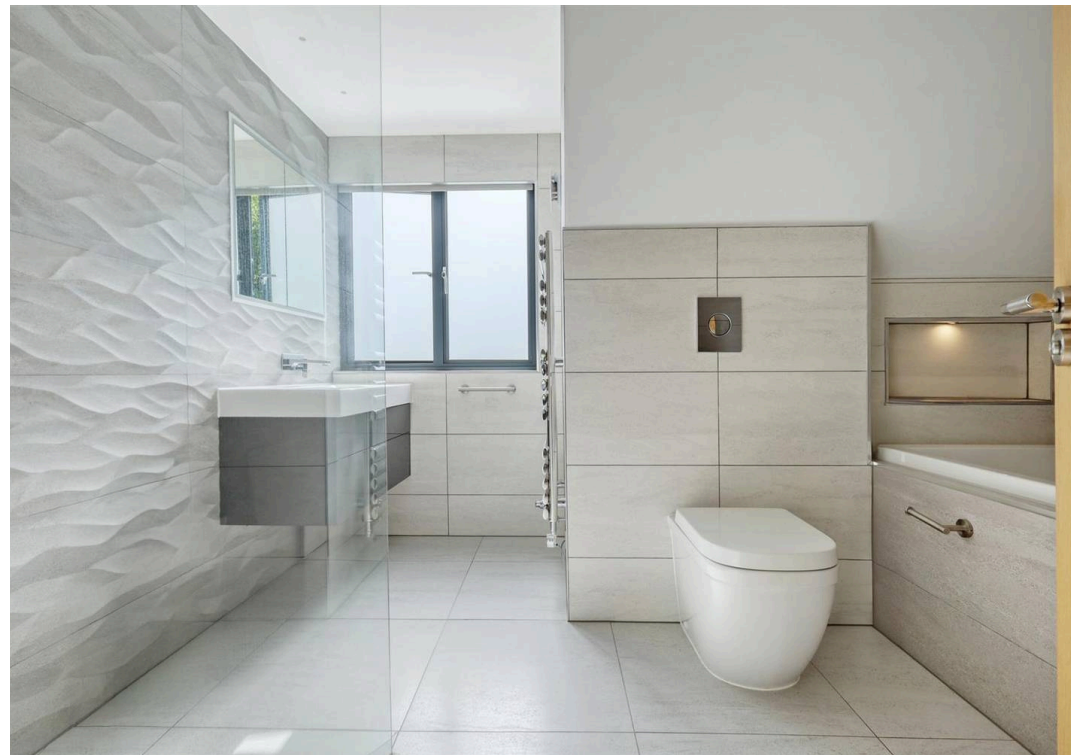
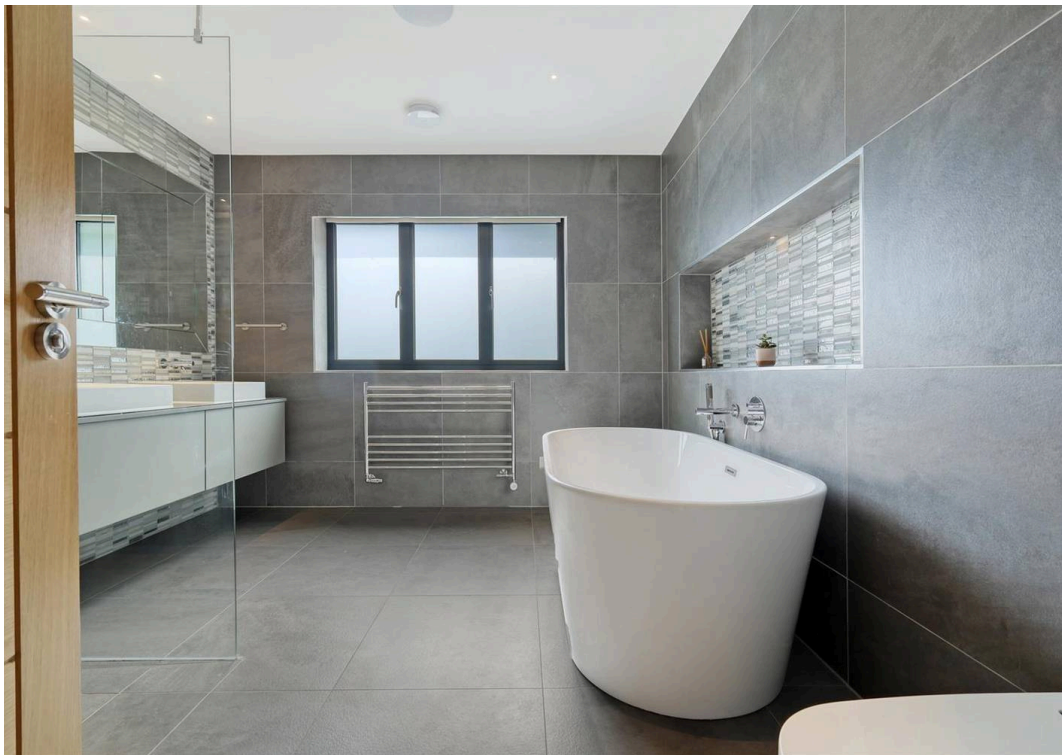
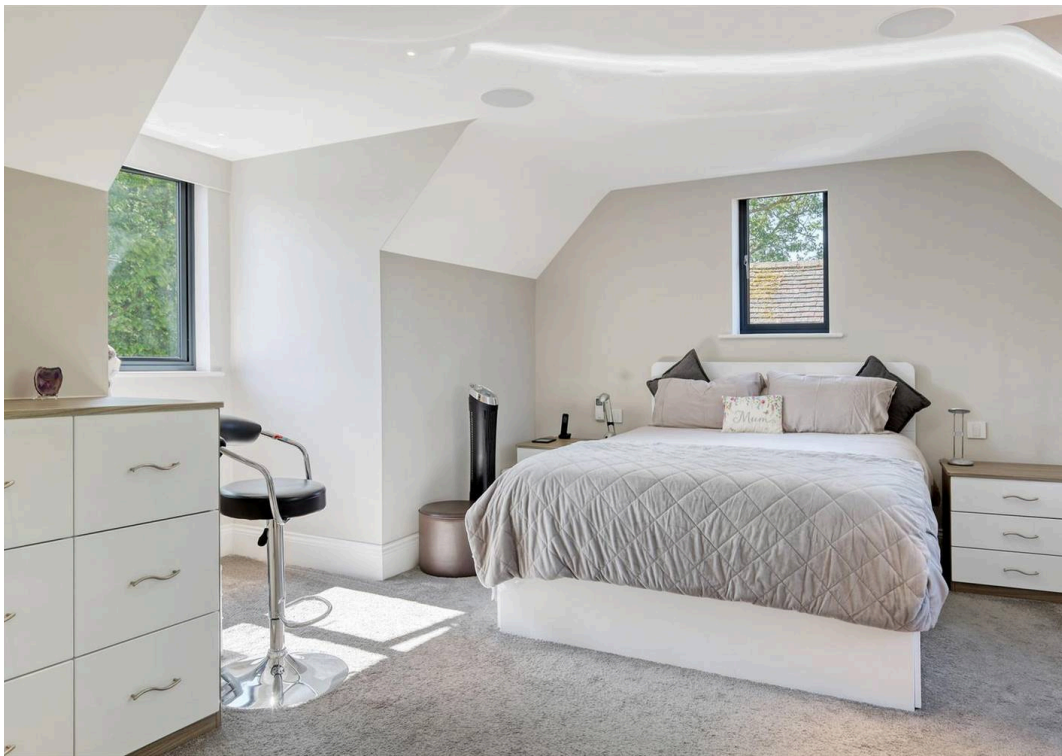
EPC Energy Efficiency Rating: C

EPC Environmental Impact Rating: D

- Prestigious Hutton Mount estate location, just 0.6 miles from Shenfield Station
- Substantial detached home of approaching 6,000 sq ft
- Recently finished to an exceptional standard
- Smart home features and air conditioning to principal rooms
- Impressive double-gated carriage driveway with ample secure parking
- Within catchment for highly regarded local & private schools









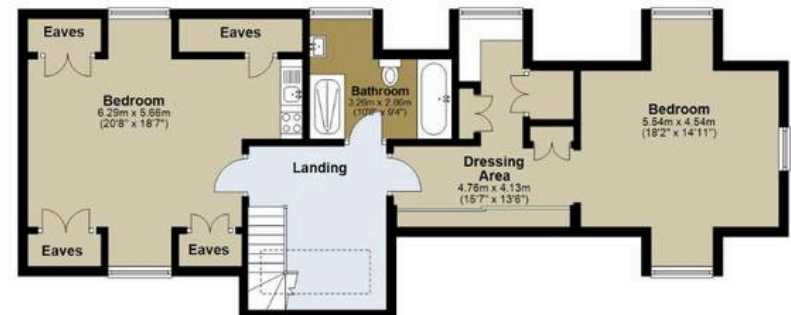
**Ground Floor**  
Approx. 304.2 sq metres (3274.2 sq feet)



**First Floor**  
Approx. 165.4 sq metres (1780.1 sq feet)



**Second Floor**  
Approx. 87.2 sq metres (938.4 sq feet)



Measurements are approximate and for illustration purposes only. While we do not doubt the accuracy and completeness, we advise you conduct a careful independent assessment of the property to determine monetary value.

## Psst... Have you heard of

## Walkers discreet marketing?

Many people lose out on their dream home to someone in a better position.

Often, it is because they have delayed putting their house on the market, preferring to find somewhere first and then sell,

That is why we have innovated a totally unique and highly confidential moving home solution to put you in a competitive position.

Let us find you a buyer **without any advertising or pressure** and without the neighbours knowing.

Your secret is safe with us....

## Get in touch for a complimentary valuation.

Looking To Sell Or Let Your Home?

Book your free valuation to see how much your home is worth.

Contact Us  
01277 355005



Our Website

[www.walkersstates.co.uk](http://www.walkersstates.co.uk)



Our Address

90 High Street  
Ingatstone  
CM4 9DW



[www.walkersstates.co.uk](http://www.walkersstates.co.uk)

## About Us

Walkers | People & Property is built on a lifelong family passion for homes. Martin, Gillian and Adam Walker lead a respected, professional team who live and breathe all aspects of property. With over 30 years of experience, we understand the moving process on a personal level and are committed to delivering exceptional results. Most of all, helping people move is our hobby, and handing over the keys to excited buyers remains our favourite moment.

## Get In Touch



## Browse Properties

